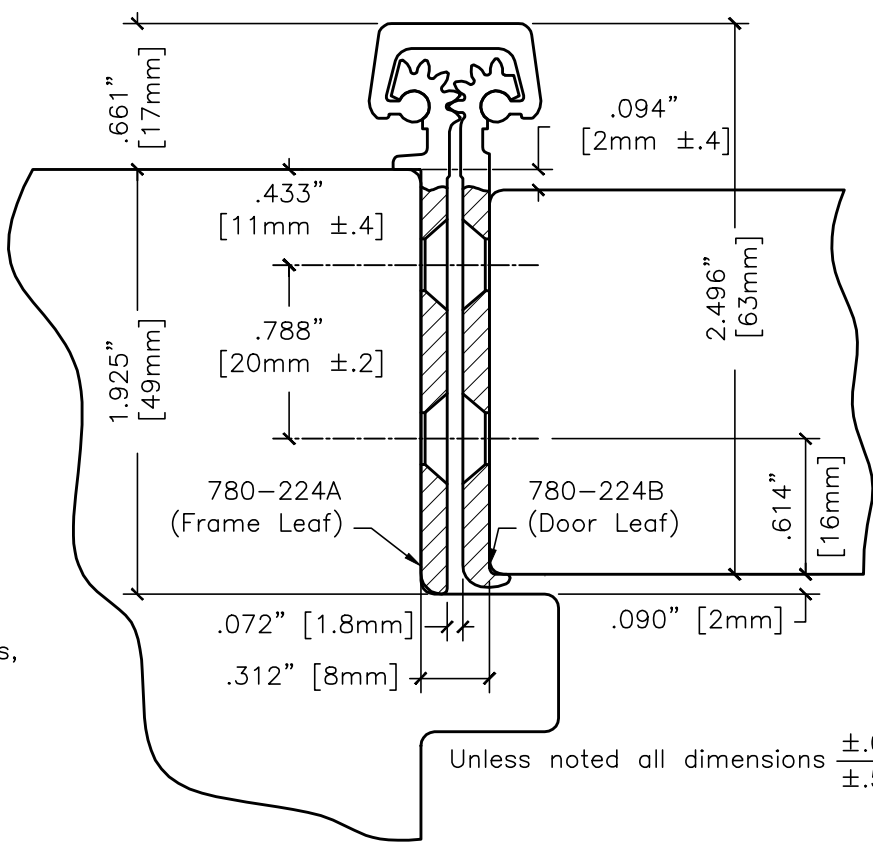
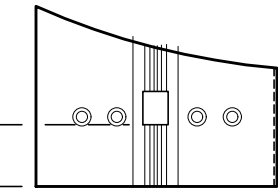


#12 x 82° F.H. countersunk wood or machine screws, (38 places).

A

32 bearings spaced equally @ 2.563" center to center.

1.402" [35.6mm] Ref.  
End of hinge to first bearing, both ends.



### Vertical Hole Spacing

Non cumulative tolerances on hole to hole spacing.

	Metric (mm)	Decimal (in.)
A	2108.0 <sup>+0.00</sup> / <sub>-0.80</sub>	82.992 <sup>+0.000</sup> / <sub>-0.030</sub>
B	40.0 ±.25	1.575 ±.010
C	85.0 ±.20	3.346 ±.008
D	130.0 ±.20	5.118 ±.008
E	200.0 ±.20	7.874 ±.008
F	257.0 ±.20	10.118 ±.008

The illustration and technical description in this cut sheet is current as of the date in version date on the right. Cal-Royal Product reserves the right to, and may, on occasions, make changes and/or improvements in designs and dimensions without prior notice.

6605 Flotilla Street  
City of Commerce  
CA 90040 USA  
Tel# (323) 888-6601  
FAX # (323) 888-6699  
WEB SITE:  
CAL-ROYAL.COM  
Email: sales@cal-royal.com

ITEM NO.	DESCRIPTION
CRHD782240	CONCEALED SURFACE 83" HEAVY DUTY CONTINUOUS GEARED HINGE

NOT TO SCALE	UNIT	Prepared By:	DATE	DWG. NO.
PAGE 1 of 1	PRIMARY DIMENSION SHOWN IN INCHES, DIMENSIONS IN ( ) ARE MM	BBT / ADG AED/ CVL	10/27/2023	HGT-3036-10/23-1of1
				Ver. 1.0 Rev.