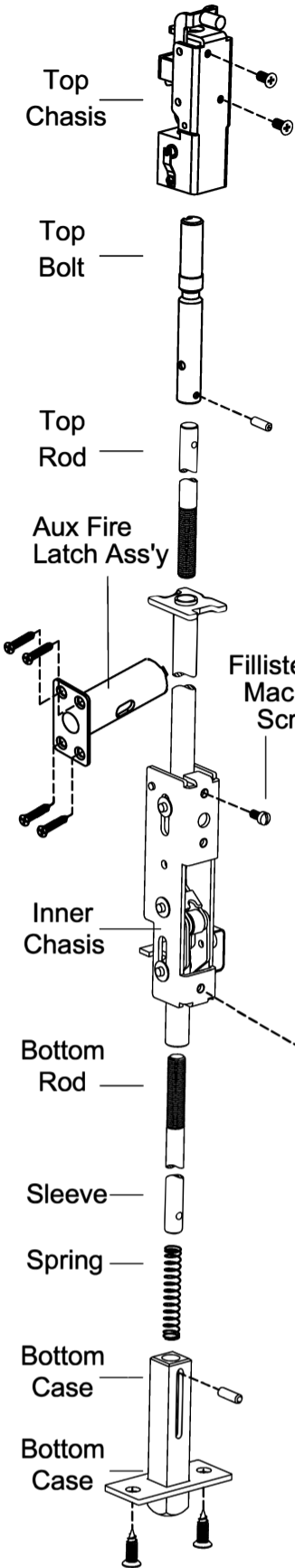
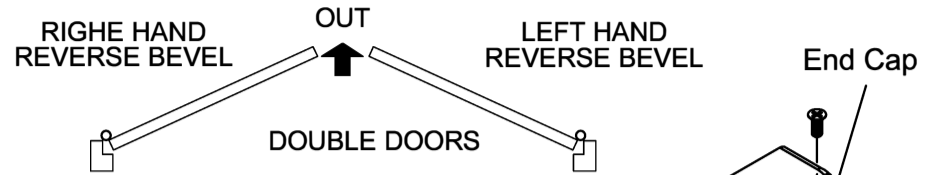


INSTRUCTIONS FOR INSTALLING FMCVR7700x120 CONCEALED VERTICAL ROD FIRE EXIT DEVICE FOR METAL DOOR

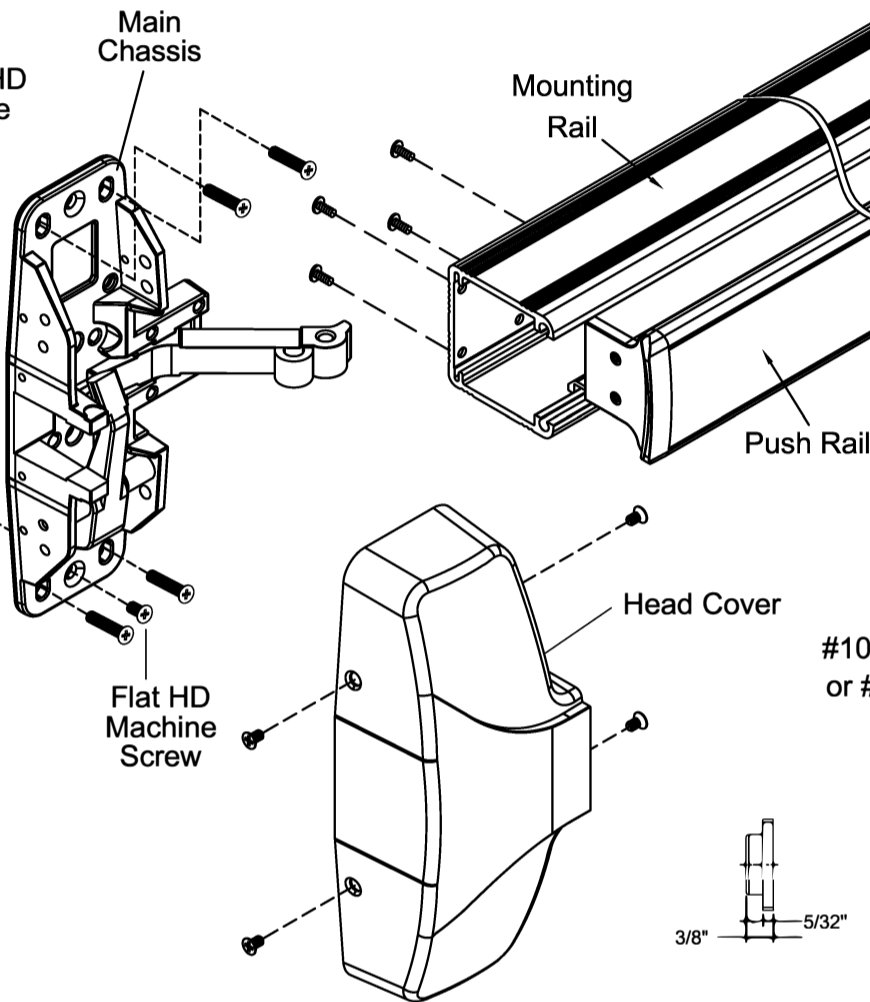


- Available stock length
- For 32" doors, Device can be cut to fit doors down to 24" wide
 - For 36" doors, Device can be cut to fit doors down to 32" wide
 - For 48" doors, Device can be cut to fit doors down to 36" wide

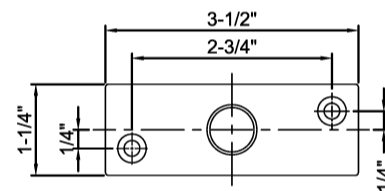
THIS EXIT DEVICE IS HANDED
CHECK HAND OF DEVICE AGAINST APPLICATION



Door Surface must be flush to allow Exit Device rest on flat surface of the door



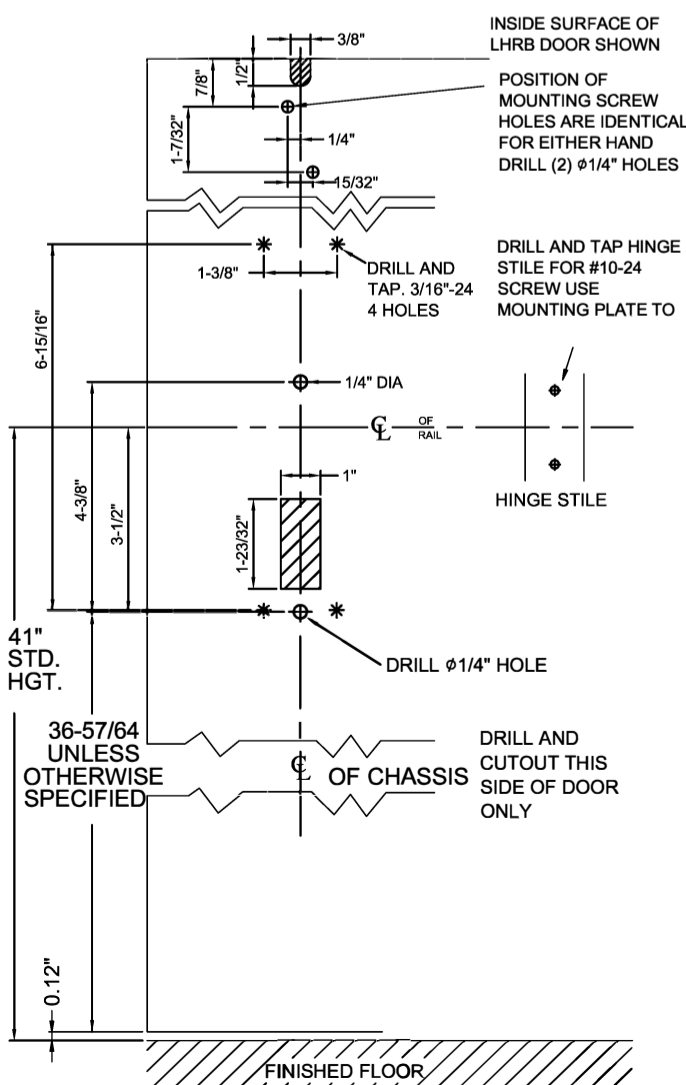
#10-24 FL HD Machine screws
or #10x1" FL HD wood screws



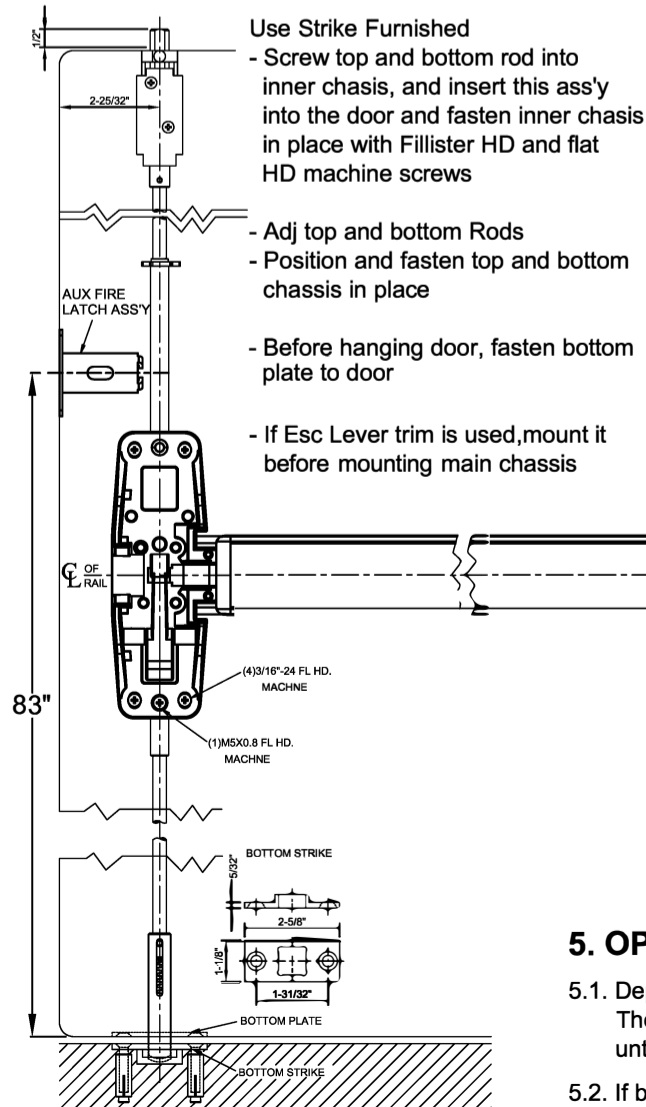
TOP STRIKE

If Esc Lever trim is used,
See Instruction sheet
packed with the trim

1. PREPARE DOOR

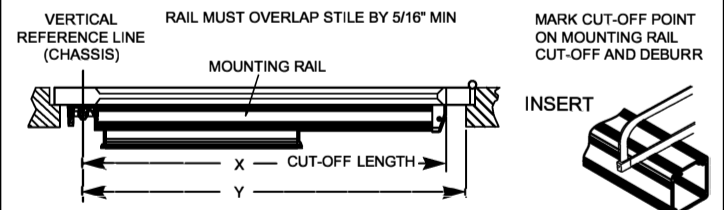


2. MOUNT ROD & CHASSIS



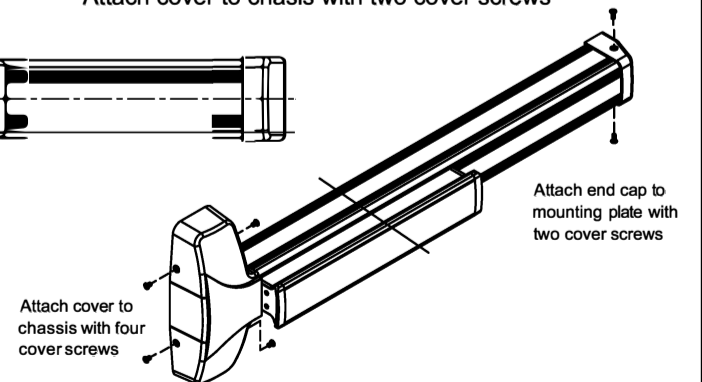
3. MOUNT RAIL ASS'Y

- 3.1. Determine cut-off dimension "X" by subtracting 1-1/8" from dimension "Y"
- 3.2. Depress arm into rail opening and slide rail onto chassis dimension "Y"



4. ATTACH COVER

- Attach cover to chassis with two cover screws



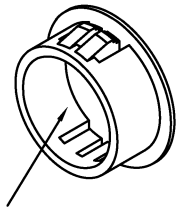
5. OPERATION CHECK

- 5.1. Depress Push rail, bolt should retract into door. The latch retractor button should pop out and hold the bolt retracted until button is depressed
- 5.2. If button does not pop out, remove top chassis and screw the top rod in one turn. Replace top chassis and repeat above operation

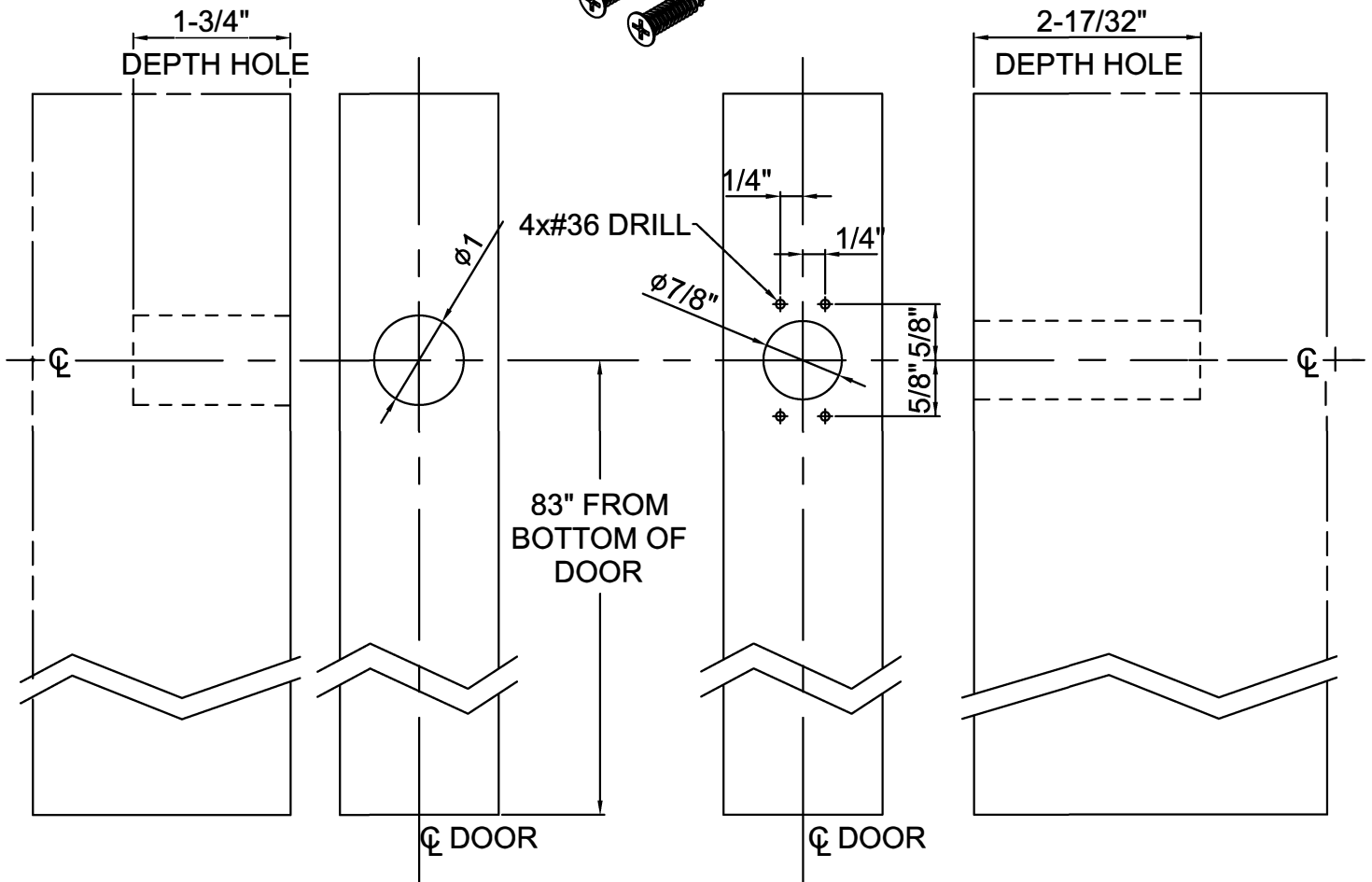
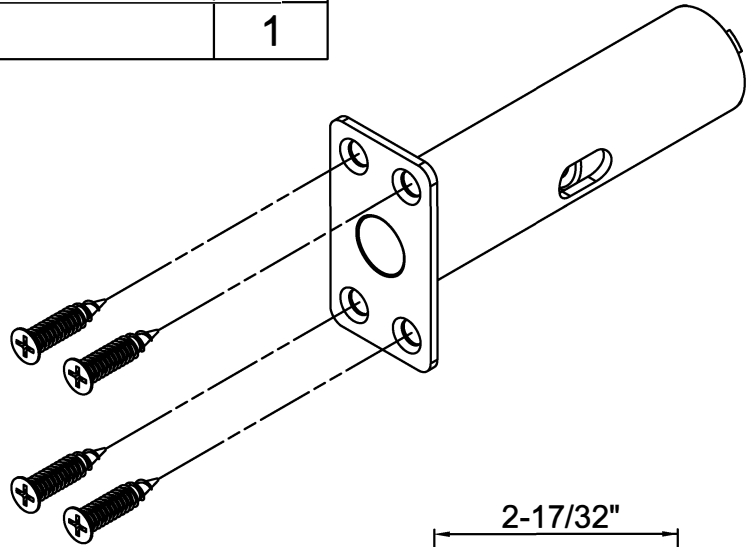
TEMPLATE

AUX FIRE LATCH ASSEMBLY FMCVR9800, FWCVR9800, FMCVR7700, FWCVR7700 Fire Vertical Rod Device for 120" Door

DESCRIPTION	QTY.
AUXILIARY FIRE LATCH ASSEMBLY	1
#6X3/6" TYPE AB FLAT HEAD SCREW	4
STRIKE HOLE PLUG	1



STRIKE HOLE PLUG



STRIKE HOLE PLUG
DOOR LEAF

AUXILIARY FIRE
LATCH ASSEMBLY
DOOR LEAF