

CAL-ROYAL

PRODUCTS, INC
COMMERCE, CALIFORNIA

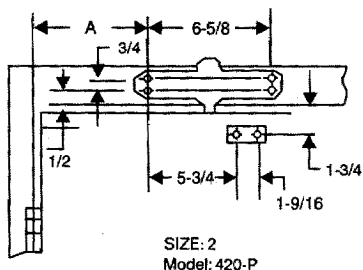
Model: 400 Series

Size: 2,3,4,

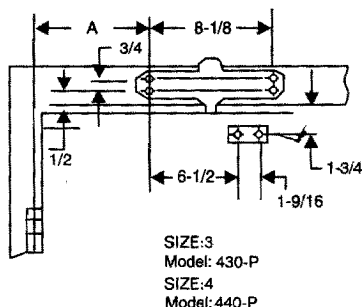
Non Hold-Open

Installation Instructions for TOP JAMB(PUSH SIDE) Mounting

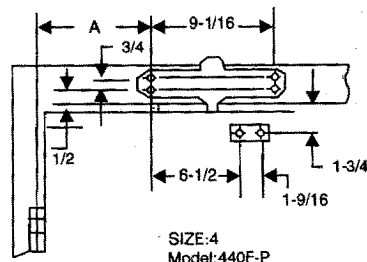
THIS TEMPLATE COVERS REGULAR ARM INSTALLATIONS TO 180° OPENINGS.



SIZE: 2
Model: 420-P



SIZE: 3
Model: 430-P
SIZE: 4
Model: 440-P



SIZE: 4
Model: 440F-P

- Left hand door shown
- Right hand door opposite
- Dimensions are in inches
- Drawing not to scale

OPENING	DIM.A 420-P	DIM.A 430-P 440-P	DIM.A 440F-P
TO-120°	3-3/4	4-23/32	4-23/32
120°-180°	2-9/16	3-5/32	3-5/32

INSTALLATION INSTRUCTIONS

1. Select door opening angle and use dimensions shown above. mark four (4) holes on frame for door closer and two (2) holes on door for arm shoe.
2. Drill pilot holes in door and frame for # 14 all-purpose screws or drill and tap for 1/4-20 machine screws.
3. Install forearm/arm shoe assembly to frame using screws provided.
4. Mount closer on door using screws provided SPEED ADJUSTING VALVE MUST BE POSITIONED TOWARD HINGE EDGE
5. Install main arm to top pinion shaft, perpendicular to door as shown below. Secure tightly with arm screw/washer assembly provided.
6. Adjust length of forearm so that forearm is perpendicular to frame when preloaded main arm (illustration below). Secure forearm to main arm with screw/washer assembly provided.
7. Snap pinion cap over shaft at bottom of closer.
8. Adjust closing speed of door, following instructions as shown page 1.

