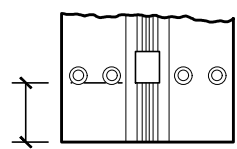


#12 x 82° F.H. countersunk wood or machine screw (38 places).

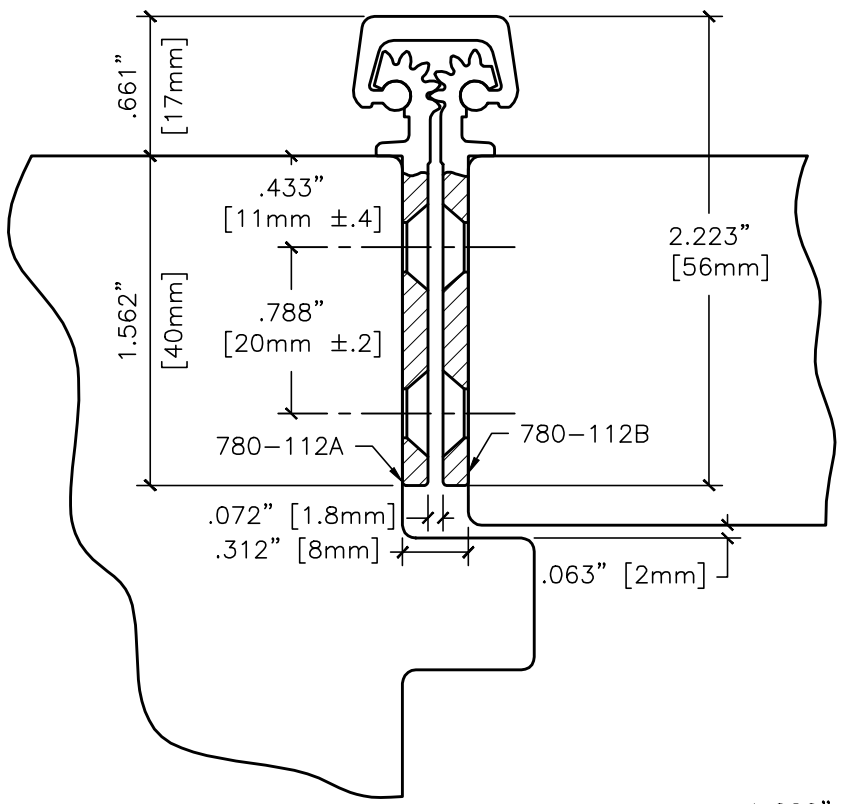


32 bearings spaced equally @ 2.563" center to center.



1.402" [35.6mm] Ref.

End Of Hinge To First Bearing, Both Ends.



Unless noted all dimensions $\frac{\pm.020''}{\pm.5mm}$

Vertical Hole Spacing

Non cumulative tolerances on hole to hole spacing.

	Metric (mm)	Decimal (in.)
A	2108.0 $\begin{smallmatrix} +0.00 \\ -0.80 \end{smallmatrix}$	82.992 $\begin{smallmatrix} +0.000 \\ -0.030 \end{smallmatrix}$
B	40.0 $\pm.25$	1.575 $\pm.010$
C	85.0 $\pm.20$	3.346 $\pm.008$
D	130.0 $\pm.20$	5.118 $\pm.008$
E	200.0 $\pm.20$	7.874 $\pm.008$
F	257.0 $\pm.20$	10.118 $\pm.008$

The illustration and technical description in this cut sheet is current as of the date in version date on the right.

Cal-Royal Product reserves the right to, and may, on occasions, make changes and/or improvements in designs and dimensions without prior notice.

	8605 Flotilla Street City of Commerce CA 90040 USA Tel# (323) 888-6601 FAX # (323) 888-6699 WEB SITE: CAL-ROYAL.COM Email: sales@cal-royal.com	ITEM NO. CRHD781120	DESCRIPTION CONCEALED LEAF 83" HEAVY DUTY CONTINUOUS GEARED HINGE	NOT TO SCALE PRIMARY DIMENSION SHOWN IN INCHES, DIMENSIONS IN () ARE MM PAGE 1 of 1	UNIT BBT / ADG AED/ CVL	Prepared By: 10/27/2023	DATE 10/27/2023	DWG. NO. HGT-3038-10/23-1of1 Ver. 1.0 Rev.
--	---	------------------------	---	--	----------------------------	----------------------------	--------------------	--