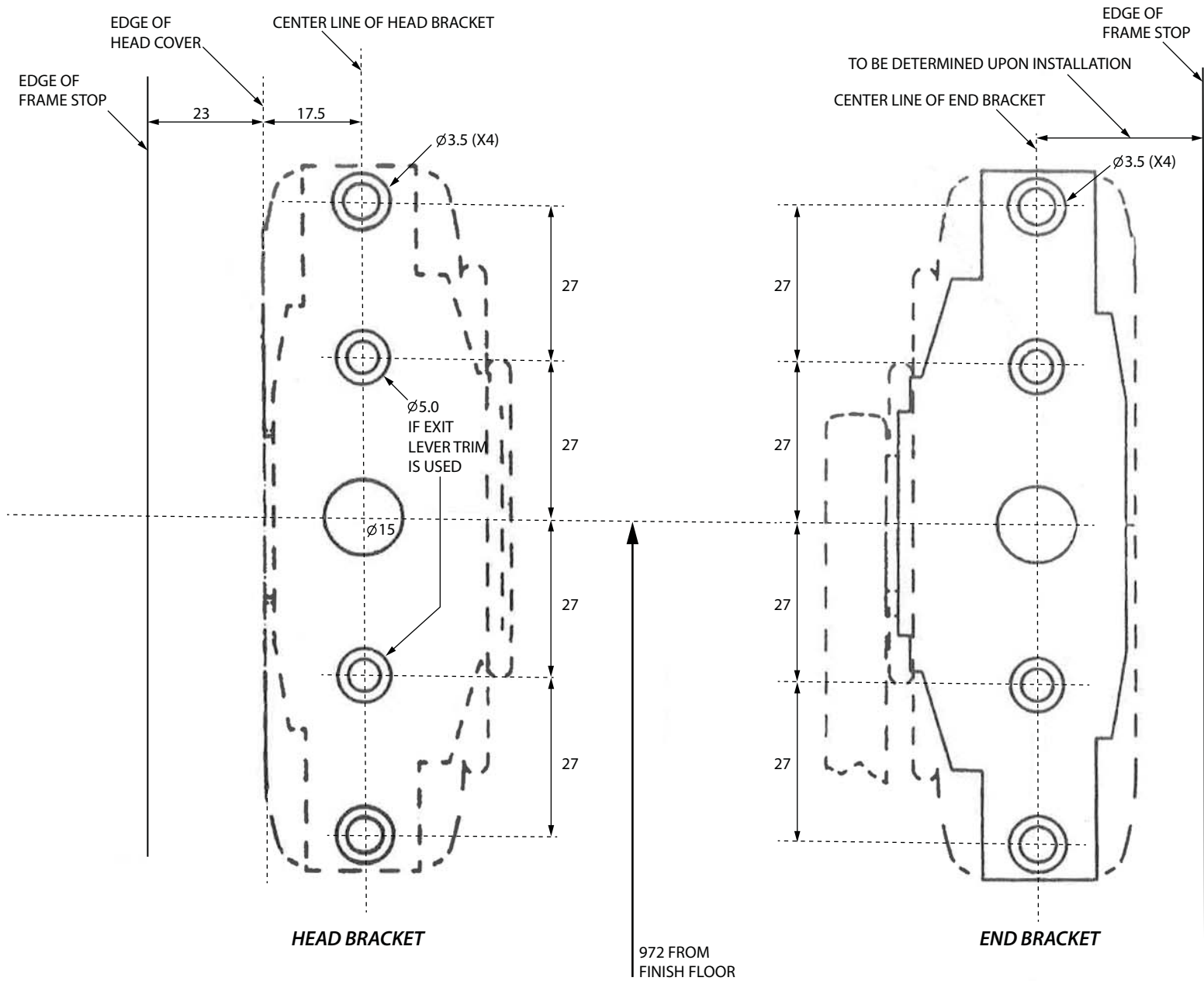




INSTALLATION INSTRUCTIONS & TEMPLATE

EU677 SERIES SURFACE VERTICAL ROD EXIT DEVICE

	<ol style="list-style-type: none"> 1 Install the Mounting Plates. 2 Install the head bracket with the supplied screws. 3 Install the handle as shown. 4 Install the tail bracket. 5 Install the top and bottom latches then install the rods. Fasten the head and tail bracket covers.



NOTE: ALL DIMENSION IN MILLIMETER



EU677 SERIES SURFACE VERTICAL ROD EXIT DEVICE TOP & BOTTOM STRIKE TEMPLATE

