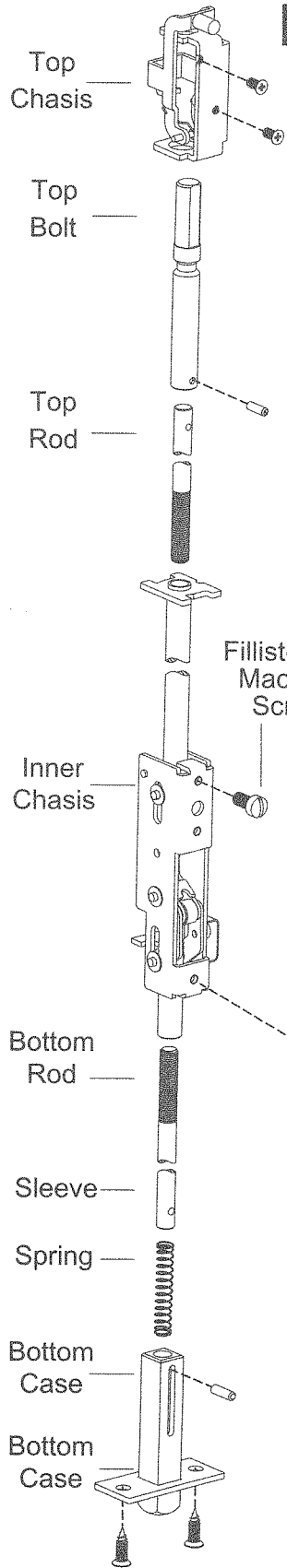
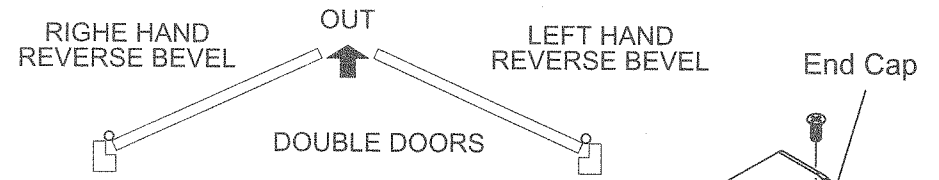


INSTRUCTIONS FOR INSTALLING CAL-ROYAL M77CVR . CONCEALED VERTICAL ROD EXIT DEVICE



Available stock length
 - For 32" doors, Device can be cut to fit doors down to 24" wide
 - For 36" doors, Device can be cut to fit doors down to 32" wide
 - For 48" doors, Device can be cut to fit doors down to 36" wide

THIS EXIT DEVICE IS HANDED
 CHECK HAND OF DEVICE AGAINST APPLICATION



Door Surface must be flush to allow Exit Device rest on flat surface of the door

Fillister HD Machine Screw

Main Chasis

Mounting Rail

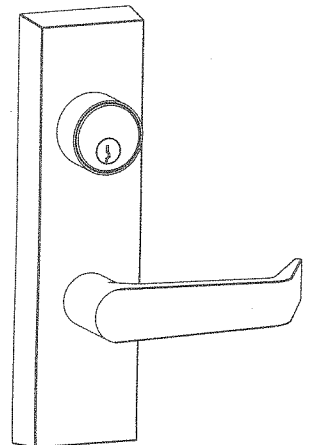
Push Rail

Mounting Plate

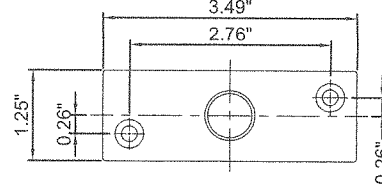
Dogging
 To operate pushrail, insert dogging key and turn clockwise
 Dogging not allowed on FC2100F

Head Cover

#10-21 FL HD Machine screws or #10x1" FL HD wood screws

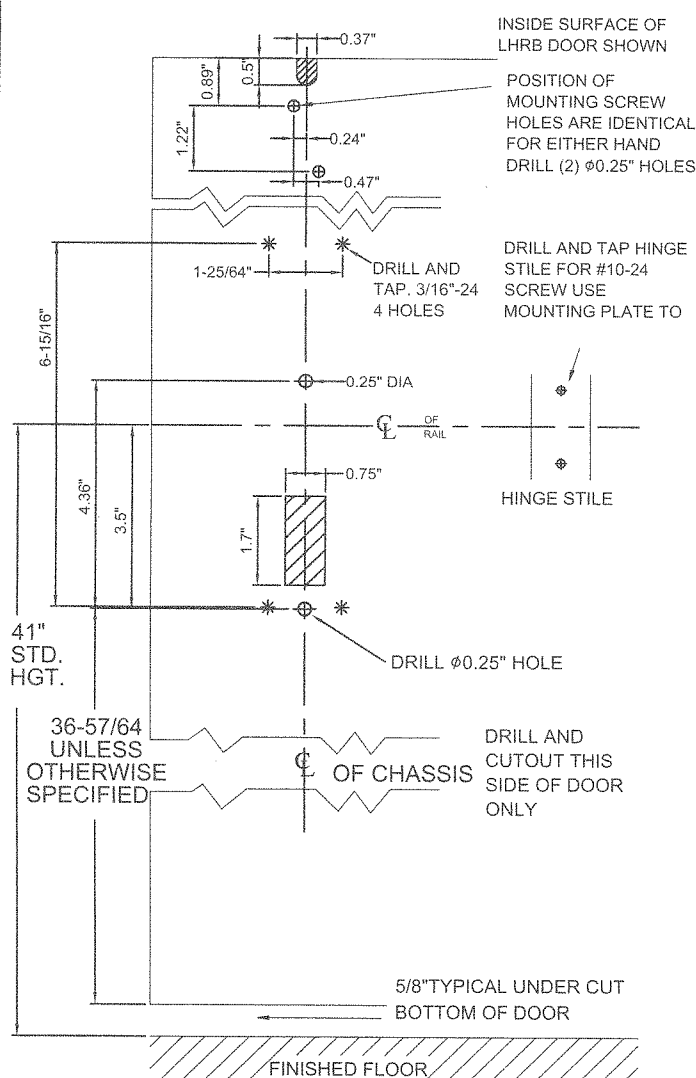


If Esc Lever trim is used, See Instruction sheet packed with the trim

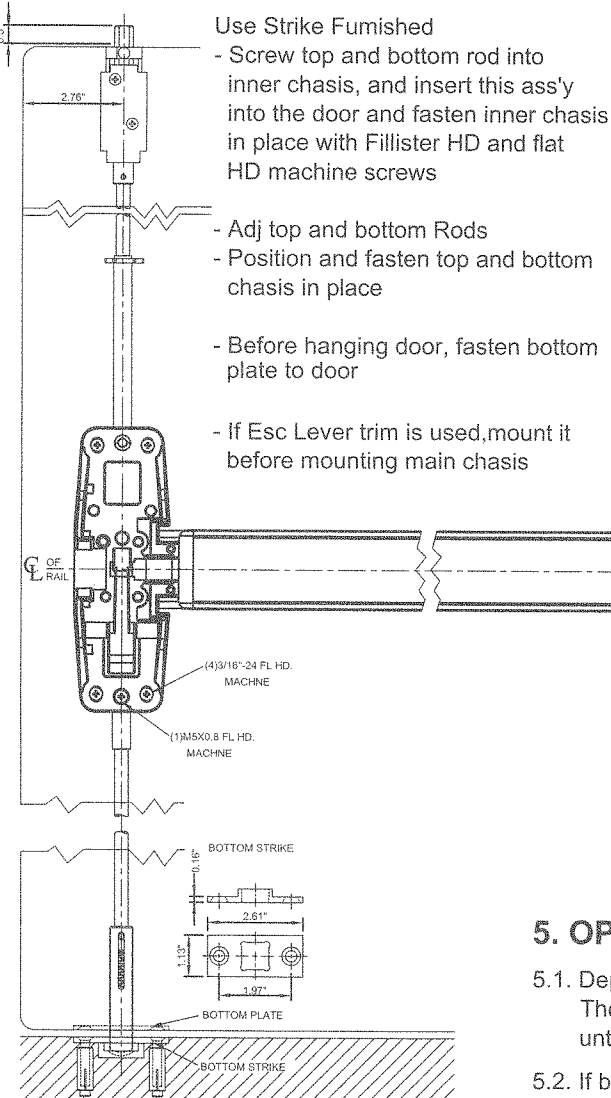


TOP STRIKE

1. PREPARE DOOR

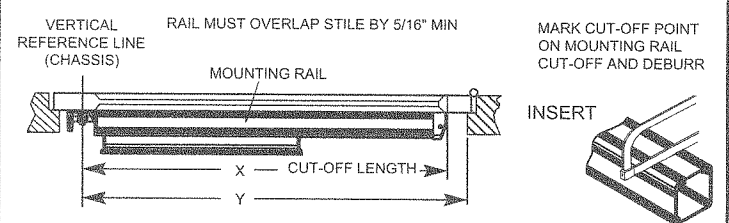


2. MOUNT ROD & CHASIS



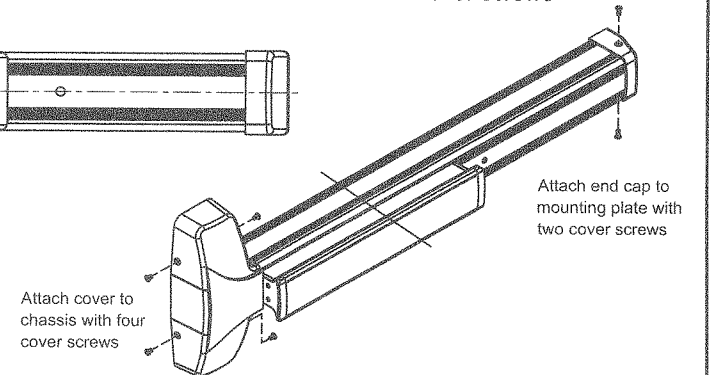
3. MOUNT RAIL ASS'Y

- 3.1. Determine cut-off dimension "X" by subtracting 1-1/8" from dimension "Y"
- 3.2. Depress arm into rail opening and slide rail onto chassis dimension "Y"



4. ATTACH COVER

- Attach cover to chasis with two cover screws



5. OPERATION CHECK

- 5.1. Depress Push rail, bolt should retract into door. The latch retractor button should pop out and hold the bolt retracted until button is depressed
- 5.2. If button does not pop out, remove top chasis and screw the top rod in one turn. Replace top chasis and repeat abv operation