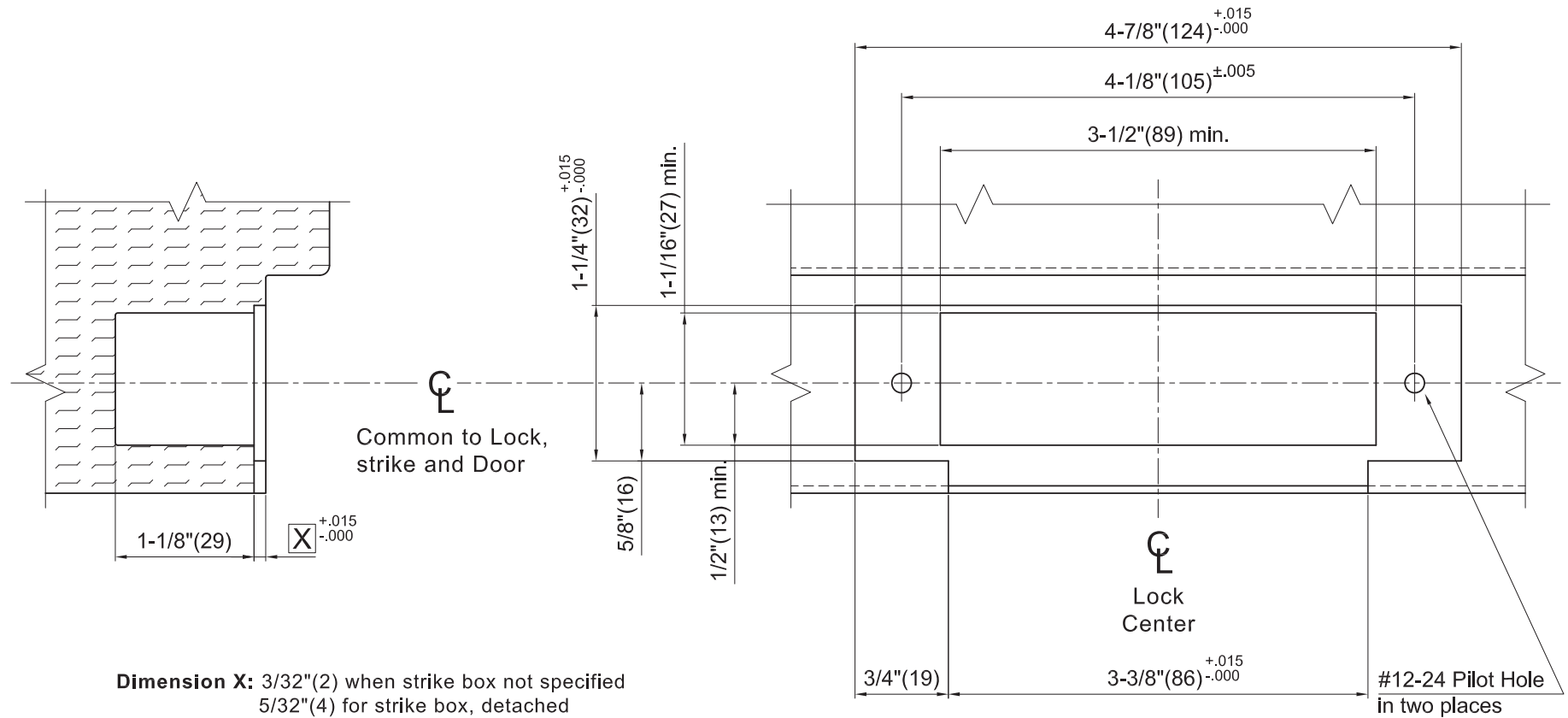


NOTE:

1. When reinforcement plate in specified mortise additional 1/8"(3) to Dimension **X**
2. Strike location on frames must be adjusted for thickness of door silencers, when used

NOT TO SCALE



All dimensions are given in inches(mm). Dimensions shown in parentheses () are in millimeters.

Door Type :	Wood
Style :	ANSI Standard for 1-3/4"(44mm) door
Standard for :	SL, XP, SG, GN - Series
Optional for :	BA - Series

ASA Strike (ANSI A115.2)
Cylindrical Locks
Wood Door Frame Preparation

CAL-ROYAL
PRODUCTS, INC.
Website: cal-royal.com • Email: sales@cal-royal.com
Template Number