

TEMPLATE

OF CA9800 & CAF9800 RIM DEVICE

FOLD THIS LINE AND PLACE THIS EDGE AGAINST FACE OF DOOR STOP

BACKSET

$2\frac{1}{4}"$ (57.2mm)

$1\frac{17}{32}"$ (39mm)

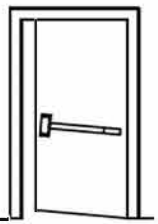
FOR SEX BOLT, DRILL $\frac{3}{8}"$ (9.6mm) *4 HOLE OUTSIDE

FOR LEVER TRIM VERTICAL THRU-BOLT MOUNTING

FOR EXTERIOR ACCESS BY LEVER/KNOB TRIM DRILL $2\frac{1}{8}"$ (54mm) DIA. HOLE

FOR EXTERIOR ACCESS BY RIM CYLINDER DRILL $1\frac{1}{2}"$ (31.8mm) DIA. HOLE

41" (1041mm) FROM FINISHED FLOOR TO CENTER LINE OF PUSH RAIL



LHR

TAPPED 12# HOLES*3

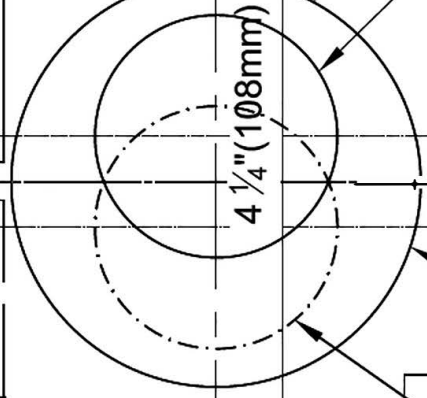
1" (25.4mm)

$2\frac{3}{8}"$ (60.2mm)

LINE UP WITH $\frac{1}{8}"$ MARKED ON DOOR

$6\frac{21}{32}"$ (169mm)

$2\frac{3}{4}"$ (70mm)



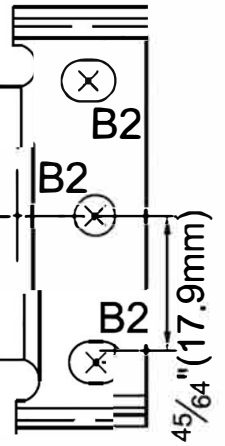
$4\frac{1}{4}"$ (108mm)

This mounting hole is NO NEEDED, if there is NO OUTSIDE TRIM applied!

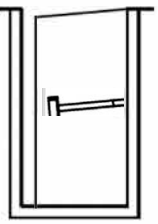
FOR EXTERIOR ACCESS BY RIM CYLINDER DRILL $1\frac{1}{2}"$ (31.8mm) DIA. HOLE

(RHR)

41" (1041mm) FROM FINISHED FLOOR TO CENTER LINE OF PUSH RAIL



RHR



For Security Plate

DO NOT drill these two(2) holes on door, if the outside trim is not needed to be fixed by them.

B1

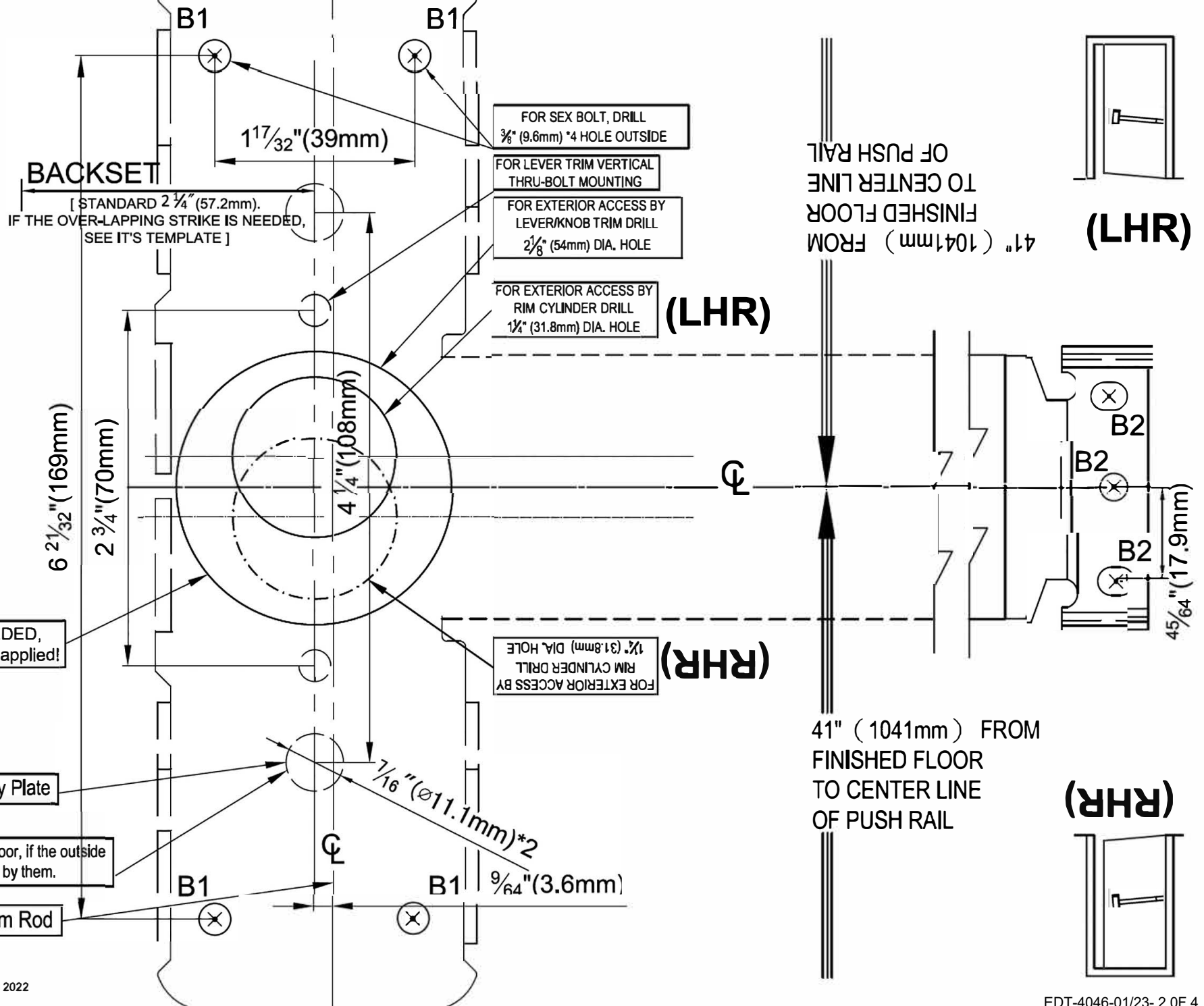
B1

$\frac{7}{16}"$ (11.1mm)*2



TEMPLATE

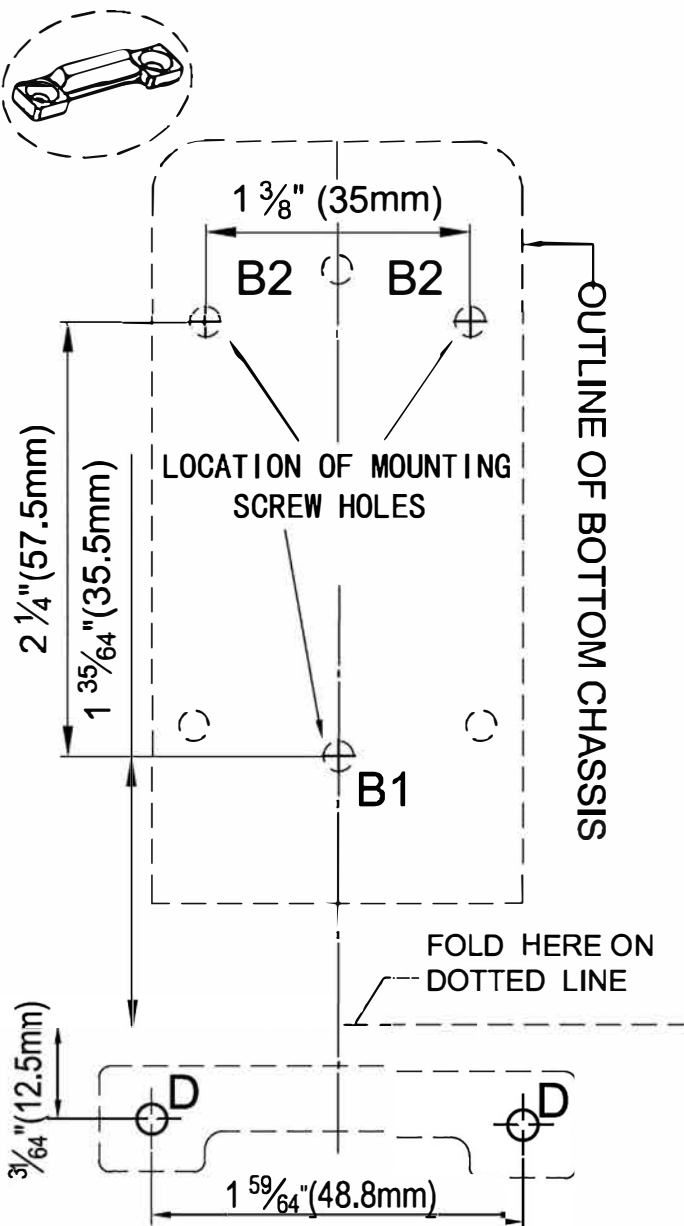
OF CA9860V / CAF9860V SVR EXIT DEVICE



TEMPLATE of Bottom LATCH (1:1)

【Handicap Strike (Optional use)】

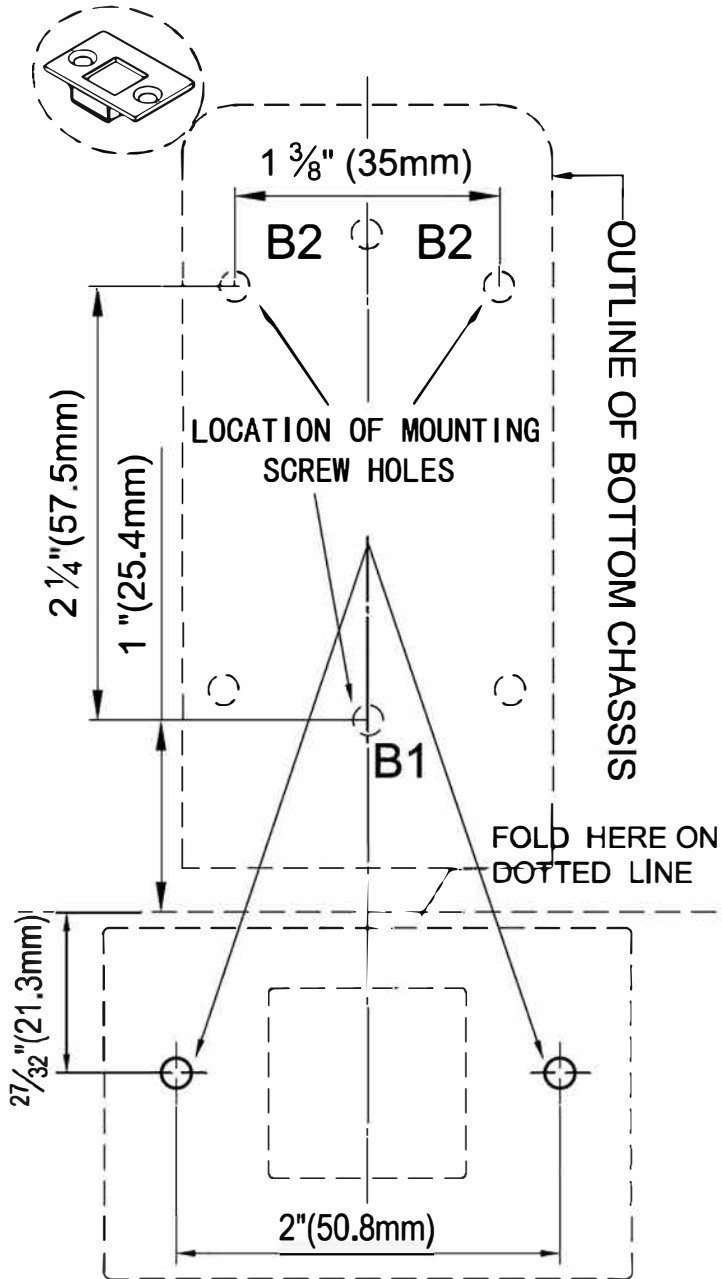
*** FOR NON-FIRE RATED ONLY**



TEMPLATE of Bottom LATCH (1:1)

【Mortise in Strike (Optional use)】

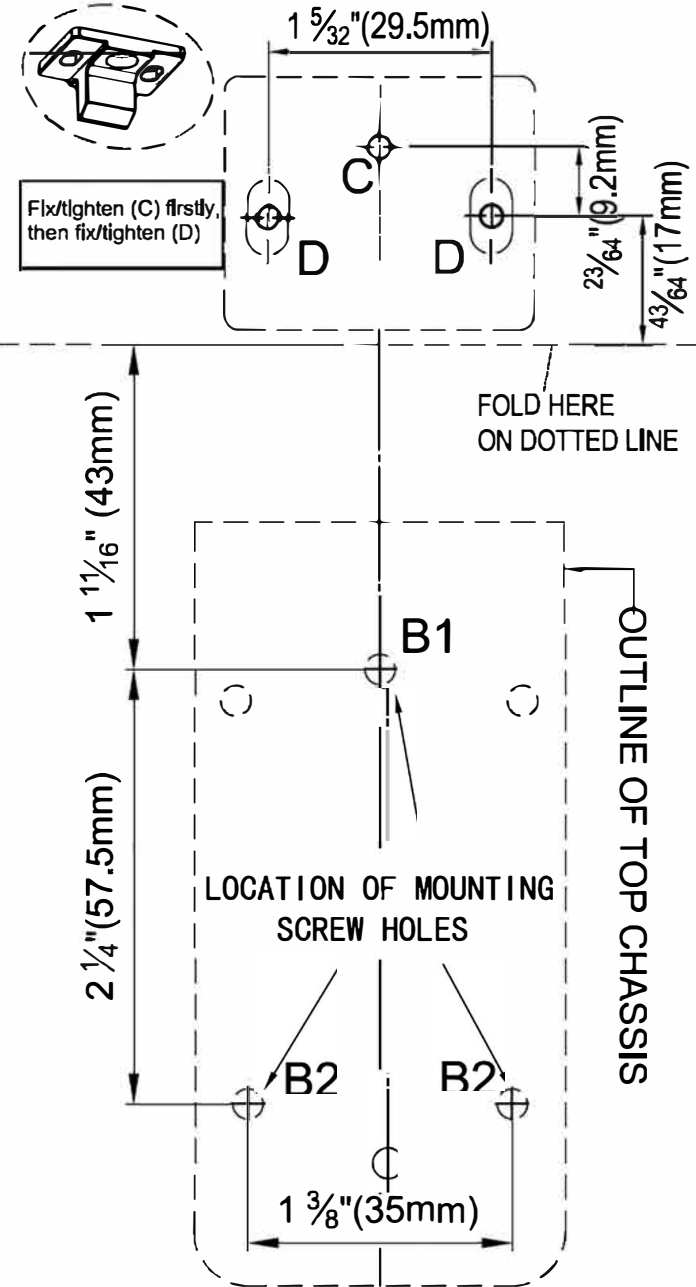
*** FOR NON-FIRE RATED ONLY**



TEMPLATE of Top LATCH (1:1)

【Top Strike (regular use)】

*** FOR NON-FIRE RATED ONLY**

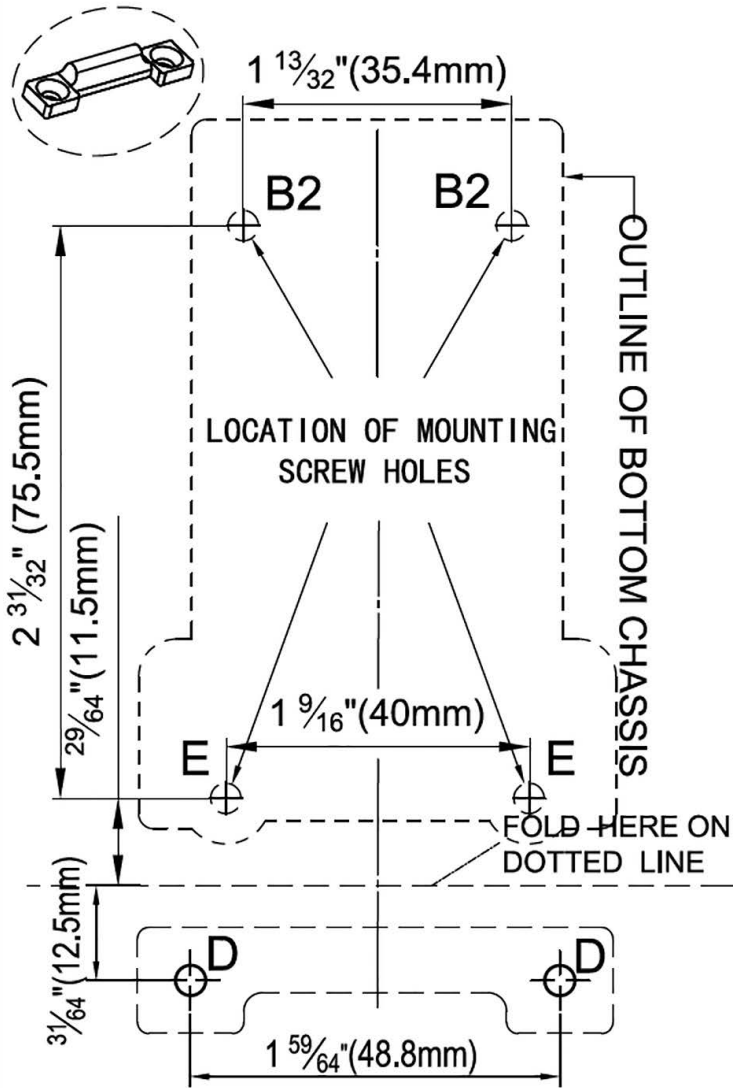


TEMPLATE of Bottom LATCH (1:1)

【Handicap Strike (Optional use)】



FOR FIRE RATED ONLY

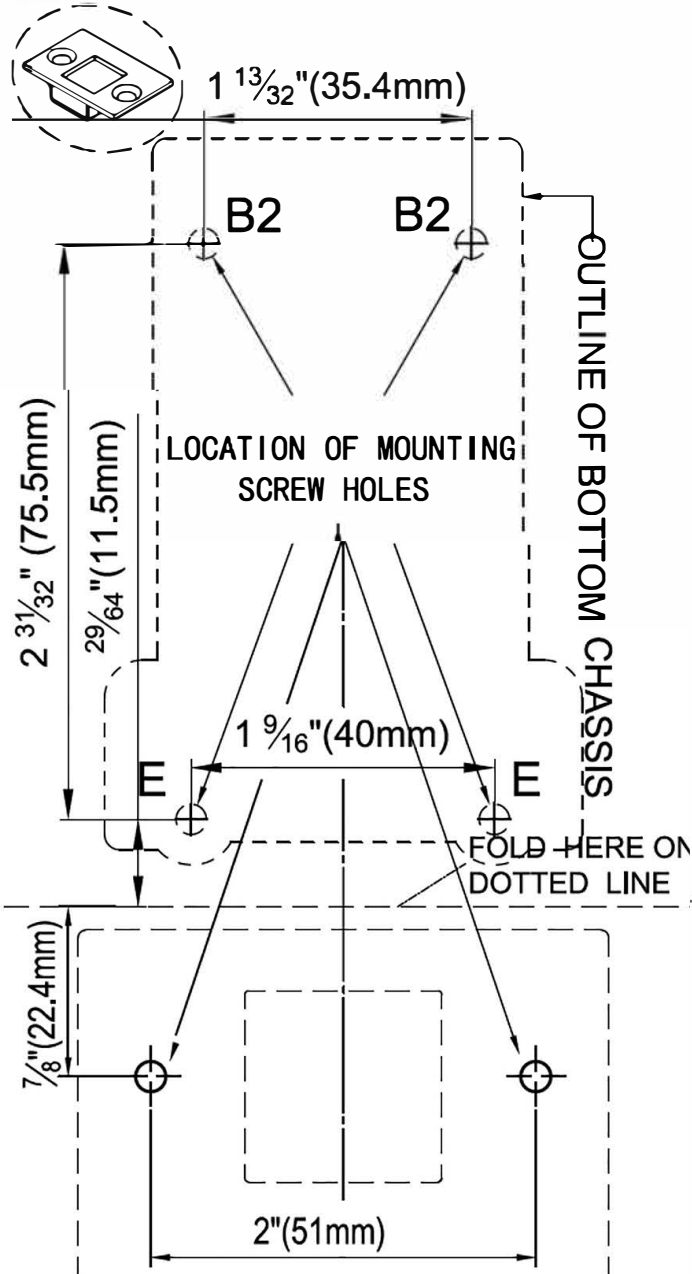


TEMPLATE of Bottom LATCH (1:1)

【Mortise in Strike (Optional use)】



FOR FIRE RATED ONLY



TEMPLATE of Top LATCH (1:1)

【Top Strike (regular use)】



FOR FIRE RATED ONLY

