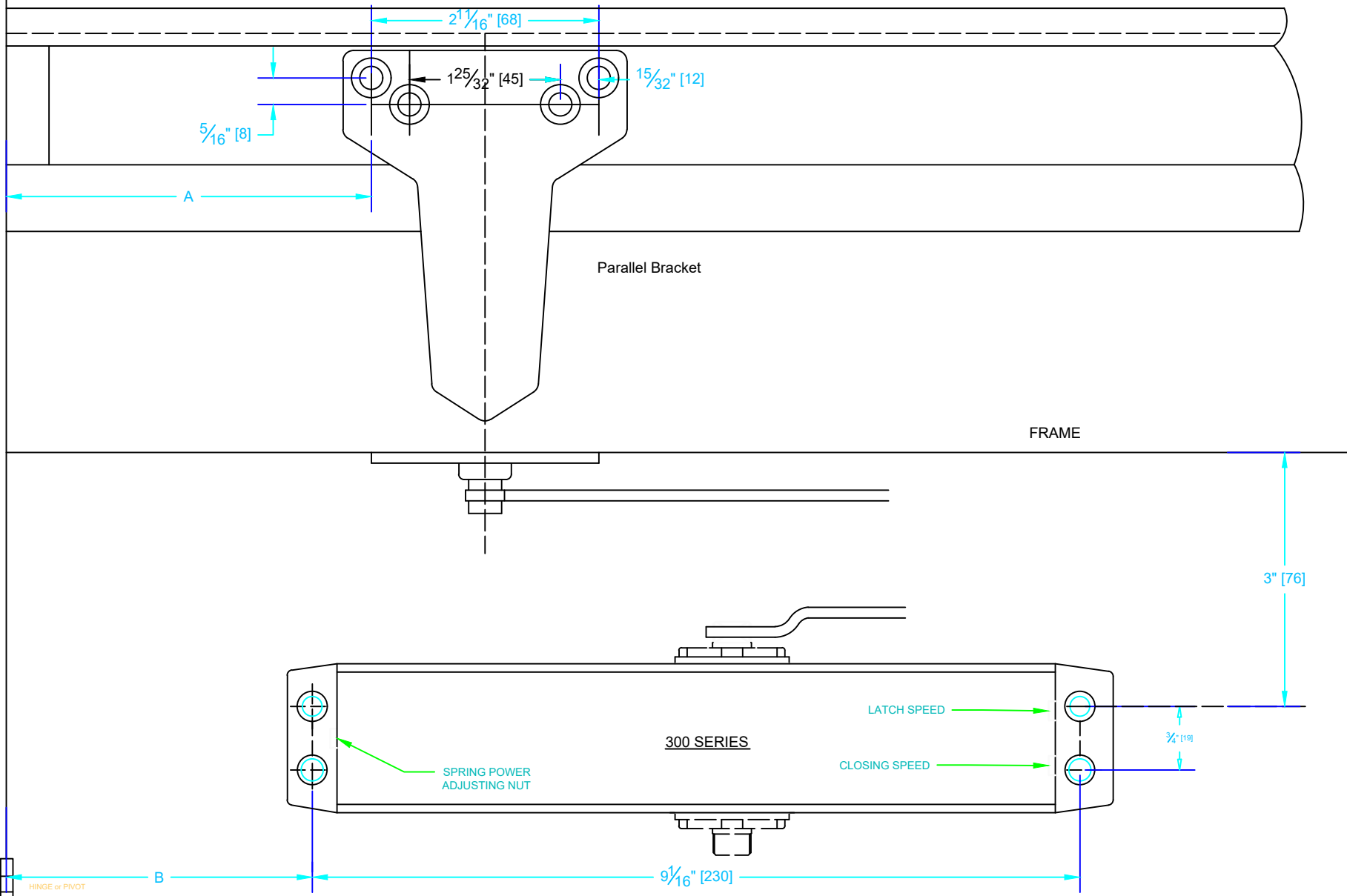


HINGE or PIVOT



OPENING	DIM. A	DIM. B
TO 100°	7-7/8"(200mm)	5-29/32"(150mm)
120°-180°	6-11/16"(170mm)	4-23/32"(120mm)

NOTE: ILLUSTRATION SHOWN IS FOR PARALLEL ARM APPLICATION. FOR LEFT HAND, REVERSE TEMPLATE.
(DOOR CLOSER PARALLEL ARM TEMPLATE APPLICATION (PUSH SIDE))

The illustration and technical description in this cut sheet is current as of the date in version date on the right. Cal-Royal Product reserves the right to, and may, on occasions, make changes and/or improvements in designs and dimensions without prior notice.



6605 Flotilla Street
City of Commerce
CA 90040 USA
Tel.# (323) 888-6601
FAX # (323) 888-6699
WEB SITE:
CAL-ROYAL.COM
Email: sales@cal-royal.com

ITEM NO.	DESCRIPTION :
300 SERIES	300 SERIES DC PARALLEL ARM TEMPLATE PUSH SIDE

NOT TO SCALE
PAGE 1 OF 1

UNIT
PRIMARY DIMENSION SHOWN IN INCHES, DIMENSIONS IN () ARE MM

Prepared By:
BBT / ADG
AED/ CVL

DATE
09/27/2023

DWG. NO.
DCT-1042-09/23-1of1
REV -----