

\* IT\_ Larghezza anta mm.  
EN\_ Door width mm.  
FR\_ Largeur de porte en mm.  
DE\_ Türbreite in mm.  
RU\_ Ширина двери мм.  
ES\_ Ancho de la puerta mm.  
PT\_ Largura da porta mm.

IT\_ A 2 Cerniere  
B 3 Cerniere simmetriche  
C 3 Cerniere asimmetriche  
D 4 Cerniere

EN\_ A 2 Hinges  
B 3 Symmetrical hinges  
C 3 Asymmetrical hinges  
D 4 Hinges

FR\_ A 2 Paumelles  
B 3 paumelle, montage symétrique  
C 3 paumelles, montage asymétrique  
D 4 Paumelles

DE\_ A 2 Bänder  
B 3 symmetrisch angeordnete Bänder  
C 3 asymmetrisch angeordnete Bänder  
D 4 Bänder

RU\_ A 2 петли  
B 3 симметричных петли  
C 3 ассиметричных петли  
D 4 петли

ES\_ A 2 Bisagras  
B 3 Bisagras simetricas  
C 3 Bisagras asimetricas  
D 4 Bisagras

PT\_ A 2 Dobradiças  
B 3 Dobradiças simetricas  
C 3 Dobradiças asimetricas  
D 4 Dobradiças

IT\_ Altezza porta 2100 mm; per H. > 2100 o per utilizzi con chiudiporta, consultare l'ufficio tecnico.

EN\_ Door height 2100 mm; for H. > 2100 or for doorclosers devices please contact our technical office.

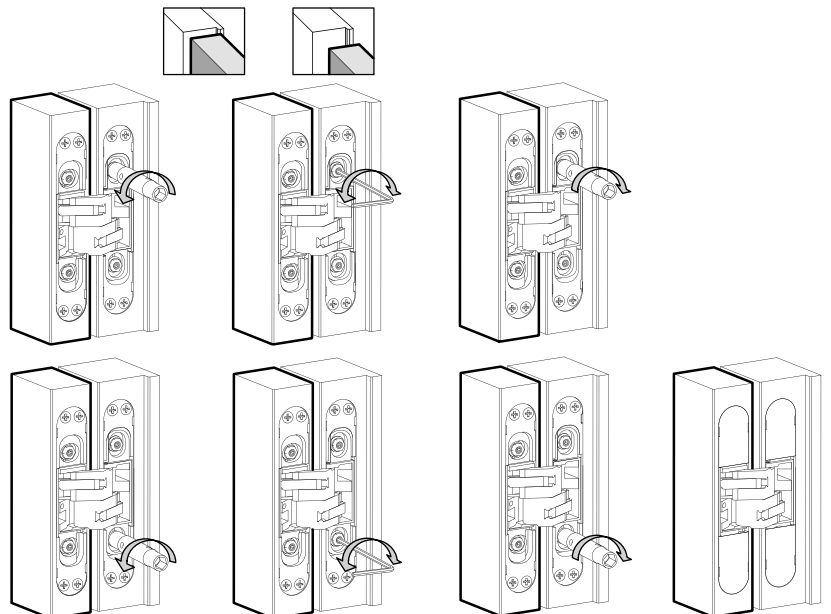
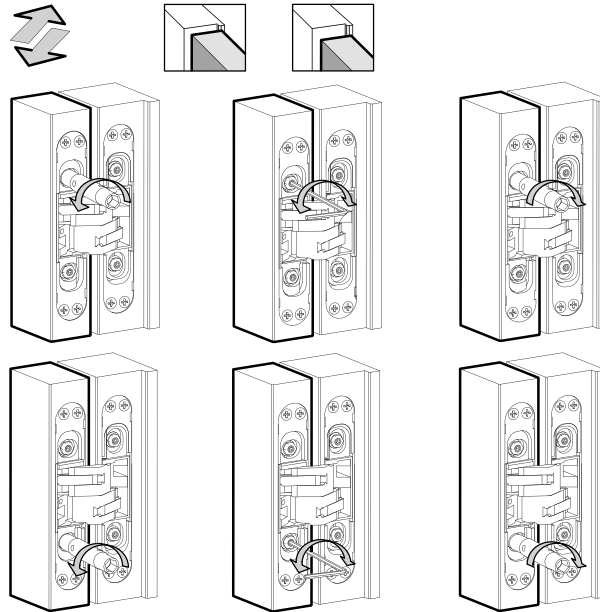
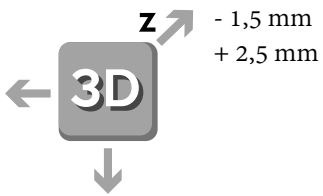
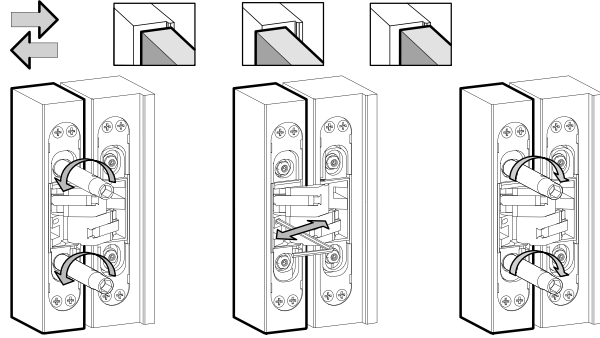
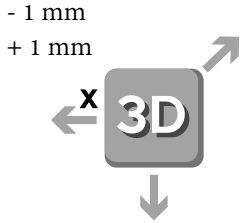
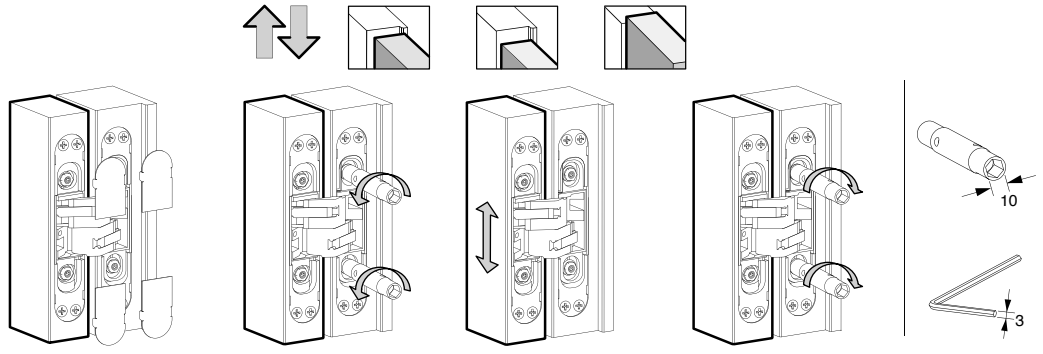
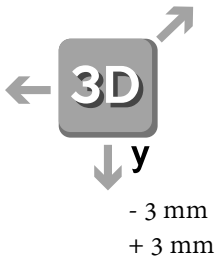
FR\_ Hauteur de porte 2.100 mm; pour portes > 2100 ou pour ferme-portes, veuillez contacter notre bureau technique.

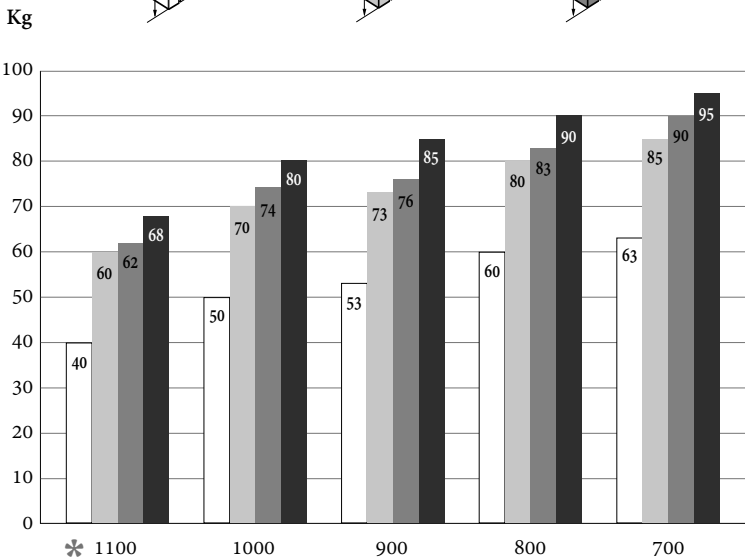
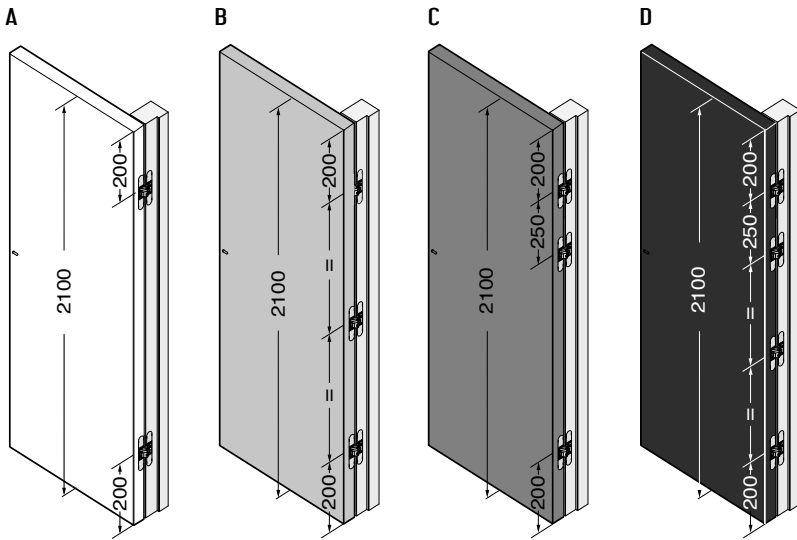
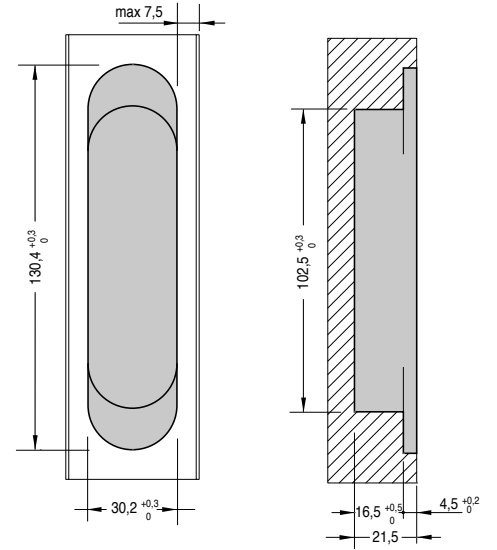
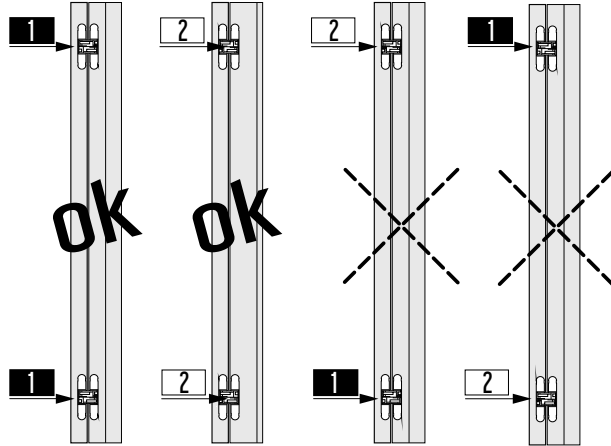
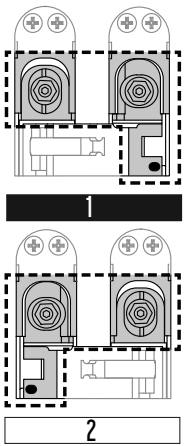
DE\_ Türhöhe 2.100 mm; für H. > 2100 oder bei OTS, bitte kontaktieren sie unsere tchnische abteilung.

RU\_ Высота двери 2100 мм; для высоты > или дверей с доводчиком пожалуйста, свяжитесь с нашим техническим отделом.

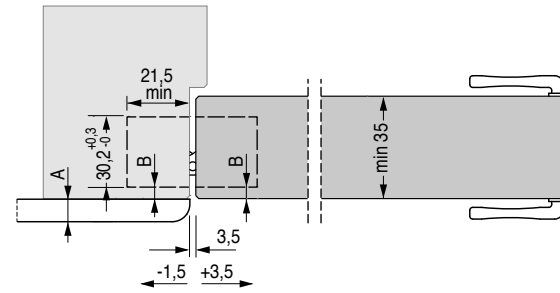
ES\_ Altura puerta 2100 mm; para H. > 2100 o para usos con cierrapuertas, contactar nuestro Departamento técnico.

PT\_ Altura da porta 2100 mm; para H. > ou para usos com mecanismo fechaporta, favor se-consultar com o dep.to tecnico.





\* IT\_ Larghezza anta mm.  
EN\_ Door width mm.  
FR\_ Largeur de porte en mm.  
DE\_ Türbreite in mm.  
RU\_ Ширина двери мм.  
ES\_ Ancho de la puerta mm.  
PT\_ Largura da porta mm.



- IT\_ A 2 Cerniere  
B 3 Cerniere simmetriche  
C 3 Cerniere asimmetriche  
D 4 Cerniere
- EN\_ A 2 Hinges  
B 3 Symmetrical hinges  
C 3 Asymmetrical hinges  
D 4 Hinges
- FR\_ A 2 Paumelles  
B 3 paumelle, montage symétrique  
C 3 paumelles, montage asymétrique  
D 4 Paumelles
- DE\_ A 2 Bänder  
B 3 symmetrisch angeordnete Bänder  
C 3 asymmetrisch angeordnete Bänder  
D 4 Bänder
- RU\_ A 2 петли  
B 3 симметричных петли  
C 3 ассиметричных петли  
D 4 петли
- ES\_ A 2 Bisagras  
B 3 Bisagras simétricas  
C 3 Bisagras asimétricas  
D 4 Bisagras
- PT\_ A 2 Dobradiças  
B 3 Dobradiças simétricas  
C 3 Dobradiças asimétricas  
D 4 Dobradiças

IT\_ Altezza porta 2100 mm; per H. > 2100 o per utilizzi con chiudiporta, consultare l'ufficio tecnico.  
EN\_ Door height 2100 mm; for H. > 2100 or for doorclosers devices please contact our technical office.  
FR\_ Hauteur de porte 2.100 mm; pour portes > 2100 ou pour ferme-portes, veuillez contacter notre bureau technique.  
DE\_ Türhöhe 2.100 mm; für H. > 2100 oder bei OTS, bitte kontaktieren sie unsere tchnische abteilung.  
RU\_ Высота двери 2100 мм; для высоты > или дверей с доводчиком пожалуйста, свяжитесь с нашим техническим отделом.  
ES\_ Altura puerta 2100 mm; para H. > 2100 o para usos con cierrapuertas, contactar nuestro Departamento técnico.  
PT\_ Altura da porta 2100 mm; para H. > ou para usos com mecanismo fechaporta, favor se-consultar com o dep.to tecnico.

