

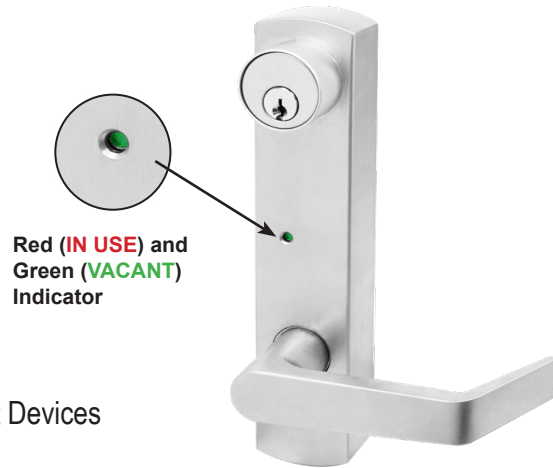
Trim Selection

CLUTCH LEVER ESCUTCHEON



CONSTRUCTION

- Steel Base Material with Aluminum Alloy Escutcheon Trim
- Red (**IN USE**) and Green (**VACANT**) Indicator Feature
- Clutch Mechanism
- Double Heavy Duty Spring Support to prevent sagging and enhance operation
- Grade 1, Thru-Bolted design. Non-Handed design.
- Easily field reversible
- Includes Heavy Duty Steel Spindle.
- Available for Fire and Non-Fire Rated Rim and Vertical Rod Exit Devices
- Standard 6-Pin Schlage "C" Mortise Cylinder included

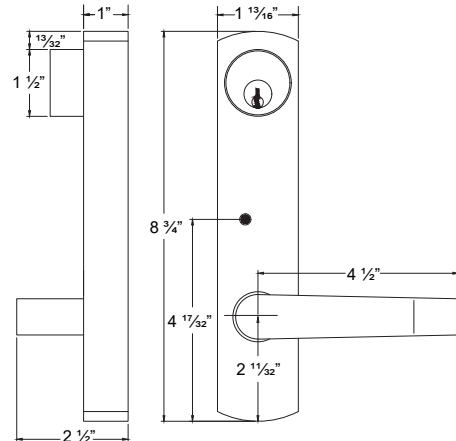


DOOR THICKNESS

- Standard 1 $\frac{3}{4}$ " to 2 $\frac{3}{8}$ ".
- Cut spindle and screws to fit 1 $\frac{3}{8}$ " door thickness .

ESCUTCHEON DIMENSIONS

- 1 $\frac{13}{16}$ " width x 8 $\frac{3}{4}$ " length
- Lever length: 5"



ESC45-00
 ⚙ ICESC45-00
 ⚙ ICSCESC45-00

ENTRANCE

Clutch Entrance, key locks or unlocks escutcheon trim. ANSI Function (08)
 Operates as classroom function

ESC45-05
 ⚙ ICESC45-05
 ⚙ ICSCESC45-05

STOREROOM

Clutch Storeroom, key unlocks lever, lever retracts latch bolt, otherwise always locked. ANSI Function (09)

Anti-Microbial Coating available in US26D Only. Use part # "**ANTB-TRIM**" when ordering.

ESC45-30

PASSAGE

Trim always operable and free. ANSI Function (14)

ESC45-40

DUMMY

Dummy Escutcheon trim. ANSI Function (02)

KEYWAY: 6-Pin solid brass "C" keyway Mortise Cylinder standard. Optional: Schlage E, Schlage C-K, Russwin D1-2-3-4, Corbin 59/60, Sargent LA-LB-LC, Falcon/Weiser E, Arrow A, Yale 8, Yale GA and Kwikset. Can also accept Medeco, Assa, Kaba and **Cal-Royal HSK High Security** Cylinders.

⚙ (IC) **INTERCHANGEABLE CORE** locks will accept compatible 6 or 7-Pin cores with **BEST, FALCON and ARROW**.

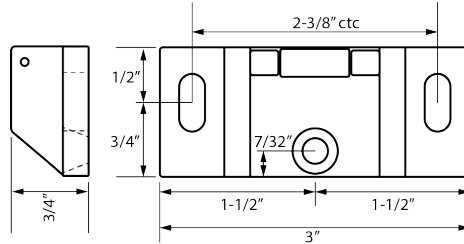
⚙ (ICSC) **INTERCHANGEABLE CORE** available with **Schlage Full Size Format**. Corbin, Sargent and Yale format also available.

Strike & Accessories

Strike for use with 45-RIM & F45-RIM Exit Devices

610

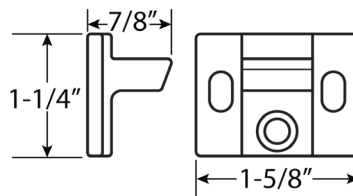
Roller Rim Strike,
surface applied.
Standard Packaging.



Strike for use with 45-SVR & F45-SVR Exit Devices

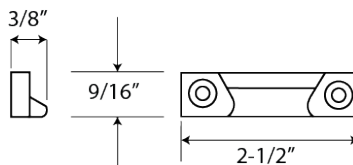
620

Top Strike.
Standard packaging.



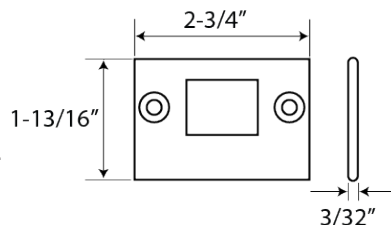
221

Handicap Bottom Strike.
Applied to surface of floor
or to a flat threshold.
Standard packaging.

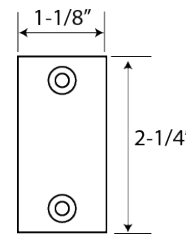


233

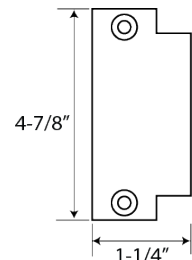
Bottom strike.
Flush mounting stainless steel.
Furnished with expansion shields.
Requires mortise in the floor.



Additional Accessories



LFF
Lock front filler



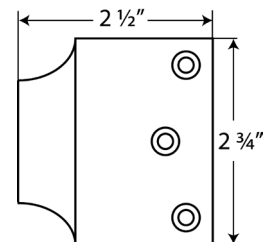
SF
Strike filler

EXTROD66-12 – 12" Extension Rod
EXTROD66-24 – 24" Extension Rod

Overlapping Strike

N251

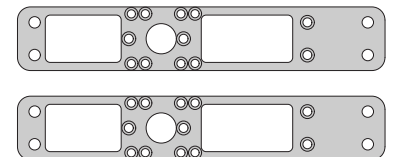
Surface applied. Used on
inactive leaf for device on
active leaf of pair of doors
without mullion.



GLASS BEAD SHIM KITS

201

for 45-RIM
& F45-RIM,
1/8" thick



212

for 45-SVR
& F45-SVR,
1/8" thick

