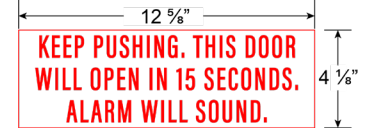


# DE7700 Series

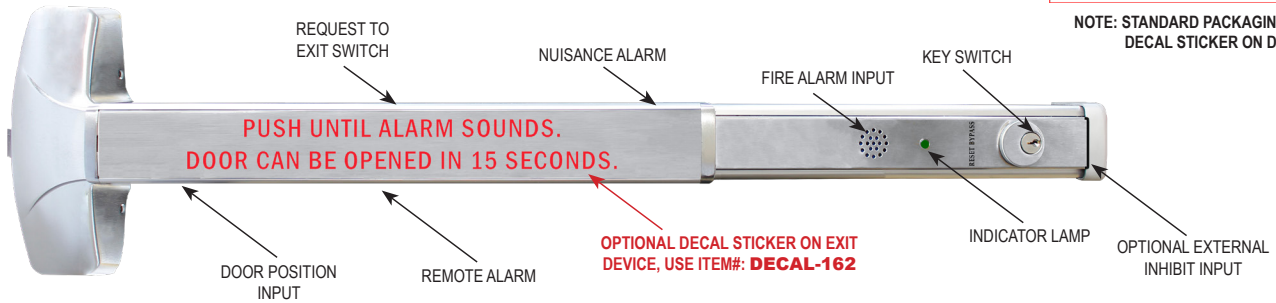
GRADE 1 Delayed Egress All in One Exit Device

ANSI BHMA A156.24 Delayed Egress Locking System Approved



**KEEP PUSHING. THIS DOOR WILL OPEN IN 15 SECONDS. ALARM WILL SOUND.**

NOTE: STANDARD PACKAGING INCLUDES DECAL STICKER ON DOOR.



FEATURES		
EGRESS DELAY	BUILT-IN ANNUNCIATION	CODE COMPLIANCE
<ul style="list-style-type: none"> <li>All in One Device</li> <li>15 or 30 second exit delay (Factory set to 15 secs)</li> <li>1 or 2 second nuisance delay</li> <li>Alarm and Lock reset</li> <li>1 to 30 second momentary bypass</li> <li>Sustained bypass</li> </ul>	<ul style="list-style-type: none"> <li>Armed mode</li> <li>Nuisance mode</li> <li>Irreversible egress mode</li> <li>Release mode</li> <li><i>Optional External Inhibit Input</i></li> <li>Remote override</li> <li>Remote reset</li> </ul>	<ul style="list-style-type: none"> <li>IFC International Fire Code</li> <li>IBC International Building Code</li> <li>NFPA 101 Life Safety Code</li> <li>NFPA 1 Uniform Fire Code</li> <li>California Building Code</li> <li>Field selectable automatic or manual power up after emergency release or power loss</li> </ul>
CONTROL INPUTS	TRIGGER MODES	MONITORING OUTPUTS
<ul style="list-style-type: none"> <li>1 to 30 second request-to-exit and bypass input with anti-tailgate and jumper selectable door prop alarm</li> <li>Reset</li> </ul>	<ul style="list-style-type: none"> <li>Egress Alarm triggered by Push Bar</li> <li>Trigger input from external device field selectable (N/O or N/C)</li> </ul>	<ul style="list-style-type: none"> <li>Armed mode</li> <li>Nuisance mode</li> <li>Release status</li> </ul>

**MUST ORDER CR602RF or CR631RF POWER SUPPLY TO HONOR WARRANTY AND UL MARKING**

APPLICATION	
<p>When unauthorized egress is initiated the device delays egress through the door for 15 seconds (or 30 seconds). Meanwhile, the person exiting must wait while personnel or security responds. The door unlocks after 15 seconds have elapsed permitting egress. When powered by a fire control supervised power supply, the lock will release immediately in an emergency.</p>	<p>FOR USE WITH: (FIRE AND NON-FIRE)</p> <ul style="list-style-type: none"> <li>A7700, AF7700 Rim Exit Devices</li> <li>A7760V, AF7760V Surface Vertical Rod Exit Device<sup>1</sup></li> <li>N-77CVR, N-F77CVR Concealed Vertical Rod Exit Device</li> <li>N-MR7700, N-FMR7700 Mortise Lock Rim Exit Device</li> <li>GLS7700 Narrow Stile Rim Exit Device (on 36" Only)</li> <li>N-77GLS-CVR, N-F77GLS-CVR Narrow Stile Concealed Vertical Rod (on 36" Only)</li> <li>77GLS-SVR, F77GLS-SVR Narrow Stile Surface Vertical Rod (on 36" Only)</li> </ul> <p><sup>1</sup>Recommends use of rod and latch guards and strike monitor for surface vertical rods</p>

TECHNICAL SPECIFICATIONS	
<ul style="list-style-type: none"> <li>24V DC @ 430mA</li> <li>24V DC @ 250mA Slave</li> </ul> <p>Power Supply CR602RF 1 Amp / CR631RF 1.5 Amp</p>	<ul style="list-style-type: none"> <li>Field selectable 12 or 24V DC, regulated and filtered</li> <li>Auto resetting output circuit protection</li> <li>Isolated 13.5 / 27V DC battery charger</li> <li>Low battery disconnect</li> <li>Emergency release input</li> <li>Field selectable UBC &amp; California compliant manual power up</li> <li>Input, output and battery status LED's</li> <li>CR631RF - 16" x 14" x 6.5", CR602RF - 12" x 12" x 4" enclosure</li> <li>Choice of output and door control modules</li> <li>CR631RF - 1.5 Amp, CR602RF - 1.0 Amp</li> <li>Batteries not included</li> </ul>
<p><b>CR631RF</b></p>	<p><b>CR602RF</b></p>

# 7700 Series Delayed Egress Models



## GRADE 1 Delayed Egress All in One Exit Device

## ANSI / BHMA A156.24 Delayed Egress Locking System Approved

For use in institutions, schools, universities, commercial buildings where heavy duty reliable operation is a requirement. 7700 Series Delayed Egress can also be used for fire exit hardware for all types of 4' x 8' single doors and 8' x 8' double doors for up to 3 hour fire labeled installations, it conforms to standards UL10C and UBC 7-2-1997 codes.



**MEETS**  
The Buy American Act



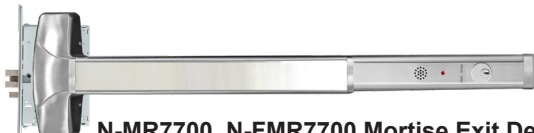
**5-YEAR WARRANTY**



\*Optional Decal sticker for the Exit Device, specify item# "DECAL-162" when ordering.



A7700, AF7700 Rim Panic Exit Devices



N-MR7700, N-FMR7700 Mortise Exit Devices

If a door position switch is not used, the outside trim will operate the door without affecting the armed setting of the device.

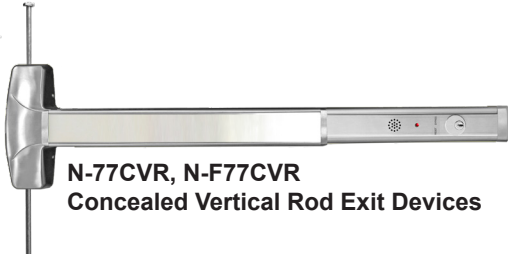


A7760V, AF7760V Surface Vertical Rod Exit Devices

To effectively use the surface vertical rod exit device, it is recommended that the rod and latch guards and monitor strike be used.



N-77GLS-CVR, N-F77GLS-CVR (36" ONLY) Narrow Stile Concealed Vertical Rod Exit Devices



N-77CVR, N-F77CVR Concealed Vertical Rod Exit Devices



GLS7700 Narrow Stile Rim Exit Devices (36" ONLY)

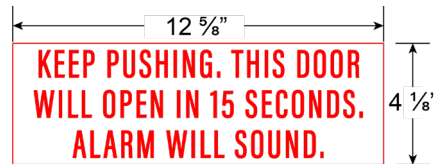
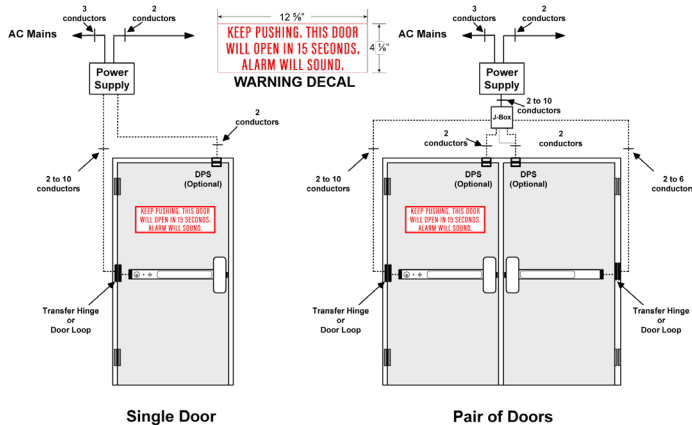
77GLS-SVR, N-F77GLS-SVR (36" ONLY) Narrow Stile Surface Vertical Rod Exit Devices

**DELAYED EGRESS OPTION IS AVAILABLE ON ALL 7700 SERIES EXIT DEVICES ( GLS7700, N-77GLS-CVR & 77GLS-SVR Narrow Stile Exit Devices on 36" Only. Must use DEKIT48. )**

**♦♦ NOTE: DEKIT IS INSTALLED ON THE EXIT DEVICE UPON ORDERING. ♦♦**

*Must Specify: 7700 Series ITEM # and DEKIT36 (for 36") or DEKIT48 (for 48") separately.*

*for Example: A7700EO36 US32D with Delayed Egress option, ORDER: "A7700EO36 US32D" and "DEKIT36 US32D" as two line items.*



NOTE: STANDARD PACKAGING INCLUDES DECAL STICKER ON DOOR.

**MUST ORDER CR602RF OR CR631RF POWER SUPPLY TO HONOR WARRANTY AND UL MARKING**

# Alarm Exit Hardware



## Rim Type Exit Devices

NALRM770036	Alarm Rim Type 36" Door (Panic Grade)
NALRM772048	Alarm Rim Type 48" Door (Panic Grade)
FNALRM770036	Alarm Rim Type 36" Door (Fire Grade)
FNALRM772048	Alarm Rim Type 48" Door (Fire Grade)

## Vertical Rod Type Exit Devices

Prefix "NALRM" before PART #

### Features

- 1, 3, 5-minute and continuous alarm type settings available
- ON and OFF power switch
- Alarm sound frequency is 120 db
- Alarm unit has internal horn. When the push rail is depressed, the horn sounds to provide an audible means of signaling that the door has been opened and breached.
- The key switch to turn alarm off is a standard 1 1/4" cylinder with "C" keyway. The alarm operates on one standard 9-volt transistor battery. When battery is weak the horn will emit an intermittent signal.
- Alarmed units are supplied with a micro switch, which monitors the push rail and the latch bolt for foolproof security on rim devices.
- Alarm unit has a signal OC output that can be linked to external alarm control systems.
- Unit includes "EMERGENCY EXIT ONLY • ALARM WILL SOUND" decal for application on door or unit.

## Cylinder Dogging Kit

**TO ORDER:** Prefix "CD" before PART #. Available for all 7700 Series devices except fire exit hardware

**KIT ONLY:** use PART # 36CD7700 for 36" and 48CD7700 for 48" devices. Specify finish.

**NOTE:** Use PART # 48CD7700 for 36" GLS Narrow Stile Rim, CVR, and SVR Non-Fire Exit Devices



## Finishes (Refer to Price List for Stock Finishes)

Cal-Royal	Description	BHMA	US Finish	Material
10B	Oil Rubbed Bronze	613	US10B	Bronze
32D	Satin Stainless	630	US32D	Stainless Steel

- (IC) INTERCHANGEABLE CORE: Interchangeable Core locks will accept compatible 6 or 7-Pin cores with BEST, FALCON and ARROW
- (ICSC) INTERCHANGEABLE CORE: Indicates function available with **Schlage Full Size Format** Interchangeable Core. Corbin, Sargent and Yale format also available.

# Trim Selection

## CLUTCH CYLINDRICAL LEVER



Non-Handed Grade 1 (Clutch Style)

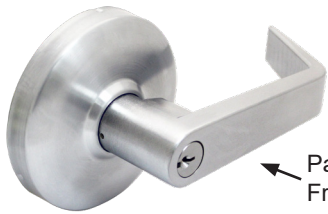
Cylindrical body hardened steel heavy duty tailpiece. For 1 3/4" and 2 1/4" doors. Prefix "THI" before Part # for 2 1/4" door thickness.

Available for fire and non-fire rated rim and vertical rod exit devices.

Rose diameter 3 1/2", lever length 4 3/4". Fits and covers 161 cutout.

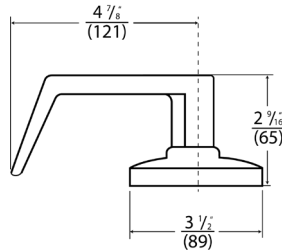
Finishes: US26D, US26, US3, US4, US10B, US10BE, US1

**\*GN DESIGN ONLY: ENT00L, ICENT00L, STR05L, ICSTR05L, PAS30L, DUM40L IN US32D FINISH, ALL STAINLESS STEEL EXTERIOR. INCLUDES GRADE 304SS LEVER AND ROSE**



**GN DESIGN**

Patented Clutch Freewheeling



- ENT00L or
- ICENT00L or
- ICSCENT00L4
- SARICENT00L (Sargent)
- RUSICENT00L (Corbin / Russwin)
- YALICENT00L (Yale)
- 8000K
- STR05L or
- ICSTR05L or
- ICSCSTR05L4
- SARICSTR05L (Sargent)
- RUSICSTR05L (Corbin / Russwin)
- YALICSTR05L (Yale)
- PAS30L
- DUM40L

- ENTRANCE**  
Key locks and unlocks lever. Operates as CLASSROOM FUNCTION. ANSI Function (08)
- Ball Knob Keylock
- STOREROOM**  
Key operates lever, otherwise always locked. ANSI Function (09)
- PASSAGE**  
Trim always operable and free. ANSI Function (14)
- DUMMY**  
Dummy trim. One sided ANSI Function (02)

**KEYWAY:** 6-Pin solid brass "C" keyway standard. Optional: Schlage E, Schlage C-K, Russwin D1-2-3-4, Corbin 59/60, Sargent LA-LB-LC, Falcon/Weiser E, Arrow A, Yale 8, Yale GA and Kwikset. Can also accept Medeco, Assa, Kaba and **Cal-Royal HSK** High Security Cylinders.

- (IC) **INTERCHANGEABLE CORE:** Interchangeable Core locks will accept compatible 6 or 7-Pin cores with **BEST, FALCON and ARROW.**
- (ICSC) **INTERCHANGEABLE CORE:** Indicates function available with **SCHLAGE, CORBIN/RUSSWIN, SARGENT and YALE Full Size Format** Interchangeable Core

KEYWAY	+	DESIGN	+	FUNCTION	+	FINISH
BEST, FALCON, & ARROW - SCHLAGE - CORBIN/RUSSWIN - SARGENT - YALE -	}	IC ICSC RUSIC SARIC YALIC	}	AT SPA TUB* AUG DAN LON TAC	}	ENT00L STR05L PAS30L DUM40L
<p style="text-align: center;"><b>HOW TO ORDER IN LFIC</b></p> <p style="text-align: center;">Example: ICSCENT00L4 US26D in "SPA" design is ICSCSPAENT00L4 US26D</p>						

\*\*Note: Yale LFIC is only available in GN, AT, SPA lever designs | TUB\* is only available in SFIC.

### Other Lever Trim Designs

●● Available in SFIC & LFIC



**AT**

●● Available in SFIC & LFIC



**SPA**

● Available in SFIC



**TUB**

●● Available in SFIC & LFIC  
*\*except YALE LFIC*



**AUG**

●● Available in SFIC & LFIC  
*\*except YALE LFIC*




**DAN**

●● Available in SFIC & LFIC  
*\*except YALE LFIC*



**LON**

●● Available in SFIC & LFIC  
*\*except YALE LFIC*



**TAC**



**8000K**

Anti-Microbial Coating available in US26D or US32D Only. Use part # "ANTB-TRIM" when ordering.

# Trim Selection

## RIGID LEVER ESCUTCHEON

### CONSTRUCTION

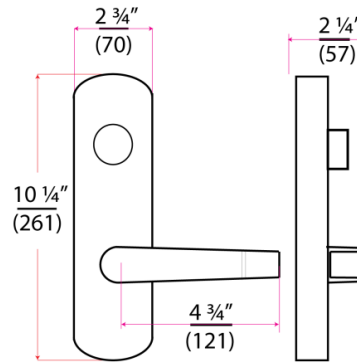
- Rigid, Non-Clutch Mechanism
- Double heavy duty spring support to prevent sagging and enhance operation
- Grade 1, thru-bolted design. Non-handed design.
- Hardened steel heavy duty tailpiece. Available for fire and non-fire rated rim and vertical rod exit devices
- Standard 6-Pin Schlage "C" Mortise Cylinder included

### DOOR THICKNESS

Standard 1 3/4". For 2 1/4" thick door use additional Part # TAIL3

### ESCUTCHEON DIMENSIONS

2 3/4" width x 10 1/4" length. Lever length: 4 3/4". Fits and covers 2 1/8" 161 cutout



Anti-Microbial Coating available in US26D Only. Use part # "ANTB-TRIM" when ordering.

### Lever Trim Designs



**ESC7700 or ICESC7700 or ICSCESC7700**

**ENTRANCE**  
Rigid Entrance, key locks or unlocks escutcheon trim ANSI Function (08) Operates as classroom function

**ESC7705 or ICESC7705 or ICSCESC7705**

**STOREROOM**  
Rigid Storeroom, key unlocks lever, lever retracts latch bolt, otherwise always locked ANSI Function (09)

**ESC7730**

**PASSAGE**  
Trim always operable and free ANSI Function (14)

**ESC7740**

**DUMMY**  
Dummy Escutcheon trim ANSI Function (02)

**TO ORDER** other lever design insert "AT", "RL", "TUB", "LON", or "TAC" before "ESC": e.g. **ATEESC7700** for ESC7700 with AT design.

**KEYWAY:** 6-Pin solid brass "C" keyway Mortise Cylinder standard. Optional: Schlage E, Schlage C-K, Russwin D1-2-3-4, Corbin 59/60, Sargent LA-LB-LC, Falcon/Weiser E, Arrow A, Yale 8, Yale GA and Kwikset. Can also accept Medeco, Assa, Kaba and *Cal-Royal HSK* High Security Cylinders.

**FOR ELECTRIFIED TRIM OPTIONS SEE PAGE 12**

- **(IC) INTERCHANGEABLE CORE:** Interchangeable Core locks will accept compatible 6 or 7-Pin cores with BEST, FALCON and ARROW
- **(ICSC) INTERCHANGEABLE CORE:** Indicates function available with **Schlage Full Size Format** Interchangeable Core. Corbin, Sargent and Yale format also available.

# Trim Selection



## HEAVY DUTY STAINLESS STEEL CLUTCH LEVER ESCUTCHEON (High Frequency Abusive Situation such as Schools, Hospitals, Industrial / Institutional)

### CONSTRUCTION

- Clutch mechanism
- Double heavy duty spring support to prevent sagging and enhance operation
- Grade 1, thru-bolted design. Non-handed design.
- All Stainless Steel heavy duty tailpiece.  
Available for fire and non-fire rated rim and vertical rod exit devices
- Standard 6-Pin Schlage "C" Mortise Cylinder included

### DOOR THICKNESS

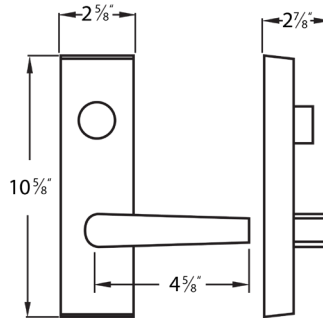
Standard 1 3/4" to 2".

For 2" or 2 1/2" thick door use additional Part # TAIL9

### ESCUTCHEON DIMENSIONS

2 5/8" width x 10 5/8" length. Lever length: 4 5/8".

Fits and covers 2 1/8" 161 cutout



### Lever Trim Designs



HDESC



TS



RL

#### HDESC-00 or

• ICHDESC-00

• ICSCHDESC-00

#### HDTSESC-00

• ICHDTSESC-00

• ICSCHDTSESC-00

#### ENTRANCE

Clutch Entrance, key locks or unlocks escutcheon trim.

ANSI Function (08)

Operates as classroom function

#### HDESC-05 or

• ICHDESC-05

• ICSCHDESC-05

#### HDTSESC-05

• ICHDTSESC-05

• ICSCHDTSESC-05

#### STOREROOM

Clutch Storeroom, key unlocks lever, lever retracts latch bolt, otherwise always locked. ANSI Function (09)

#### HDESC-30

HDTSESC-30

#### PASSAGE

Trim always operable and free

ANSI Function (14)

#### HDESC-40

HDTSESC-40

#### DUMMY

Dummy Escutcheon trim

ANSI Function (02)

TO ORDER RL lever design, add "RL" after "HD" when ordering.

e.g. HDRLESC-00 for HDESC-00 with RL design.

**KEYWAY:** 6-Pin solid brass "C" keyway Mortise Cylinder standard. Optional: Schlage E, Schlage C-K, Russwin D1-2-3-4, Corbin 59/60, Sargent LA-LB-LC, Falcon/Weiser E, Arrow A, Yale 8, Yale GA and Kwikset. Can also accept Medeco, Assa, Kaba and Cal-Royal HSK High Security Cylinders.

• (IC) **INTERCHANGEABLE CORE:** Interchangeable Core locks will accept compatible 6 or 7-Pin cores with BEST, FALCON and ARROW

• (ICSC) **INTERCHANGEABLE CORE:** Indicates function available with Schlage Full Size Format Interchangeable Core. Corbin, Sargent and Yale format also available.

Anti-Microbial Coating available in US32D Only. Use part # "ANTB-TRIM" when ordering.

**FOR ELECTRIFICATION OPTION:  
SPECIFY ITEM # UPON ORDERING**  
**TO ORDER "RL" OR "TS" LEVER DESIGN,  
REPLACE "HD" WITH "RL" OR "TS".**

ITEM#	DESCRIPTION
FS12HD	FAIL-SAFE (FS) OPTION 12V AC / DC
FS24HD	FAIL-SAFE (FS) OPTION 24V AC / DC
FSE12HD	FAIL-SECURE (FSE) OPTION 12V AC / DC
FSE24HD	FAIL-SECURE (FSE) OPTION 24V AC / DC

# Trim Selection

## PULL DESIGN

- 7700 NL
- IC7700NL
- ICSC7700NL

### FOR RIM DEVICES ONLY

Outside by pull and key.  
Key retracts latch bolt.  
ANSI function (03)  
Covers 161 cutout

### KEYWAY

Standard 6-Pin solid brass "C" keyway Rim Cylinder included.

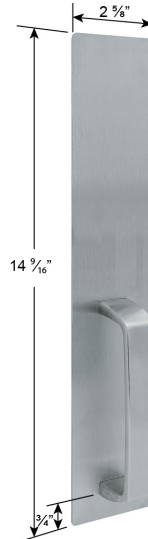
### FINISHES

Architectural plated finishes.



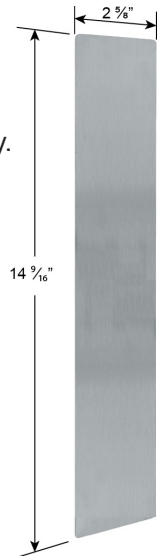
### 7700 DTP

Outside by pull only.  
Pull when dogged.  
ANSI function (02)  
Covers 161 cutout.



### 7700 EOP

Outside by plate only.  
ANSI function (01)  
Covers 161 cutout



- 77TP00 or
- IC77TP00
- ICSC77TP00

### ENTRANCE

Key locks or unlocks thumbpiece.  
(Operates as classroom function)  
ANSI Function (05)

- 77TP05 or
- IC77TP05
- ICSC77TP05

### STOREROOM

Key unlocks thumbpiece, thumbpiece retracts latch bolt, otherwise always locked.  
ANSI Function (06)

### 77TP30

### PASSAGE

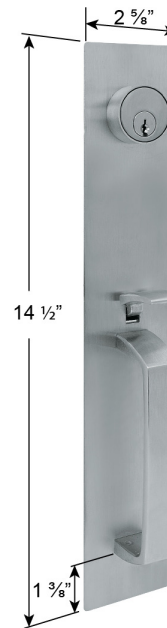
Trim always operable and free.  
ANSI Function (15)

### 77TP40

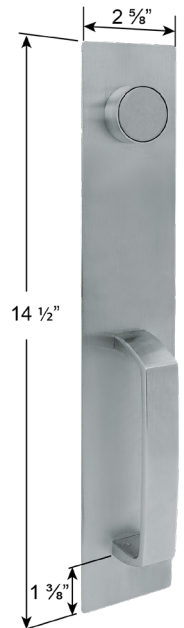
### DUMMY

Dummy trim. **Includes blank Mortise dummy cylinder.** One sided.  
ANSI Function (02)

### KEYED



### DUMMY



**KEYWAY:** 6-Pin solid brass "C" keyway Mortise Cylinder standard. Optional: Schlage E, Schlage C-K, Russwin D1-2-3-4, Corbin 59/60, Sargent LA-LB-LC, Falcon/Weiser E, Arrow A, Yale 8, Yale GA and Kwikset. Can also accept Medeco, Assa, Kaba and **Cal-Royal HSK** High Security Cylinders.

### ● (IC) INTERCHANGEABLE CORE

Interchangeable Core locks will accept compatible 6 or 7-Pin cores with BEST, FALCON and ARROW.

- (ICSC) INTERCHANGEABLE CORE: Indicates function available with **Schlage Full Size Format** Interchangeable Core. Corbin, Sargent and Yale format also available.

### FINISHES

Architectural plated finishes.

# Electrified Lever Trim



Cal-Royal's electrified lever trim provides remote locking and unlocking capabilities using industry safety standards. The solenoid can be energized from a distant controller, thus allowing access control of the opening. The control of stairwells in high-rise buildings is a common application for this trim, where electric pullback of the exit device's latch bolt is cost prohibitive or not required. This is especially practical in applications where fire/life safety codes require a "fail-safe" condition which is not an option with electrified latch pullback devices. Because the current draw is quite low there is no need for a more expensive power supply to provide the surge current.

## Features

- Continuous duty solenoids used to insure trouble-free operation
- Internally mounted solenoid to ease installation  
(no special door prep required)
- No Hassle 3-year Warranty

Anti-Microbial Coating available in US26D Only. Use part # **"ANTB-TRIM"** when ordering.

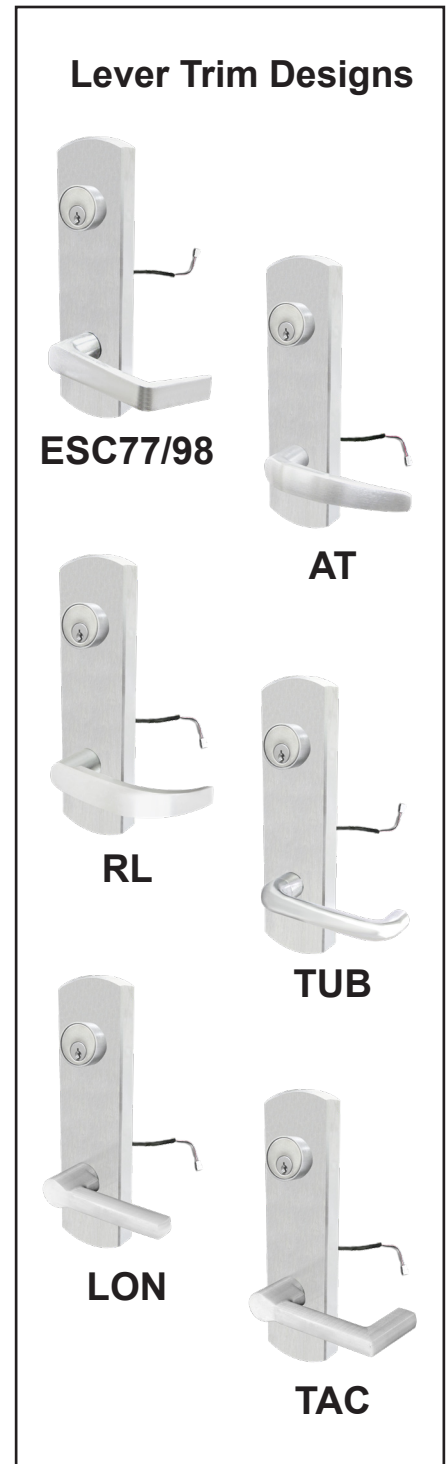
## Specifications

Solenoid..... Continuous Duty  
 Operating Voltage.... 11-30VDC / 10-24VAC  
 Amperage..... 330mA @ 11V or 140mA @ 30V  
 Coil Resistance..... 8.2 Ω  
 Function..... available Fail Safe, Electrically Locked (**EL**) or Fail Secure, Electrically Unlocked (**EU**)

ITEM#	DESCRIPTION
ESC77/98-EL ● ICESC77/98-EL ● ICSCESC77/98-EL	<b>EL</b> (Electrically Locked, Fail Safe), Voltage: 11-30VDC / 10-24VAC
ESC77/98-EU ● ICESC77/98-EU ● ICSCESC77/98-EU	<b>EU</b> (Electrically Unlocked, Fail Secure), Voltage: 11-30VDC / 10-24VAC

**TO ORDER** other design, Insert: "AT", "RL", "TUB", "LON", or "TAC" before "ESC77/98". e.g. **ATESC77/98-EL** for ESC77/98-EL in AT design

- (IC) **INTERCHANGEABLE CORE:** Interchangeable Core locks will accept compatible 6 or 7-Pin cores with BEST, FALCON and ARROW
- (ICSC) **INTERCHANGEABLE CORE:** Indicates function available with **Schlage Full Size Format** Interchangeable Core. Corbin, Sargent and Yale format also available.





# (ELR) Electric Latch Retraction



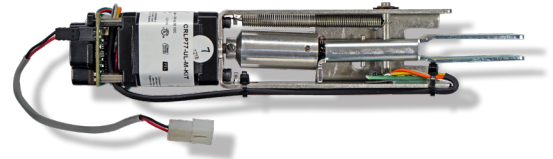
Our motor driven electrified latch pullback exit device allows for remote keyless access control in high occupancy / high traffic conditions where exit devices are required. Common applications include conditions such as hospitals, airports, schools, churches and they are commonly specified in applications that require automatic door openers. The device may be continuously energized allowing for a push / pull condition if desired.

## Features:

- Available on 7700 Series, including rim, vertical rod, concealed vertical rod, mortise exit device, fire and non fire-rated devices
- MM4S Smart Module: On board diagnostics with audible feedback for adjustment and power issues
- “PTS” (Push to Set Technology): 5 second electronic adjustment for easy post installation adjustment
- Electric dogging rated for continuous duty - Auto retraction if dogged push pad is pulled from position
- Low Current Draw - Field switchable to “High Torque” mode
- Up to 300’ wire run with (2) 18ga wire - Long wire runs provides installer with convenience of placing the locking device power supply in a centralized location; i.e. the same closet as the access panel
- 8’ cable with Quick Connect for MM4S module to easily connect to power supply lead
- 3-year “No Hassle” warranty

## Specifications:

- Voltage – 22 to 28V DC
- System protection – unit shutdown when voltage exceeds 28V DC
- Average In-rush Current – 900mA; Average Hold Current - 215mA
- PTS adjustment – approx. ¼”
- Wire run: 300’ with 18ga wire



**INSTALLED ON THE EXIT  
DEVICE: USE FLR7700 ADD**

**FOR FIELD INSTALLATION  
USE FLR7700 KIT**

## To Order:

- **Must Specify: Exit Device item #** and **FLR7700 ADD** as two separate line items.  
For Example: A7700EO36 US32D with ELR option, order “**A7700EO36 US32D**”, and “**FLR7700 ADD**” as two line items.
- **\*Use FLR7700 KIT if ordered separately.**
- **Optional Switch (RX or LX)** is also available and should be added as a **3<sup>rd</sup> line item** as needed.

**Note:** When using electrified hinge, you must use prefix ELELRn + hinge item code, where “n” is equal to number of wires. For example: ELELR4 + BB31.

**MUST USE CRP POWER SUPPLIES TO HONOR WARRANTY (see pages 95-96)**

## Signal Switch RX and LX

**RX** (request to exit) signal switch is used to signal the use of an opening from the push side. When the push pad is depressed, the switch is activated. These devices are equipped with an internal SPDT (single pole double throw) switch that monitors the touch bar.

**LX** (latch bolt monitoring) signal switch monitors both egress and access of an opening. When the latch bolt is retracted, the switch is activated. These devices are equipped with an internal SPDT (single pole double throw) switch that monitors the latch bolt position.

**LX** and **RX** switches can be combined.

**LX, RX** switches can be used in combination with ELR (electric latch retraction) option.

## Specifications

**RX** or **LX**.....Switch rated 0.5 amps @ 24V AC / DC resistive  
Low current **RX** or **LX**.Switch rated 0.5 amps @ 24V AC / DC resistive

## for Factory Installed. To Order, Specify:

- RX7700**.....Request to Exit switch for field installation
- LX7700**.....Latch bolt Monitoring switch for field installation
- LXR7700**.....Latch bolt Monitoring / Request to Exit Combination

# Heavy Duty Digital Exit Trims



## MECHANICAL CRCODE101

### Features

- Heavy Duty
- Designed for 7700 and 9800 Series Grade 1 Rim and Surface Vertical Rod Type Exit Devices
- Single Code (up to 8000 code combinations)
- Weather-Resistant finish
- Code can be changed anytime without dismounting
- Full size, Non-Handed
- Easy Installation

## ELECTRONIC CRCODE007

### Features

- Dual mode for code free entry either mechanically by key or electronically thru the keypad
- Designed for 7700 and 9800 Series Rim Exit Devices
- Can store up to 90 different numeric user codes in 4, 5 or 6 digits
- Settings remain in memory when batteries are removed
- Audible alarm sounds after 3 incorrect attempts
- Connections available for remote release switch and automatic lock activation when linked to Fire alarm system
- Can be used as STOREROOM or CLASSROOM function
- Factory default set as STOREROOM function
- Fast and easy programming via master code
- Comes standard with 2 levers (for LH or RH handing)

## CR5000 TRILOGY® KEYLESS EXIT TRIM

### Features

- Clutch mechanism insures long life and durability
- Fingertip and / or Windows programmable
- 2000 User Codes: Master, manager, supervisor and users
- Real Time Clock for up to 40,000 Event Time / Date-Stamped Audit Trail
- Up to 500 Lock / Unlock Schedules (with Time Zone Support)
- Rugged 12-Button Metal Keypad
- Adaptable to most major manufacturers of standard RIM and IC RIM Cylinders
- Battery operated; uses 5 AA batteries
- Optional Interchangeable C ore available with Best, Falcon & Arrow
- Non-Handed; Fully Reversible

## MECHANICAL CRCODE204

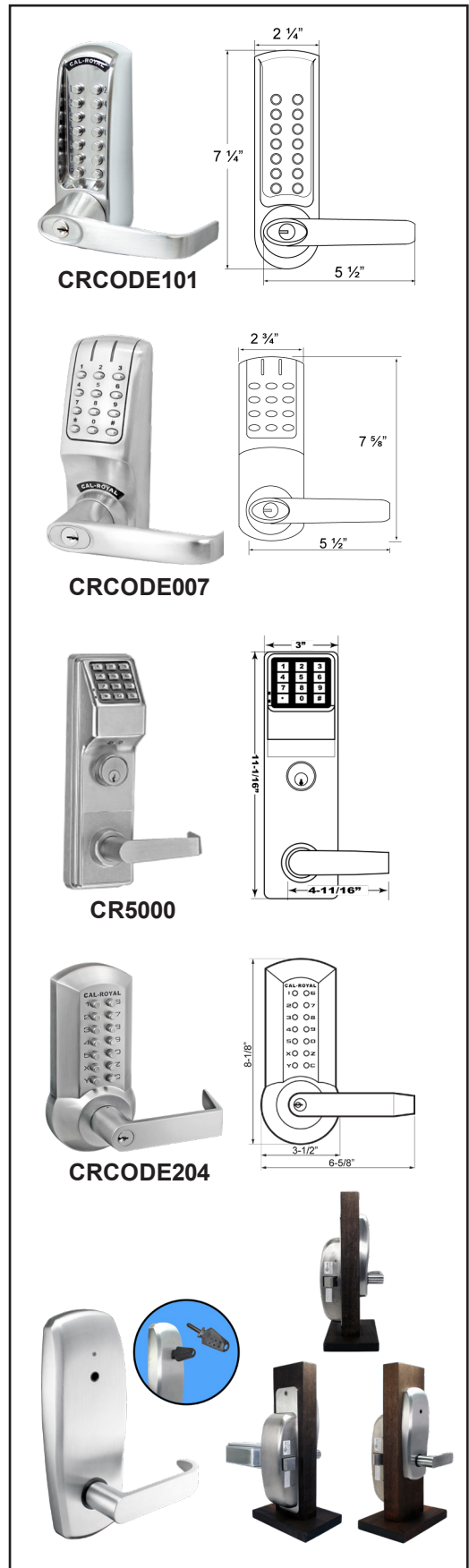
### Features

- Breakaway Lever Design
- Easy On-Door Code Change
- Weather Resistant
- Code-Free Option (Passage)
- 1 - 12 digit Length Code
- Thousands of Possible Code Combinations
- Single Code User
- Applications: Offices, Schools, Hospitals, Apartments, Hotels / Motels, Residential, Commerical and Public Buildings
- Door Thickness: 1 3/4" - 2"
- Non-Handed, Reversible

## KABA® - Cal-Royal Combination

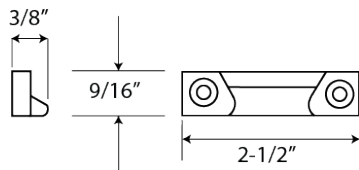
Cal-Royal's Exit hardware devices combined with Kaba InSync CP provide a variety of alternatives when addressing community access control. Recommended for applications such as controlling building entry openings, common area rooms and doors with exit devices. InSync CP are available as stand-alone battery operated door locks designed to work in conjunction with Cal-Royal's Exit Hardware Devices.

**KABA InSync CP is not sold through CAL-ROYAL.** For inquiries and information on InSync line of products please visit [www.kabamultihousing.com](http://www.kabamultihousing.com)



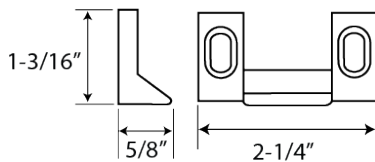
# Strikes & Accessories

## Strikes for use with A7760V Vertical Rod Exit Device All strikes are black nylon coated



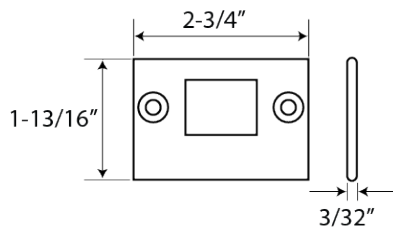
### 221

Standard for A7760V. Applied to surface of floor or to a flat threshold. Standard packaging.



### 227

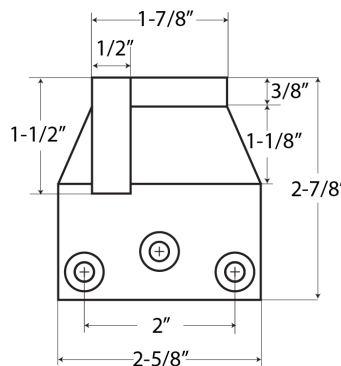
Applied to surface of stop. No mortise required. Standard packaging.



### 233

Bottom strike. Alternate bottom strike. Flush mounting stainless steel. Furnished with expansion shields. Requires mortise in the floor.

## Overlapping Strikes



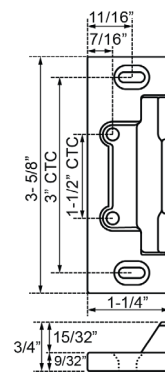
### 951

Surface applied. Used on inactive leaf for device on active leaf of pair of doors without mullion.

## Additional Rods

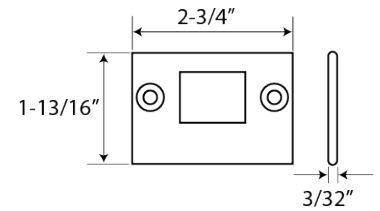
Vertical rod for 10 feet high doors available on non-fire rated vertical rod devices only. Use Part # VRRD10.

## Strikes for use with A7760V Vertical Rod Fire Exit Device



### 245

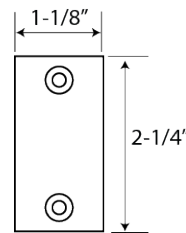
Surface applied for F7760. Standard packaging.



### 233

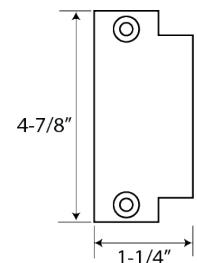
Bottom strike for F7760. Flush mounting stainless steel. Furnished with expansion shields. Requires mortise in the floor. Standard packaging.

## Additional Accessories



### LFF

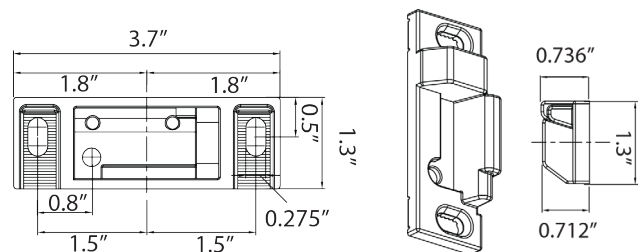
Lock front filler



### SF

Strike filler

## Strikes for use with A7700 Rim Type Exit Device



### 938

for A7700 surface applied. Standard packaging.

## GLASS BEAD SHIM KITS

**901** – For rim type, 1/8" thick

**906** – For vertical type, 1/8" thick

**912** – For fire rated type, 1/8" thick

