

77GLS-SVR & F77GLS-SVR Series



GRADE 1 Surface Vertical Type, Narrow Stile Exit Device
Optional Less Bottom Rod (LBR)



LIFETIME WARRANTY	BHMA™ CERTIFIED Be Safe. Be Secure. Look for the Mark.	MEETS <i>The Buy American Act</i>	UL US LISTED FIRE EXIT HARDWARE	UL US LISTED PANIC & SAFETY	ADA COMPLIANT
--------------------------	--	---	---	---------------------------------------	----------------------

Specifications

For Doors	Wood, Metal or Aluminum Glass doors with 1 3/4" minimum stile width
Top & Bottom Chassis	Steel Material
Chassis Cover	Zinc Material
Mounting	Furnished standard with wood and machine screws
End Cap	Aluminum Material

***Americans with Disability Act (ADA) compliant
5 lbs opening force on ADA Series only**

***Refer to the Price List for Stock Sizes and Finishes**

Alarm	Available for 36" bar only. Use PART# N48ALRM77
Hand	Handed. Easily field reversible. Specify at time of order LHR or RHR for convenience
ANSI Standard	A156.3, Grade 1
Rail Assembly	Aluminum Material
Strike	N-260 & N-265 (Steel), 233 (Stainless Steel); Optional N-221 Bottom Strike (Brass)
Dogging Feature	Allen-type key furnished standard. Cylinder Dogging kit available for 36" bar only. Use PART# 48CD7700
UL and ULC Listed	77GLS-SVR Series for Panic & Safety, F77GLS-SVR Series for Fire Exit hardware for all types of 4' x 8' single doors and 8' x 10' double doors for up to 3 hour fire labeled installations. Conforms to ANSI/UL 10C, ANSI/UL 305 standards.
Electronic Functions.....	ELR (Electrified Latch Retraction) available for both 36" and 48" push bar. DE (Delayed Egress) available for 36" bar only. Use PART# DEKIT48
Anti-Microbial Coating.....	Available on US32D only. Use part # ANTB-EXIT

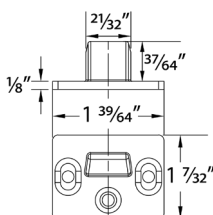
DIMENSIONS

Push rail height to finished floor	41" (1041 mm) at center
Push rail projection	
Neutral	3 9/8" (92 mm)
Depressed	2 7/8" (73 mm)
Center case	8" x 3" x 2 3/8" (203 mm x 76 mm x 60 mm)
Panic and Fire grade top & bottom latch case	4 11/16" x 1 7/8" x 1 1/8" (119 mm x 47 mm x 28 mm)
Top and bottom rod length for 36" x 84" doors	Top rod 35 1/4" (895 mm), bottom rod 34 1/4" (870 mm)
Top and bottom rod length for 48" x 96" doors	Top rod 47 1/4" (1200 mm), bottom rod 34 1/4" (870 mm)
Vertical Rods	1/2" (13mm)

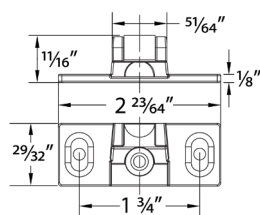
NOTES:

- 77GLS-SVR & N-F77GLS-SVR Exit Devices are intended for use with Narrow Stile applications
- If used for Regular Door/Frames, must cut down device to size, and follow installation for regular door/frame applications.
- Auxiliary Fire Latch is standard for both fire rated F77GLS-SVR & LBRF77GLS-SVR Exit Devices

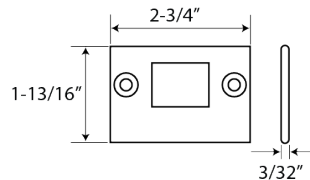
MODEL	ACTUAL SIZE	MAXIMUM CUT DOWN	DOOR SIZE
77GLS-SVR-3684, F77GLS-SVR-3684	35"	10"	26" to 36" door width
77GLS-SVR-4896, F77GLS-SVR-4896	46 3/4"	13"	35" to 48" door width



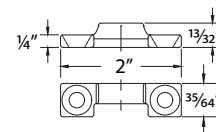
N-260 TOP STRIKE



N-265 BOTTOM STRIKE



233 BOTTOM STRIKE



N-221 BOTTOM STRIKE