

98GLS-SVR & F98GLS-SVR Series



GRADE 1 Surface Vertical Type, Narrow Stile Exit Device
Optional Less Bottom Rod (LBR)

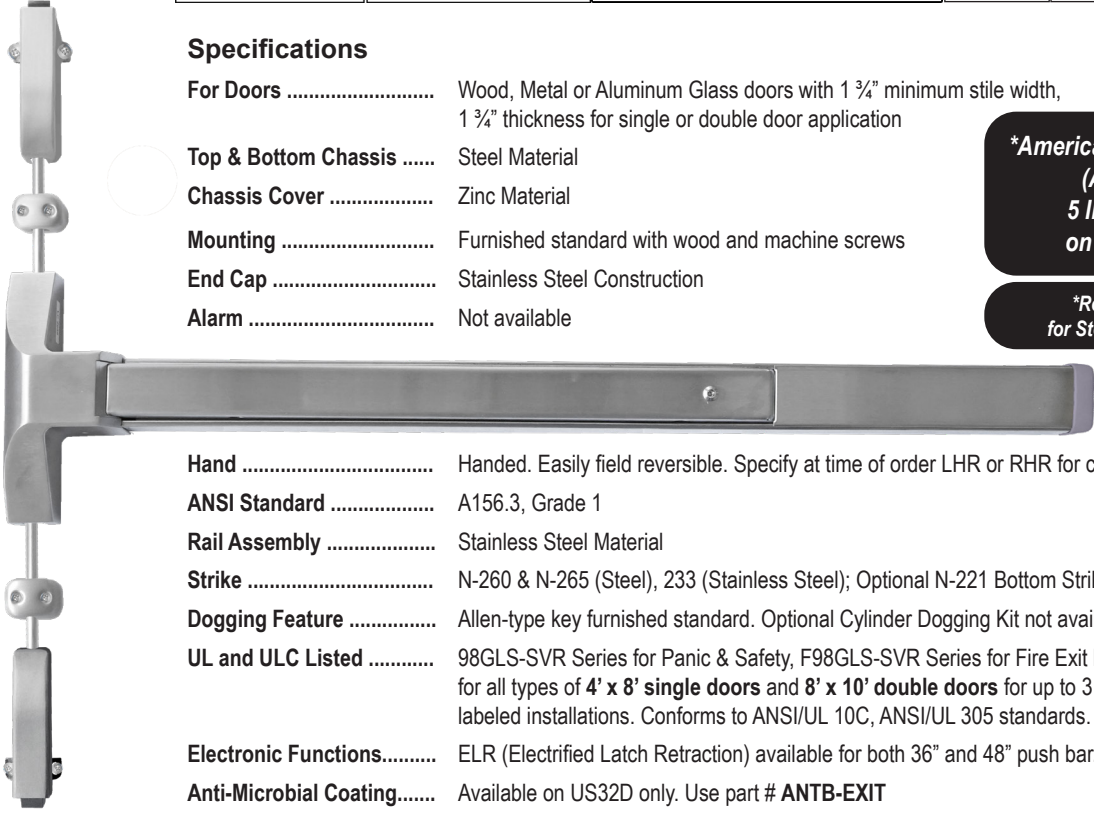
LIFETIME WARRANTY	BHMA CERTIFIED Be Safe. Be Secure. Look for the Mark.	MEETS The Buy American Act	UL US LISTED FIRE EXIT HARDWARE	UL US LISTED PANIC & SAFETY	ADA COMPLIANT
--------------------------	--	--------------------------------------	---	---------------------------------------	----------------------

Specifications

For Doors	Wood, Metal or Aluminum Glass doors with 1 3/4" minimum stile width, 1 3/4" thickness for single or double door application
Top & Bottom Chassis	Steel Material
Chassis Cover	Zinc Material
Mounting	Furnished standard with wood and machine screws
End Cap	Stainless Steel Construction
Alarm	Not available

***Americans with Disability Act (ADA) compliant**
5 lbs opening force on ADA Series only

***Refer to the Price List for Stock Sizes and Finishes**



Hand	Handed. Easily field reversible. Specify at time of order LHR or RHR for convenience
ANSI Standard	A156.3, Grade 1
Rail Assembly	Stainless Steel Material
Strike	N-260 & N-265 (Steel), 233 (Stainless Steel); Optional N-221 Bottom Strike (Brass)
Dogging Feature	Allen-type key furnished standard. Optional Cylinder Dogging Kit not available.
UL and ULC Listed	98GLS-SVR Series for Panic & Safety, F98GLS-SVR Series for Fire Exit hardware for all types of 4' x 8' single doors and 8' x 10' double doors for up to 3 hour fire labeled installations. Conforms to ANSI/UL 10C, ANSI/UL 305 standards.
Electronic Functions.....	ELR (Electrified Latch Retraction) available for both 36" and 48" push bar.
Anti-Microbial Coating.....	Available on US32D only. Use part # ANTB-EXIT

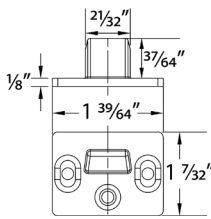
DIMENSIONS

Push rail height to finished floor	41" (1041 mm) at center
Push rail projection	
Neutral	2 1/2" (64 mm)
Depressed	1 3/4" (45 mm)
Center case	8" x 3" x 2 3/8" (203 mm x 76 mm x 60 mm)
Panic and Fire grade top & bottom latch case	4 11/16" x 1 7/8" x 1 1/8" (119 mm x 47 mm x 28 mm)
Fire grade top & bottom latch case	4 11/16" x 1 7/8" x 1 1/8" (119 mm x 47 mm x 28 mm)
Top and bottom rod length for 36" x 84" doors	Top rod 35 1/4" (895 mm), bottom rod 34 1/4" (870 mm)
Top and bottom rod length for 48" x 96" doors	Top rod 47 1/4" (1200 mm), bottom rod 34 1/4" (870 mm)
Vertical Rods	1/2" (13mm)

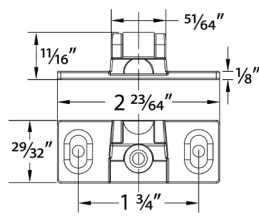
NOTES:

- 98GLS-SVR & N-F98GLS-SVR Exit Devices are intended for use with Narrow Stile applications
- If used for Regular Door/Frames, must cut down device to size, and follow installation for regular door/frame applications.
- Auxiliary Fire Latch is standard for both fire rated F98GLS-SVR & LBRF98GLS-SVR Exit Devices

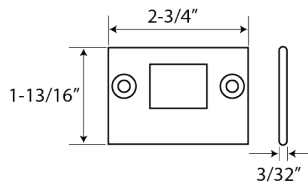
MODEL	ACTUAL SIZE	MAXIMUM CUT DOWN	DOOR SIZE
98GLS-SVR-3684, F98GLS-SVR-3684	35"	10"	27" to 36" door width
98GLS-SVR-4896, F98GLS-SVR-4896	47"	15"	33" to 48" door width



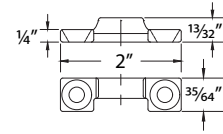
N-260 TOP STRIKE



N-265 BOTTOM STRIKE



233 BOTTOM STRIKE



N-221 BOTTOM STRIKE