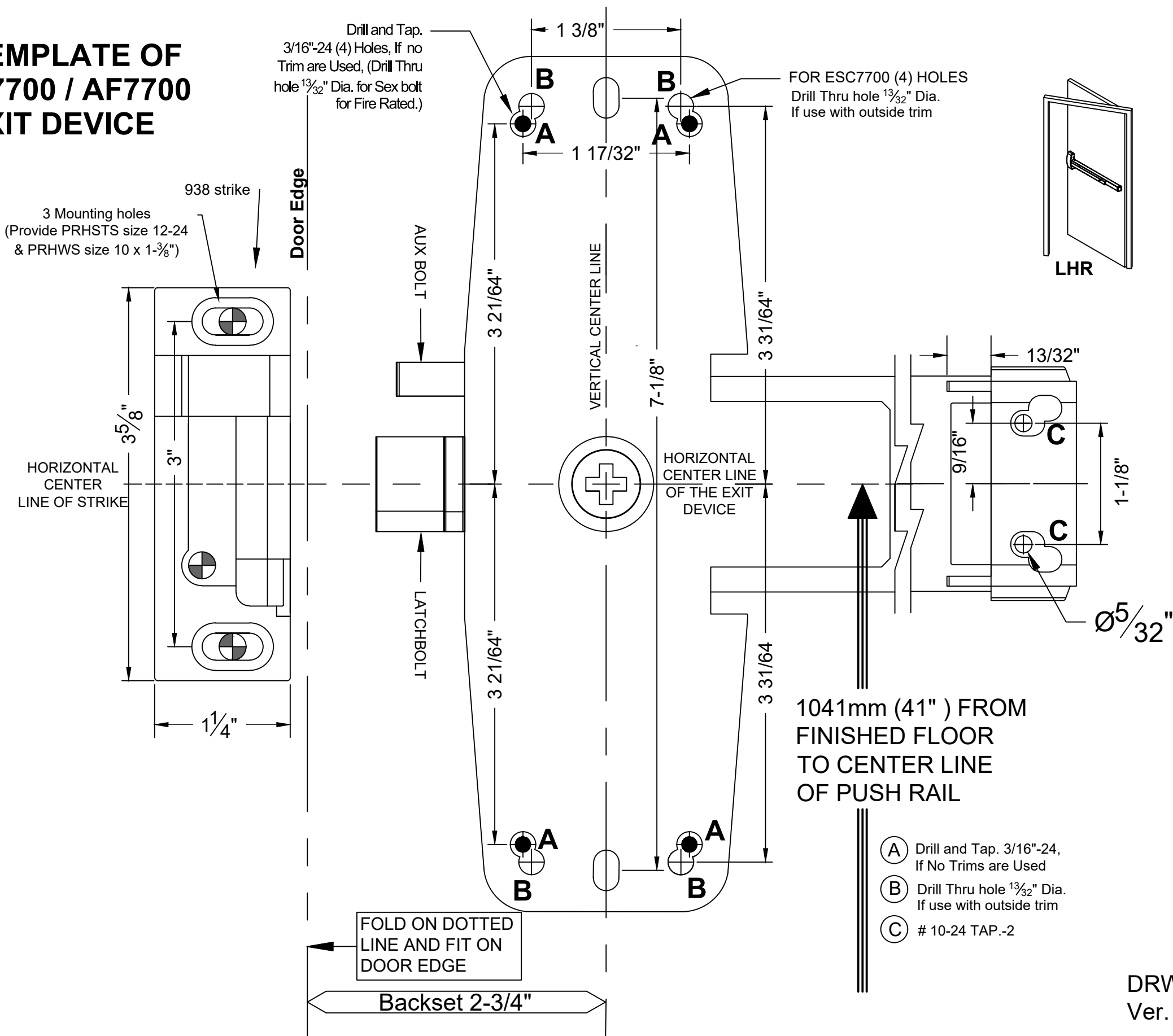
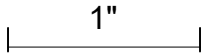




TEMPLATE OF  
A7700 / AF7700  
EXIT DEVICE



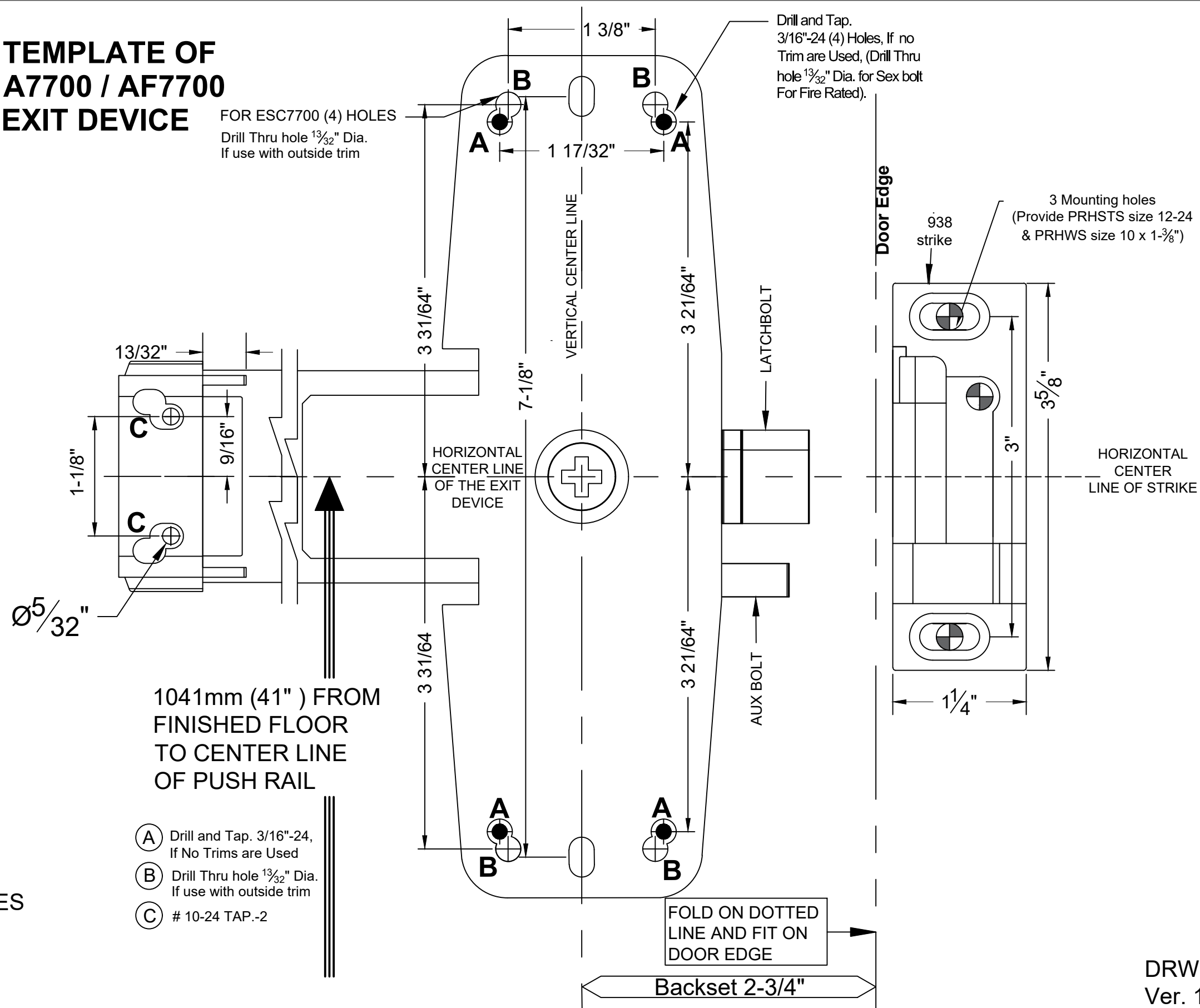
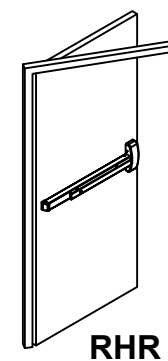
UNIT DIMENSION: INCHES  
Scale: 1:1 (If Print Actual)



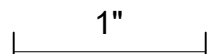
- (A) Drill and Tap. 3/16"-24, If No Trims are Used
- (B) Drill Thru hole  $\frac{13}{32}$ " Dia. If use with outside trim
- (C) # 10-24 TAP.-2



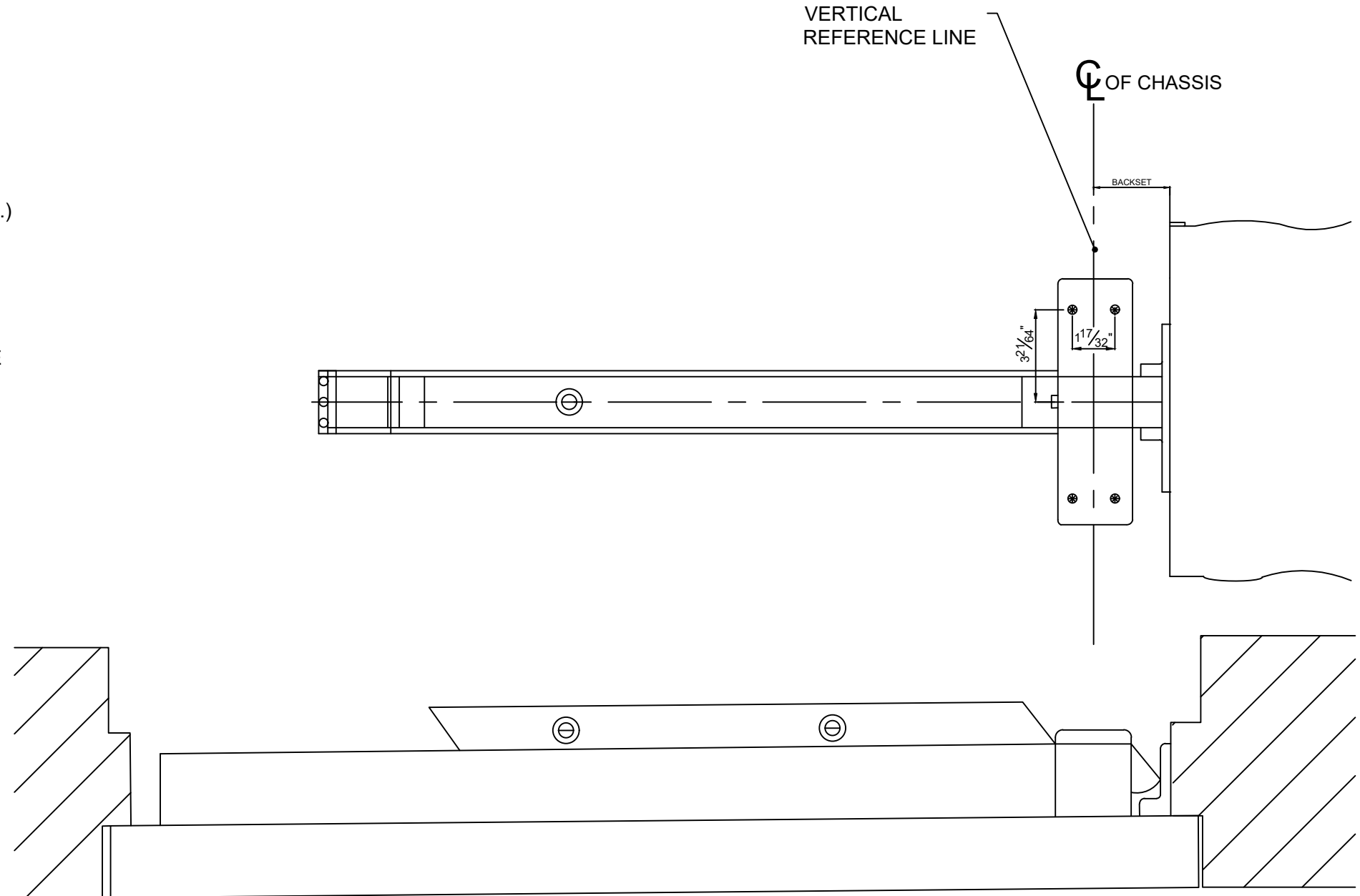
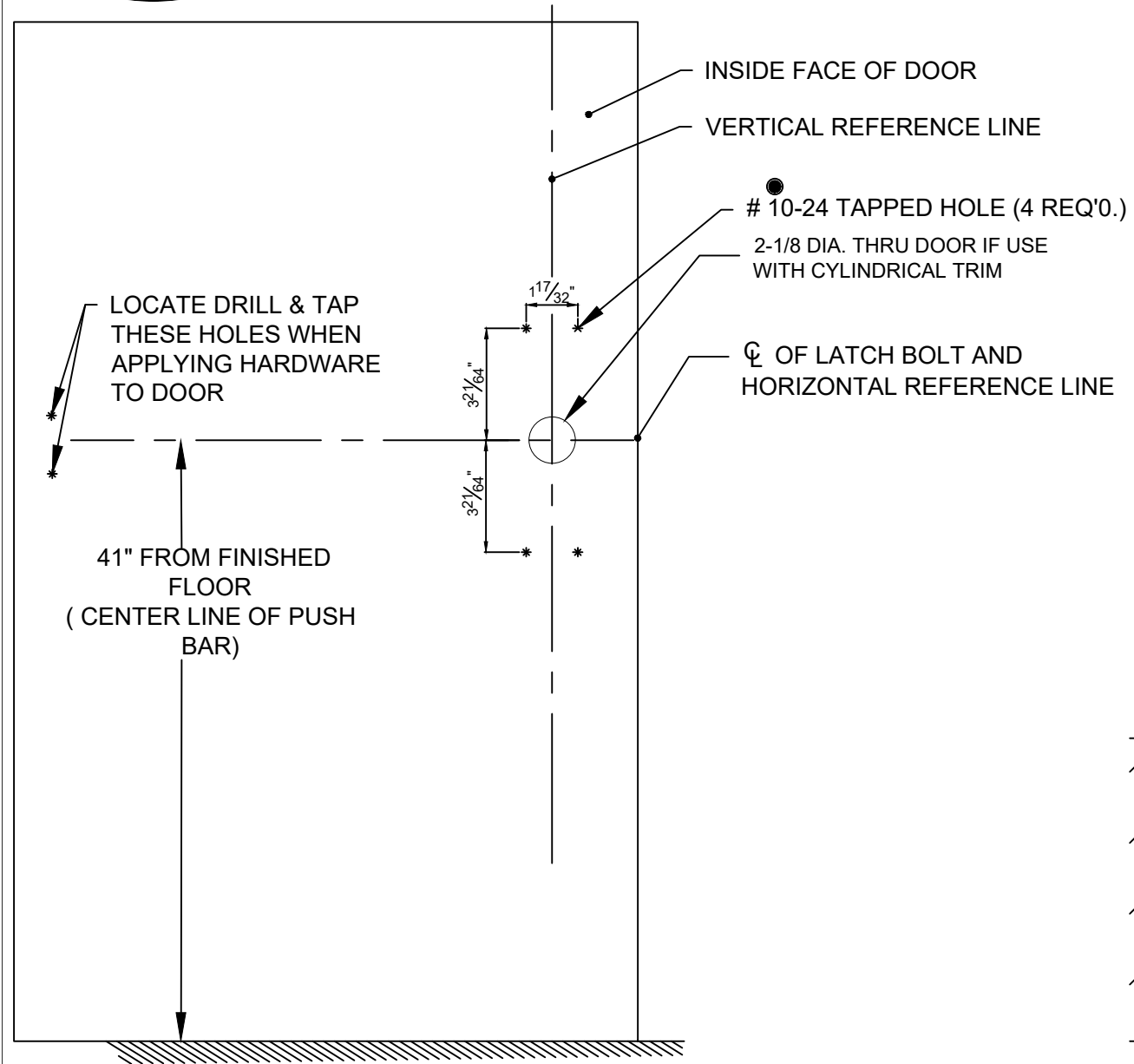
Drill and Tap.  
3/16"-24 (4) Holes, If no  
Trim are Used, (Drill Thru  
hole  $1\frac{3}{32}$ " Dia. for Sex bolt  
For Fire Rated).



UNIT DIMENSION: INCHES  
Scale: 1:1 (If Print Actual)



DRWG.# EDT-4008B-12/24-2of3  
Ver. 1.01



- ① SURFACE OF DOOR WHERE EXIT DEVICE IS TO BE APPLIED MUST BE FLUSH
- ② SEE MASTER SHEET FOR AREAS REQUIRING REINFORCEMENTS
- ③ WE RECOMMEND THAT ALL TAPPED HOLES BE DRILLED & TAPPED IN FIELD
- ④ TOLERANCE ON ALL DIMENSION  $\pm 1/64$ "

NOTE: Not To Scale

DRWG. # EDT-4008C-12/24-3of3  
Ver.1.01