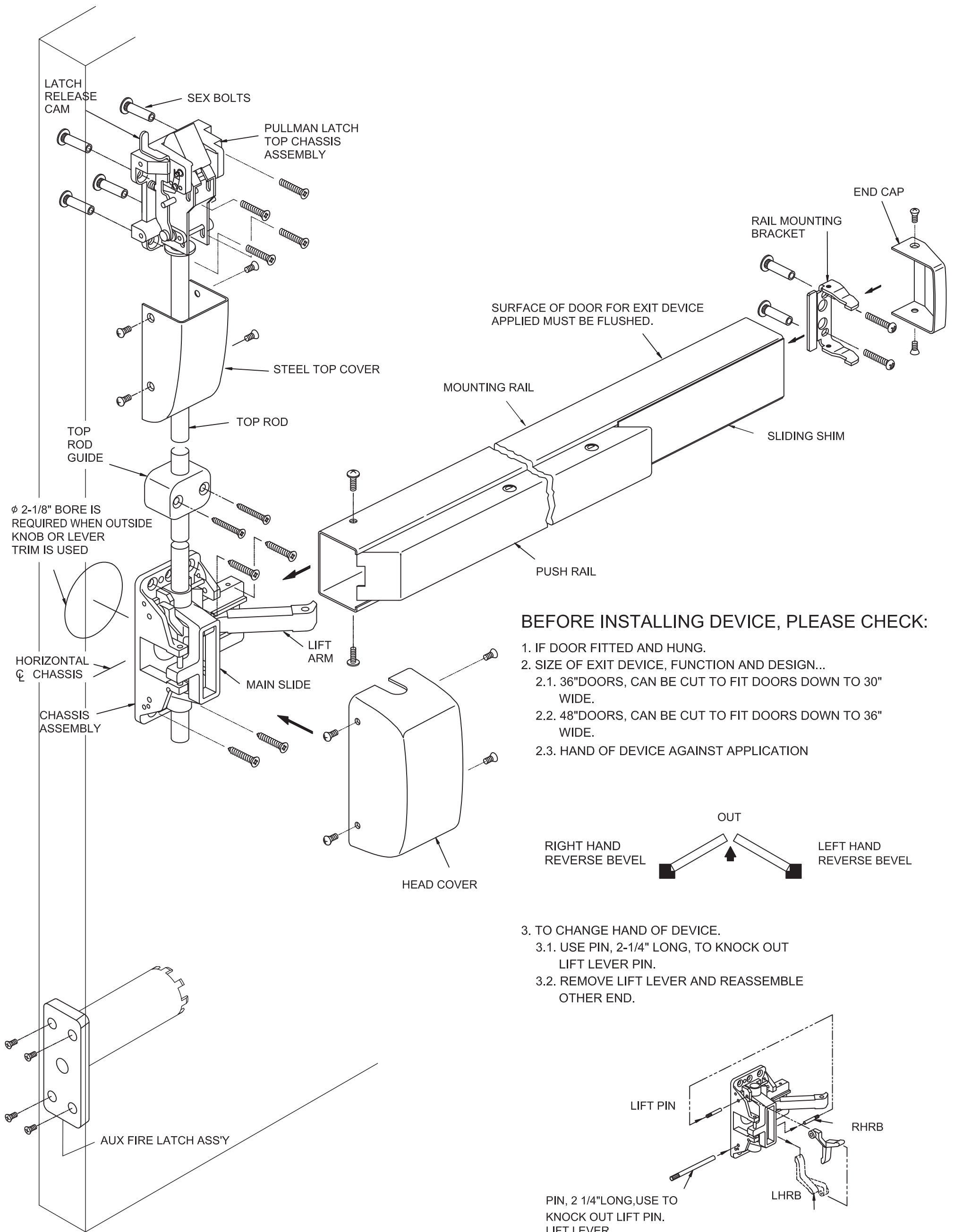


INSTALLATION INSTRUCTION for ALBRF2260V SERIES FIRE VERTICAL ROD EXIT DEVICE, LESS Bottom Rod WITH Aux Fire Latch ass'y

NOTE: ALL FIRE RATED APPLICATION ARE REQUIRED TO USE THE SEX BOLTS.

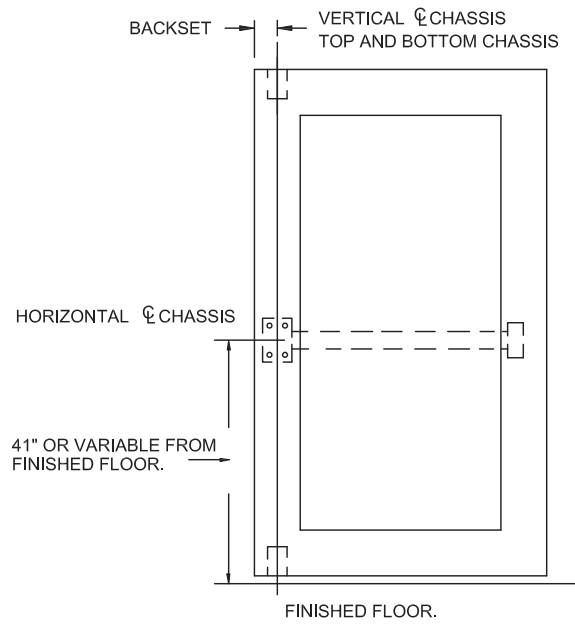


NOTE: ALL FIRE RATED APPLICATION ARE REQUIRED TO USE THE SEX BOLTS.

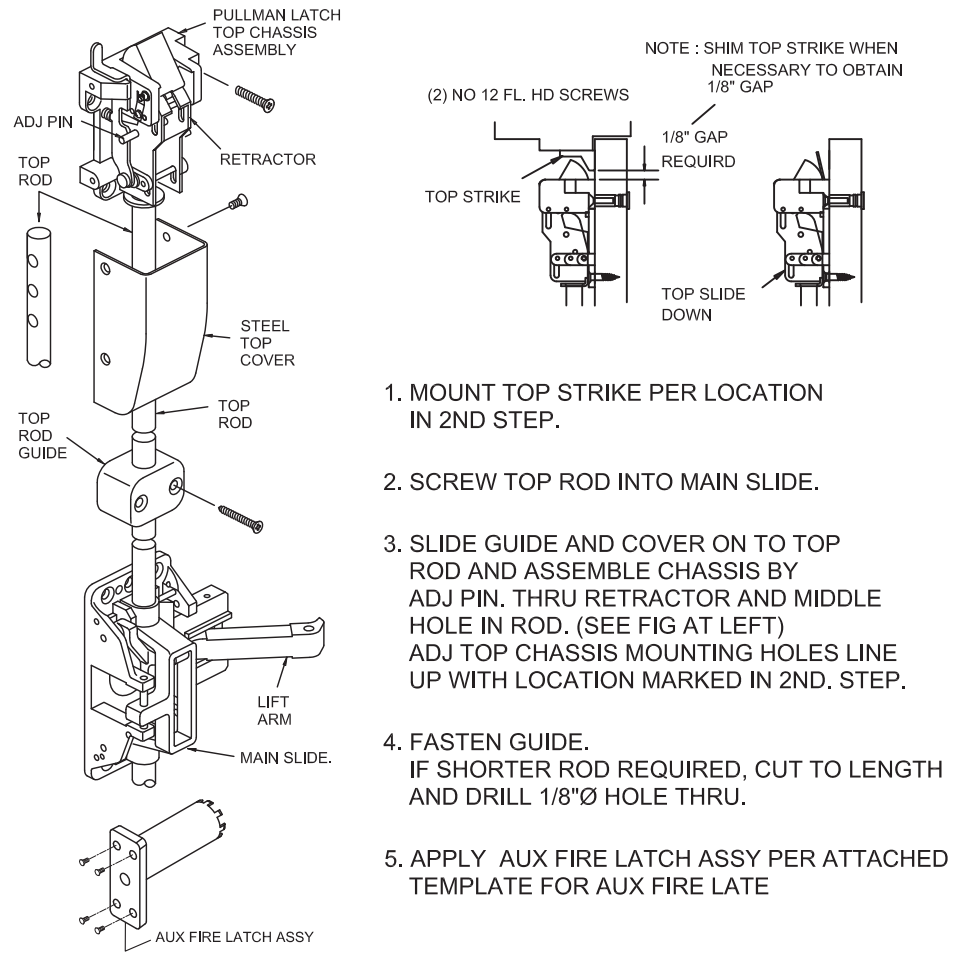
1. MARK VERTICAL AND HORIZONTAL REFERENCE LINE ON DOOR.

DETERMINE BACKSET TO LOCATE VERTICAL REFERENCE LINE.

1. IF LOCK STILE IS 4 1/2" WIDE OR WIDER, BACKSET IS 2 3/4".
2. IF LOCK STILE IS LESS THAN 4 1/2" WIDE, BACKSET IS HALF OF THE EXPOSED WIDTH OF LOCK STILE.



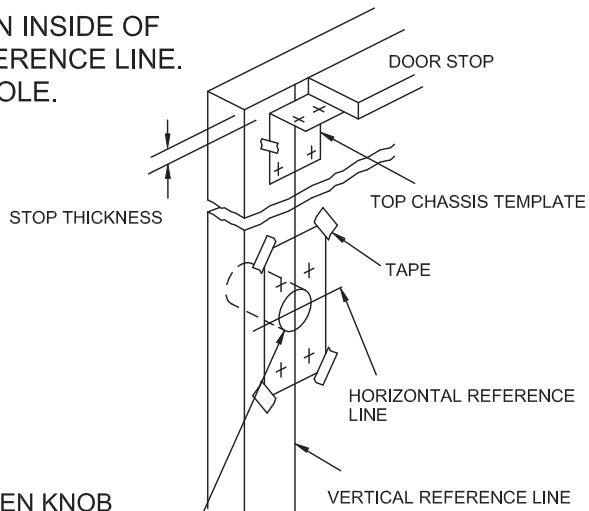
4. ATTACH TOP AND BOTTOM CHASSIS



1. MOUNT TOP STRIKE PER LOCATION IN 2ND STEP.
2. SCREW TOP ROD INTO MAIN SLIDE.
3. SLIDE GUIDE AND COVER ON TO TOP ROD AND ASSEMBLE CHASSIS BY ADJ PIN. THRU RETRACTOR AND MIDDLE HOLE IN ROD. (SEE FIG AT LEFT) ADJ TOP CHASSIS MOUNTING HOLES LINE UP WITH LOCATION MARKED IN 2ND. STEP.
4. FASTEN GUIDE. IF SHORTER ROD REQUIRED, CUT TO LENGTH AND DRILL 1/8"Ø HOLE THRU.
5. APPLY AUX FIRE LATCH ASSY PER ATTACHED TEMPLATE FOR AUX FIRE LATE

2. PREPARE DOOR

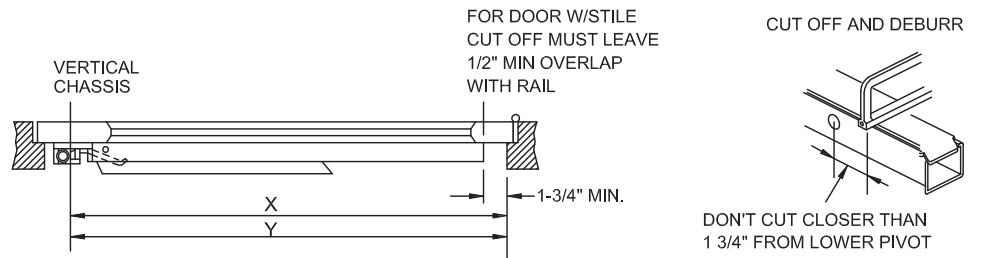
TAPE TEMPLATE ON INSIDE OF DOOR ALONG REFERENCE LINE. SPOT AND DRILL HOLE.



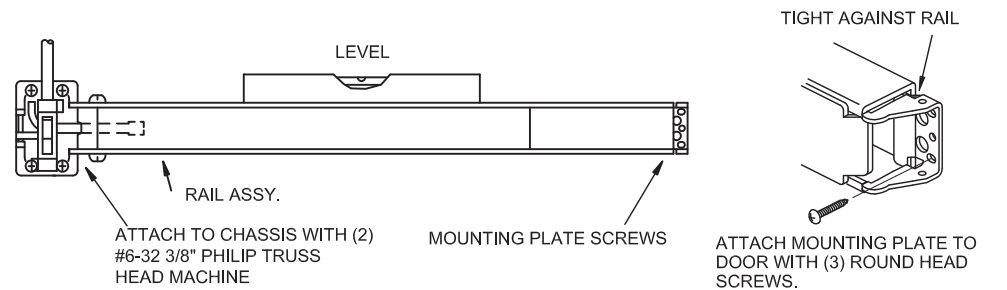
2 1/8"Ø BORE WHEN KNOB AND LEVER TRIM IS USED.

5. APPLY RAIL ASSEMBLY

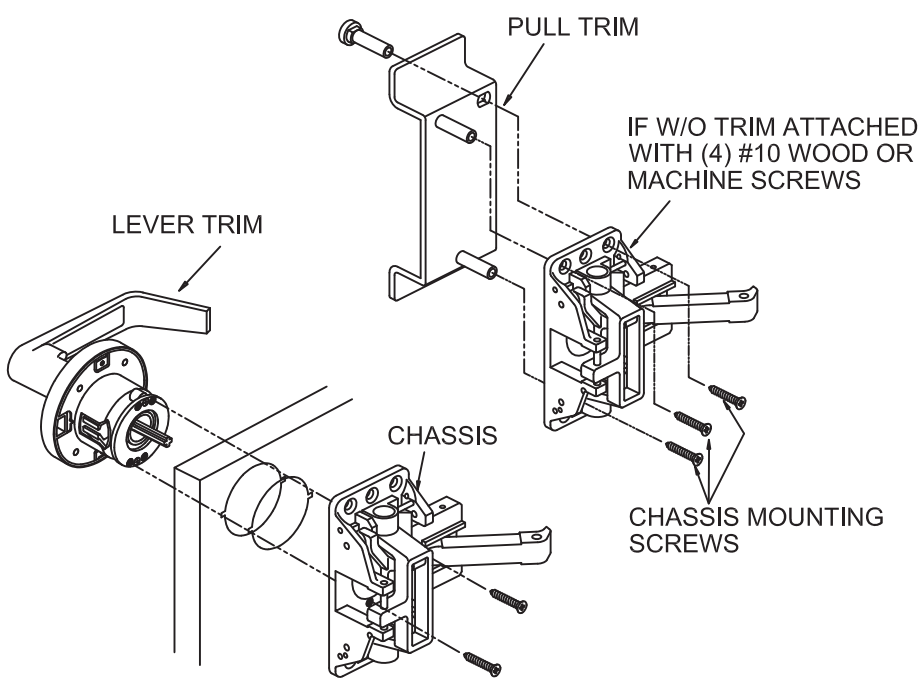
1. CHECK THE SIZE OF DEVICE, IF CUTTING TO LENGTH IS REQUIRED.
2. DETERMINE CUT OFF LENGTH "X" BY SUBTRACTING 1 3/4" FROM "Y". MARK CUT OFF POINT ON MOUNTING RAIL.



3. DREPRESS ARM INTO RAIL OPENING AND SLIDE RAIL ONTO CHASSIS. LEVEL RAIL AND FASTEN CHASSIS AND MOUNTING PLATE.



3. APPLY TRIM + CHASSIS



ENSURE PLUNGER NOT EXTEND PAST CAM SURFACE.

6. APPLY COVER

CHECK FINAL OPERATION OF DEVICE AND ADJUST, THEN FASTEN COVERS.

