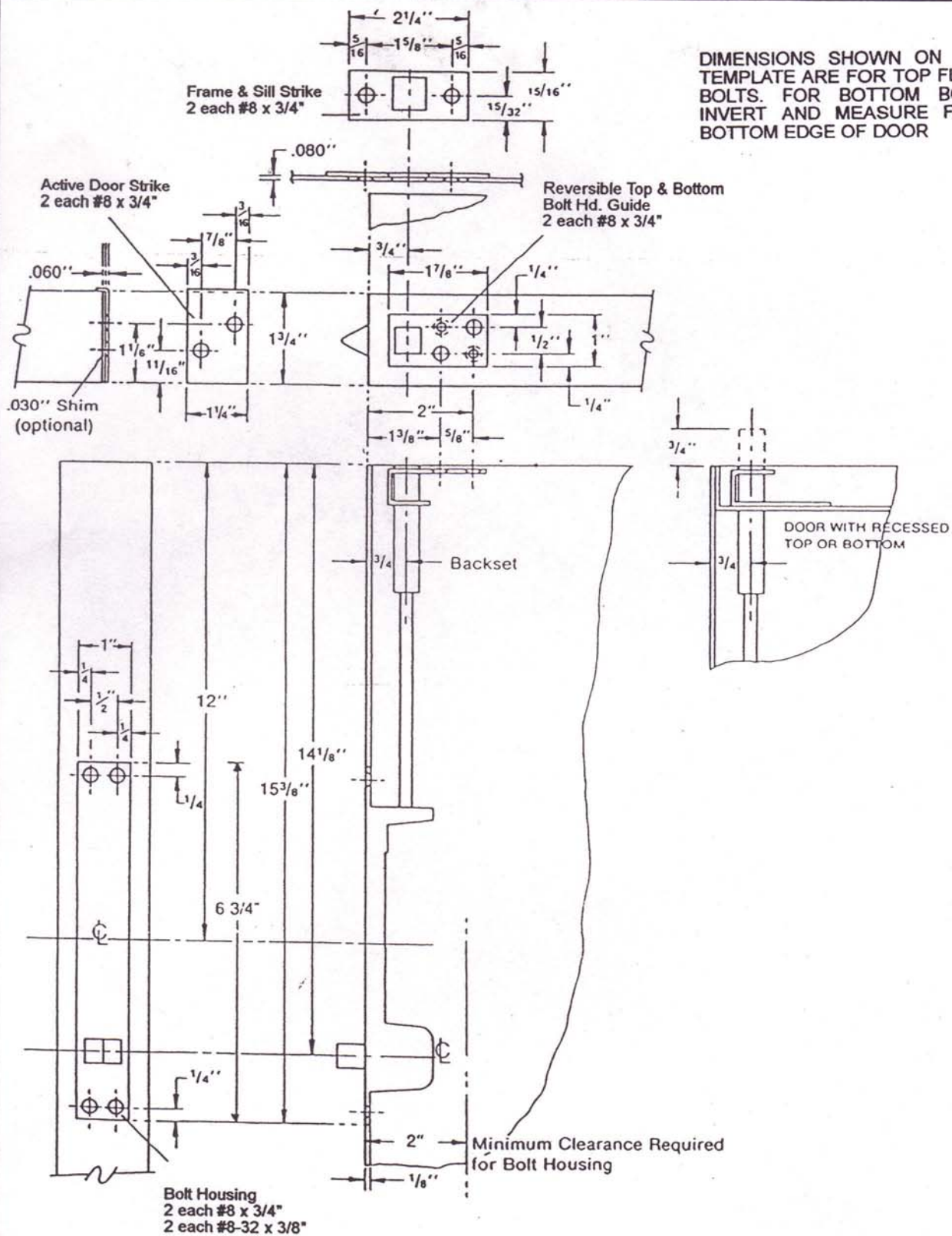


# AUTOMATIC FLUSH BOLTS (FOR METAL DOOR APPLICATION)



## SCREW DETAILS:

Bolt Housing	: 2 - #8 x 3/4" flat head sheet metal/machine screws
	: 2 - #8-32 x 3/8" flat head sheet metal screws
Frame & Sill Strike	: 2 - #8 x 3/4" flat head sheet metal/machine screws
Reversible Bolt Guide	: 2 - #8 x 3/4" flat head sheet metal/machine screws
Active Door Strike	: 2 - #8 x 3/4" flat head sheet metal/machine screws