



2x 

**SCHEMA DI PORTATA CON 2 CERNIERE
2 HINGES LOAD CAPACITY CHART**

Height (mm)	2200	2100	2000	1900	700	800	900	1000	1100	1200	1300
2200	120	120	120	118	100	89	81				
2100	120	120	120	108	94	84	78				
2000	120	120	120	100	88	80	74				
1900	120	120	109	93	83	76	71				

*

3x 

**SCHEMA DI PORTATA CON 3 CERNIERE
3 HINGES LOAD CAPACITY CHART**

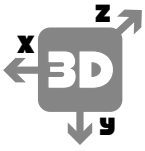
Height (mm)	3000	2900	2800	2700	2600	2500	2400	2300	2200	2100	2000	700	800	900	1000	1100	1200	1300
3000	135	135	135	135	135	135	135	135	135	135	135							
2900	135	135	135	135	135	135	135	135	135	135	135							
2800	135	135	135	135	135	135	135	135	135	135	126							
2700	135	135	135	135	135	135	135	135	135	135	118							
2600	135	135	135	135	135	135	128	110										
2500	135	135	135	135	135	135	119	104										
2400	135	135	135	135	135	130	110	98										
2300	135	135	135	135	135	119	103	93										
2200	135	135	135	132	110	103	97	88										
2100	135	135	135	120	103	92	84											
2000	135	135	135	110	96	87	80											

4 HINGES SUGGESTED

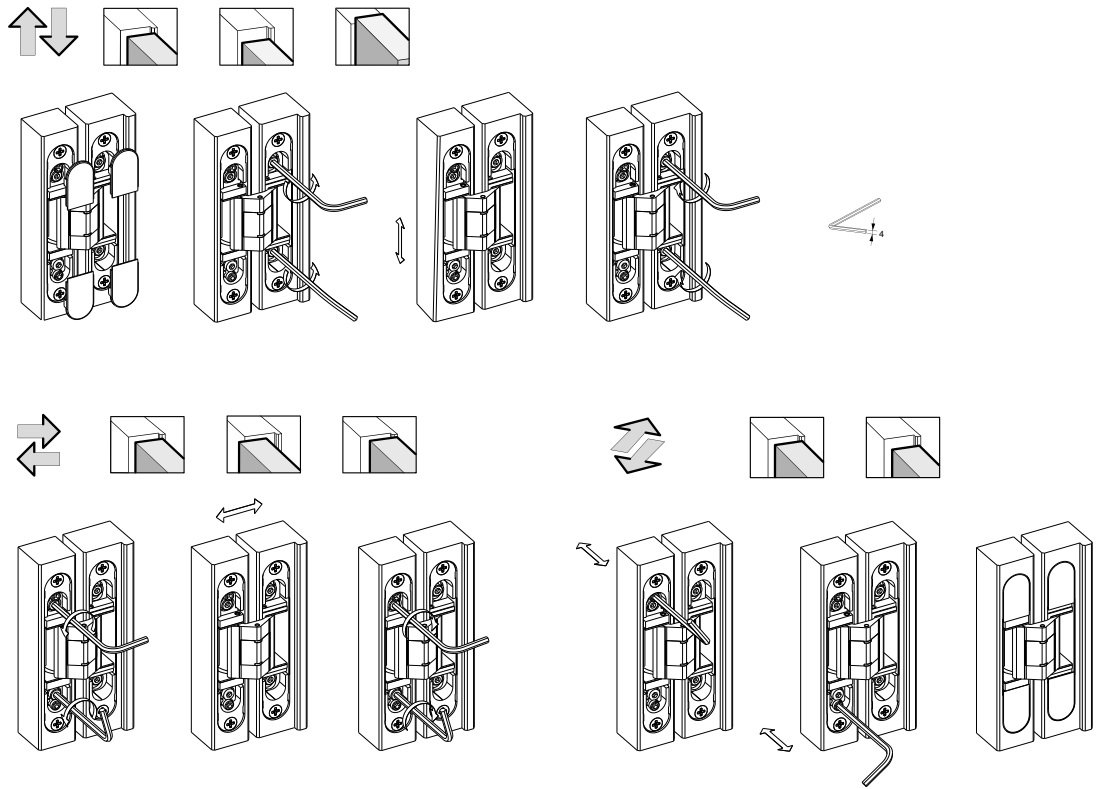
*

For special door sizes and use of door closer devices, please contact our technical office.

* Door Width (mm)



X - 1 mm / + 1 mm
Y - 3 mm / + 3 mm
Z - 1,5 mm / + 2,5 mm



ADDITIONAL RELEVANT TECHNICAL INFORMATION. Our hinges are produced in Italy and tested according to the norm EN1935. In some cases, the use of a fourth hinge may be decisive for the load capacity, especially in case of large widths (>1000 mm) or heights (>2700 mm), on which Cal-Royal suggests to install the fourth hinge in the upper part, 250 mm from the first one.

DOOR CLOSER. Cal-Royal suggests to always install a third or fourth hinge in the upper part of the door in the presence of door closers.

More specifically, as per the European reference standard EN1935, when calculating the load capacity:

- With door closers without brake on opening, consider +20% compared to the real mass of the door.
- With door closers with opening brake (backcheck) consider +75% compared to the real mass of the door.

In case of door height >3000 mm or special uses, please contact our technical office in advance.