

A	B
15,5	2,5
14,5	3
13,5	3,5
12	4
10	4,5
8	5

2x

**SCHEMA DI PORTATA CON 2 CERNIERE  
2 HINGES LOAD CAPACITY CHART**

Height (mm)	700	800	900	1000	1100	1200	1300
2200	55	55	55	54	46	41	37
2100	55	55	55	50	43	39	36
2000	55	55	55	46	41	37	34
1900	55	55	50	43	38	35	33

\* Door Width (mm)

3x

**SCHEMA DI PORTATA CON 3 CERNIERE  
3 HINGES LOAD CAPACITY CHART**

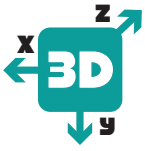
Height (mm)	700	800	900	1000	1100	1200	1300
3000	70	70	70	70	70	70	70
2900	70	70	70	70	70	70	70
2800	70	70	70	70	70	70	65
2700	70	70	70	70	70	70	61
2600	70	70	70	70	70	66	57
2500	70	70	70	70	70	61	54
2400	70	70	70	70	67	57	51
2300	70	70	70	70	62	54	48
2200	70	70	70	68	57	50	46
2100	70	70	70	62	53	47	44
2000	70	70	70	57	50	45	42

\* Door Width (mm)

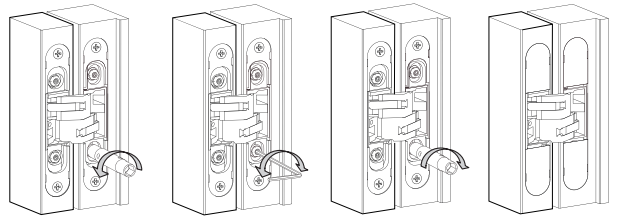
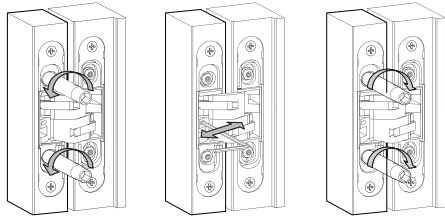
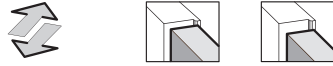
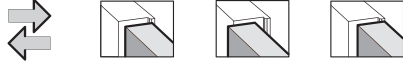
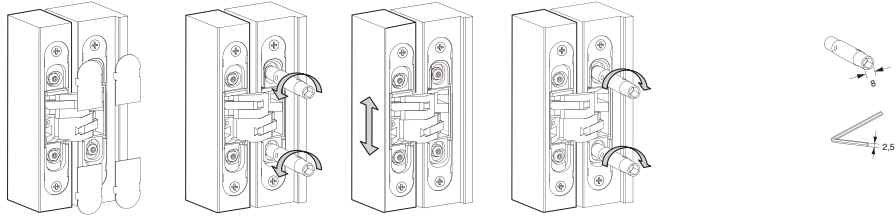
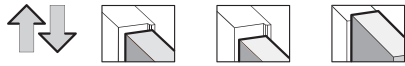
4 HINGES SUGGESTED

For special door sizes and use of door closer devices, please contact our technical office.

\* Door Width (mm)



**X** - 1 mm / + 1 mm  
**Y** - 3 mm / + 3 mm  
**Z** - 1,5 mm / + 3 mm



**ADDITIONAL RELEVANT TECHNICAL INFORMATION.** Our hinges are produced in Italy and tested according to the norm EN1935. In some cases, the use of a fourth hinge may be decisive for the load capacity, especially in case of large widths (>1000 mm) or heights (>2700 mm), on which Cal-Royal suggests to install the fourth hinge in the upper part, 250 mm from the first one.

**DOOR CLOSER.** Cal-Royal suggests to always install a third or fourth hinge in the upper part of the door in the presence of door closers.

More specifically, as per the European reference standard EN1935, when calculating the load capacity:

- With door closers without brake on opening, consider +20% compared to the real mass of the door.
- With door closers with opening brake (backcheck) consider +75% compared to the real mass of the door.

In case of door height >3000 mm or special uses, please contact our technical office in advance.