

2x

Height (mm)	SCHEMA DI PORTATA CON 2 CERNIERE 2 HINGES LOAD CAPACITY CHART						
	700	800	900	1000	1100	1200	1300
2200	80	80	80	78	66	59	54
2100	80	80	80	72	62	56	52
2000	80	80	80	66	58	53	49
1900	80	80	73	62	55	51	47

*

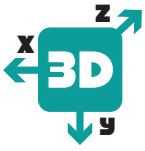
3x

Height (mm)	SCHEMA DI PORTATA CON 3 CERNIERE 3 HINGES LOAD CAPACITY CHART							4 HINGES SUGGESTED
	700	800	900	1000	1100	1200	1300	
3000	120	120	120	120	120	120	120	4 HINGES SUGGESTED
2900	120	120	120	120	120	120	120	
2800	120	120	120	120	120	120	112	
2700	120	120	120	120	120	120	105	
2600	120	120	120	120	120	114	98	
2500	120	120	120	120	120	105	92	
2400	120	120	120	120	115	98	87	
2300	120	120	120	120	106	92	83	
2200	120	120	120	117	98	86	78	
2100	120	120	120	107	91	82	75	
2000	120	120	120	98	85	77	71	

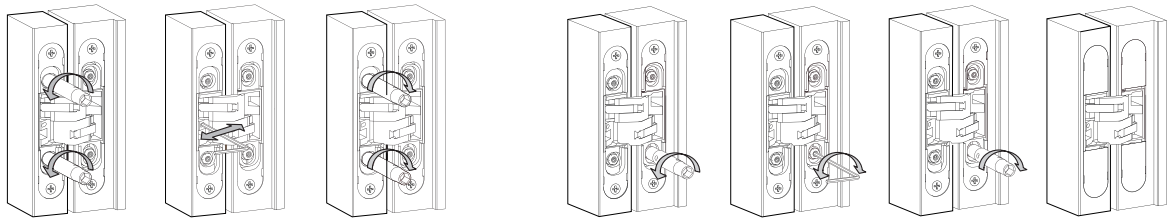
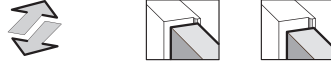
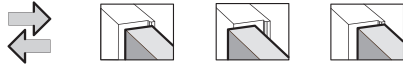
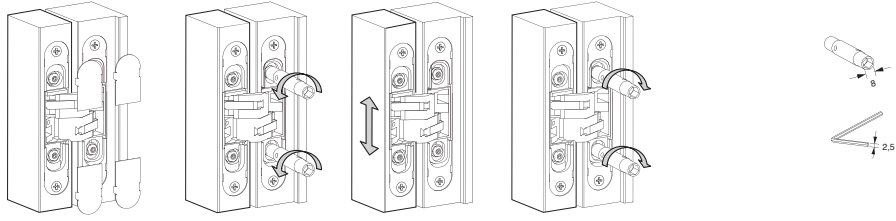
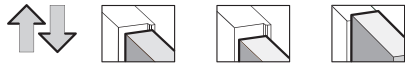
*

For special door sizes and use of door closer devices, please contact our technical office.

* Door Width (mm)



X - 1 mm / + 1 mm
Y - 3 mm / + 3 mm
Z - 1,5 mm / + 2,5 mm



ADDITIONAL RELEVANT TECHNICAL INFORMATION. Our hinges are produced in Italy and tested according to the norm EN1935. In some cases, the use of a fourth hinge may be decisive for the load capacity, especially in case of large widths (>1000 mm) or heights (>2700 mm), on which Cal-Royal suggests to install the fourth hinge in the upper part, 250 mm from the first one.

DOOR CLOSER. Cal-Royal suggests to always install a third or fourth hinge in the upper part of the door in the presence of door closers.

More specifically, as per the European reference standard EN1935, when calculating the load capacity:

- With door closers without brake on opening, consider +20% compared to the real mass of the door.
- With door closers with opening brake (backcheck) consider +75% compared to the real mass of the door.

In case of door height >3000 mm or special uses, please contact our technical office in advance.