

2x

H.

SCHEMA DI PORTATA CON 2 CERNIERE 2 HINGES LOAD CAPACITY CHART							
2200	60	60	60	59	51	46	42
2100	60	60	60	55	48	44	40
2000	60	60	60	51	46	42	39
1900	60	60	55	48	43	40	38
	700	800	900	1000	1100	1200	1300

*

3x

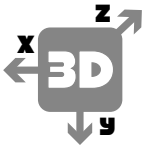
H.

SCHEMA DI PORTATA CON 3 CERNIERE 3 HINGES LOAD CAPACITY CHART							
3000	80	80	80	80	80	80	80
2900	80	80	80	80	80	80	80
2800	80	80	80	80	80	80	75
2700	80	80	80	80	80	80	71
2600	80	80	80	80	80	76	67
2500	80	80	80	80	80	71	64
2400	80	80	80	80	77	67	61
2300	80	80	80	80	72	64	58
2200	80	80	80	78	67	60	56
2100	80	80	80	72	63	57	54
2000	80	80	80	67	60	55	52
	700	800	900	1000	1100	1200	1300

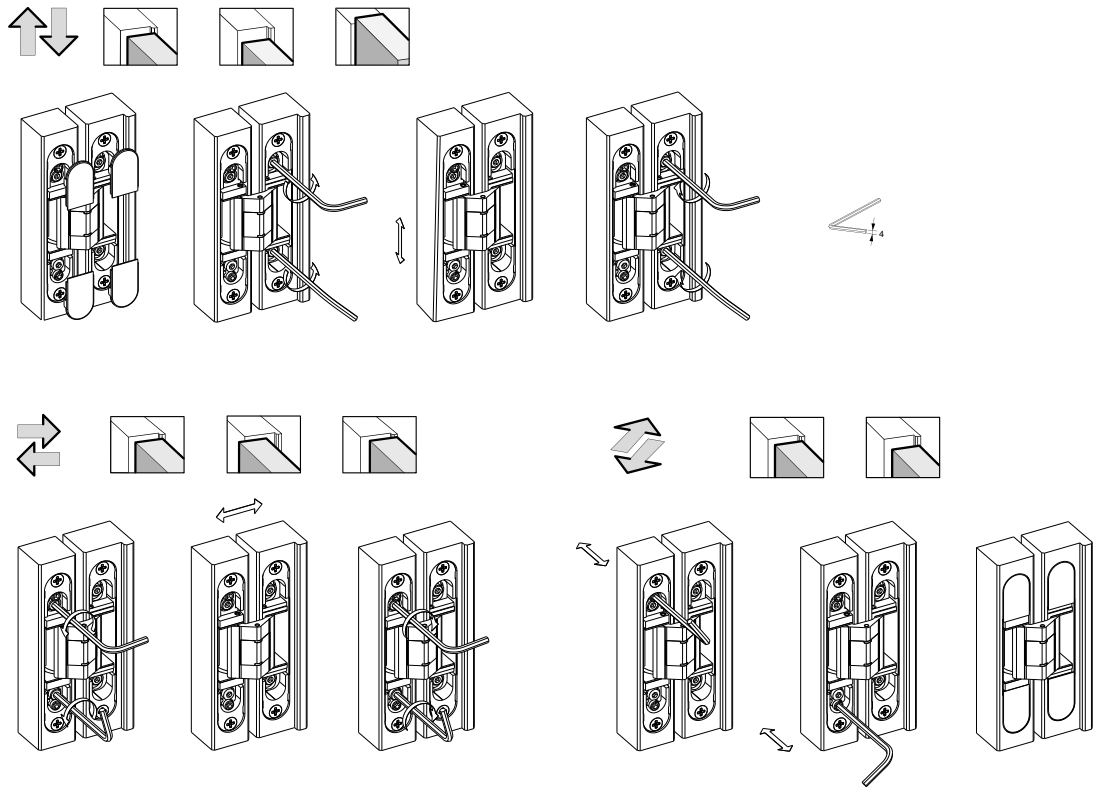
* 4 HINGES SUGGESTED

For special door sizes and use of door closer devices, please contact our technical office.

* Door Width (mm)



X - 1 mm / + 1 mm
Y - 3 mm / + 3 mm
Z - 1,5 mm / + 2,5 mm



ADDITIONAL RELEVANT TECHNICAL INFORMATION. Our hinges are produced in Italy and tested according to the norm EN1935. In some cases, the use of a fourth hinge may be decisive for the load capacity, especially in case of large widths (>1000 mm) or heights (>2700 mm), on which Cal-Royal suggests to install the fourth hinge in the upper part, 250 mm from the first one.

DOOR CLOSER. Cal-Royal suggests to always install a third or fourth hinge in the upper part of the door in the presence of door closers.

More specifically, as per the European reference standard EN1935, when calculating the load capacity:

- With door closers without brake on opening, consider +20% compared to the real mass of the door.
- With door closers with opening brake (backcheck) consider +75% compared to the real mass of the door.

In case of door height >3000 mm or special uses, please contact our technical office in advance.