



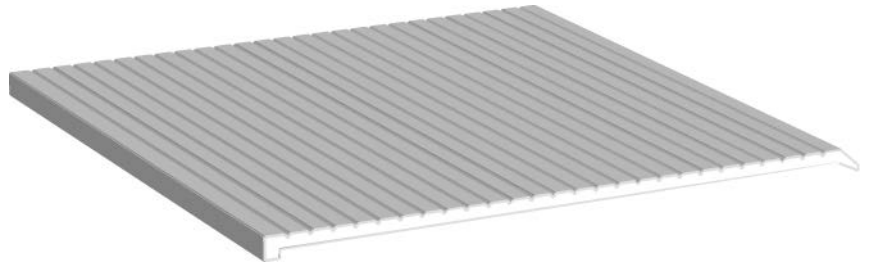
ITEM # CR4243

FINISH: MILL FINISH ALUMINUM AND DURO

3-1/2" (88.9mm) SILL NOSING



**3-1/2" W
88.9 mm**



INSTALLATION INSTRUCTIONS

1. Measure width and cut the nosing to exact full width of the opening.
2. If necessary, trim and notch the nosing ends to accommodate the side jamb stops.
3. Secure using construction grade adhesive to bond nosing to concrete sill to be covered.
(Note: Adhesive not included)
4. Seal both ends of the nosing and along the sides. If used with pre-installed threshold, unscrew threshold and slip top leg of nosing under outside leg of threshold.
5. If installed in the door, operate the door multiple times to ensure proper adjustment to prevent the door from self-closing and latching.



Meets UL10B, UL10C and
UBC 7-2 (1997) Category J



**3 HR POSITIVE
PRESSURE**

MATERIAL FOR USE IN LISTED STEEL FRAMES AND CLASSIFIED HOLLOW METAL STEEL COMPOSITE TYPE FIRE DOORS ARE RATED UP TO AND INCLUDING 3 HOURS, WOOD COMPOSITE TYPE FIRE DOORS ARE RATED UP TO AND INCLUDING 1-1/2 HOURS, AND WOOD CORE FIRE DOORS ARE RATED 20 MINUTES WITHOUT HOSE STREAM.