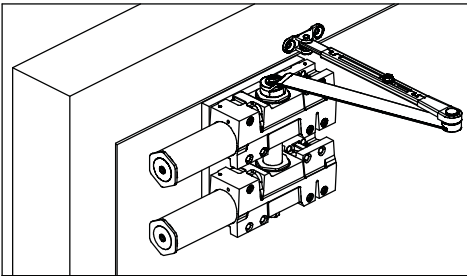


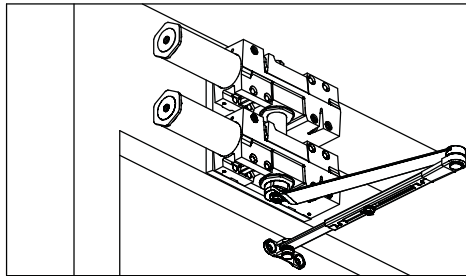


# INSTALLATION INSTRUCTIONS FOR DOUBLE CR441 USING CONCR441 CONNECTOR PLATE

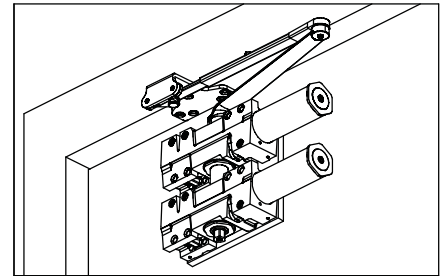
Regular Arm  
(Pull Side) Mounting



Top Jamb  
(Push Side) Mounting



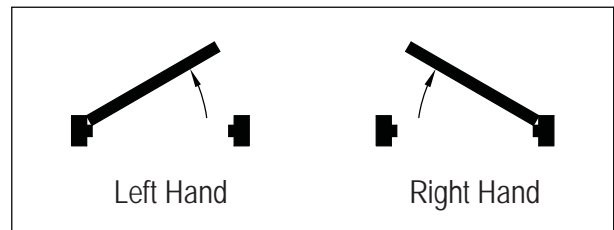
Parallel Arm  
(Push Side) Mounting



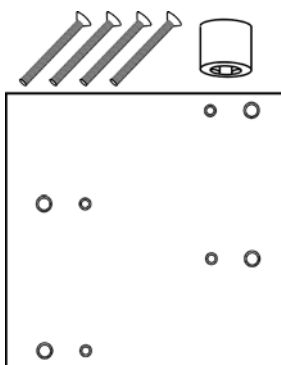
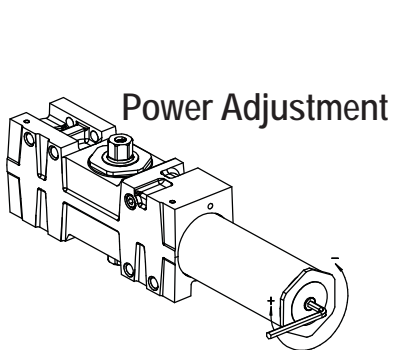
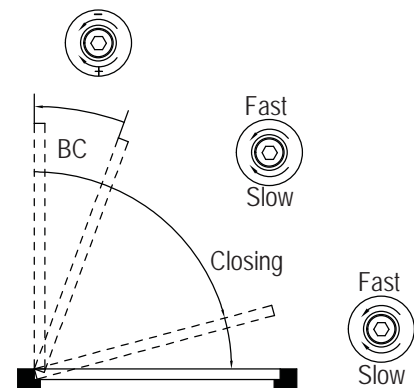
Power Adjustment and Door Width

Door Max Width		Adjusting Nut and Turns
Exterior	Interior	
-----	5 lb-f	-5 (counter-clockwise)
8.5 lb-f	34" (864)	-2 (counter-clockwise)
30" (762)	38" (962)	0
36" (914)	48" (1219)	+5 (clockwise)
42" (1067)	54" (1372)	+10 (clockwise)
48" (1219)	60" (1524)	+15 (clockwise)

Left Hand Door and Right Hand Door



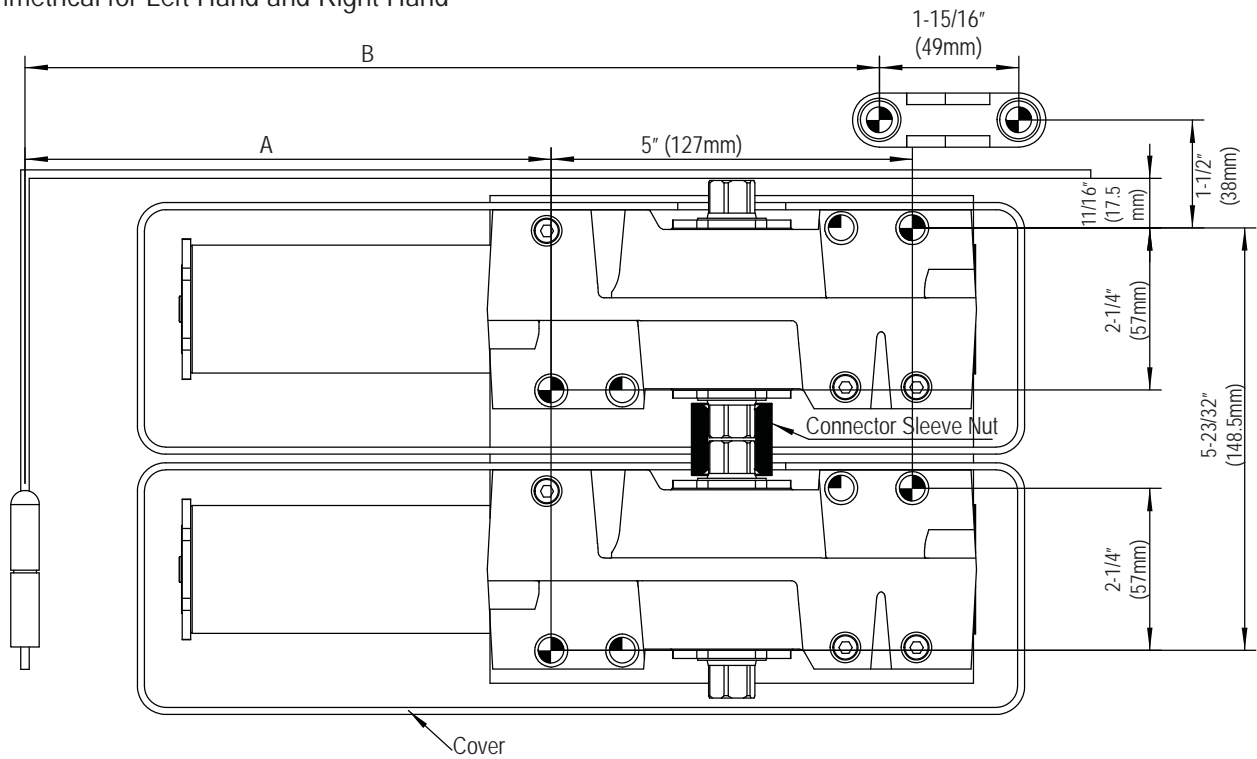
Running and BC adjustment



CONCR441 Connector  
Plate

# REGULAR ARM (PULL SIDE) MOUNTING

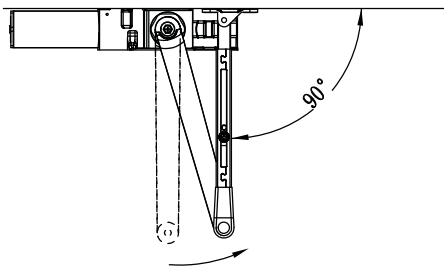
Symmetrical for Left Hand and Right Hand



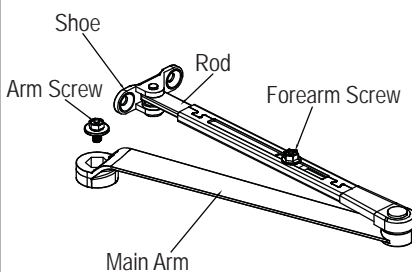
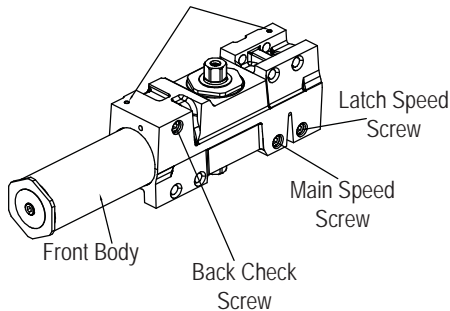
### DIM

Opening	A	B
100°	185	300
130°	159	275

Holes	03.2	05.2
Screw		



Cover Screw



### Installation Instructions:

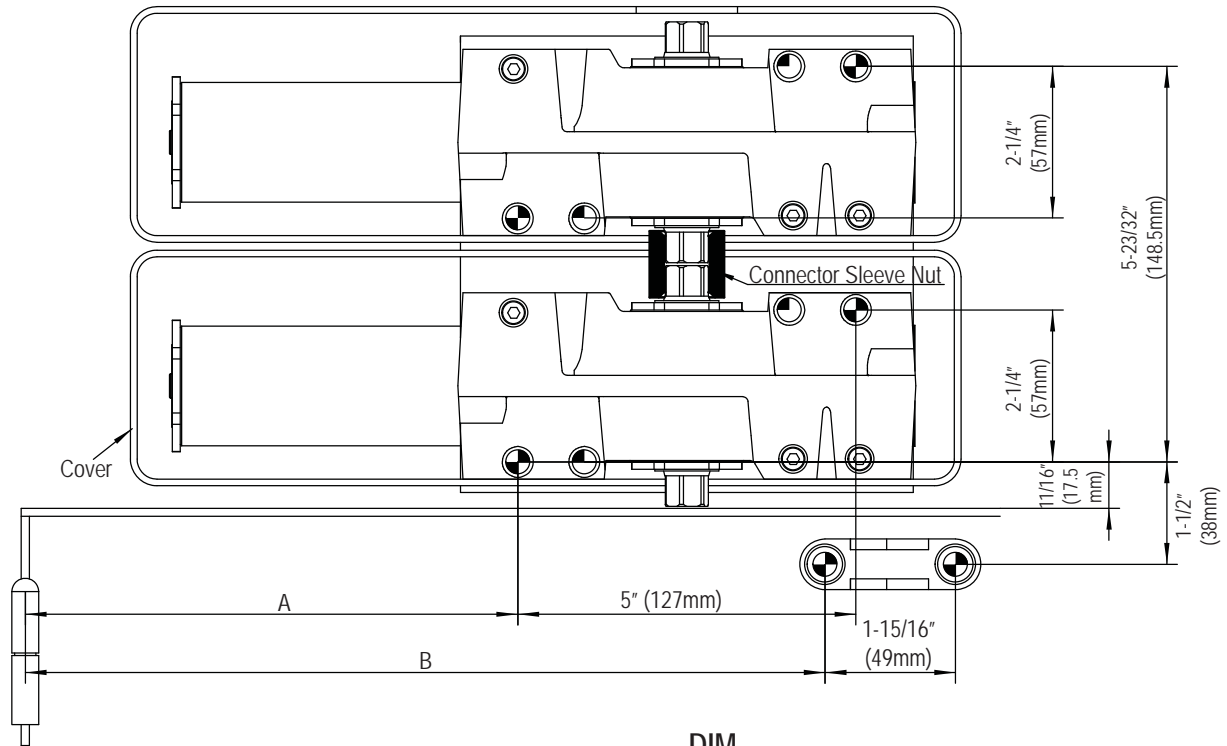
1. Drill 6 holes according to the drawing.
2. Connect the two door closers using the Connector Sleeve Nut. Use 4 screws to fix them to the mounting plate. Place the Front Body facing the Door Hinge and use the screws to fix the mounting plate to the door.
3. Fix the Shoe to the frame using the screws provided. (If more power is needed to close the door, turn the Shoe 180°)
4. Install main arm to the top pinion shaft according to the drawing. Use the screws provided.
5. Open the door, connect the rod and Forearm tube. Close the door and adjust the length of the forearm. Place the Forearm perpendicular to the frame. Fix the forearm with screws.
6. Install the cover and fix with screws provided.

### Function:

1. Before adjusting the door closers, turn all the valves to maximum speed.
2. Normal closing time is 4-6 seconds from the 90° to the 0°. To decrease the main speed of door, turn the regulating valve near the shaft, clockwise. To decrease latch speed, turn regulating valve near the hinge, clockwise.
3. Turn the Back Check Valve clockwise. Back Check function is available at 70° - 110°.
4. Increase or decrease the closing force by adjusting the power valve. See page 1 (Power adjustment and door width) for reference.

# TOP JAMB (PUSH SIDE) MOUNTING

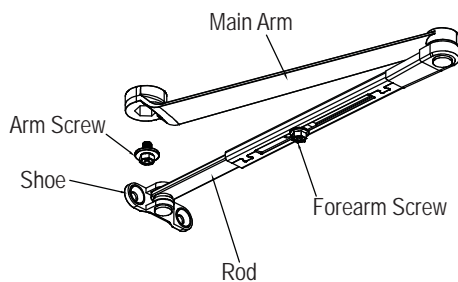
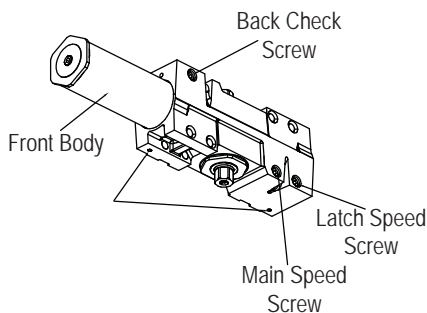
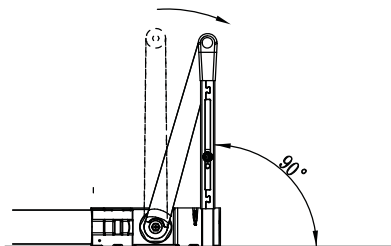
Symmetrical for Left Hand and Right Hand



### DIM

Opening	A	B
100°	185	300
130°	159	275

Holes	03.2	05.2
Screw		



### Installation Instructions:

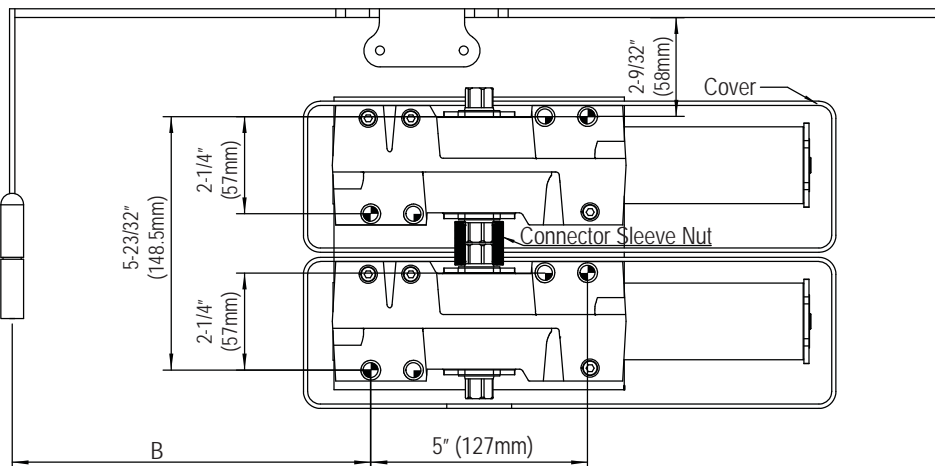
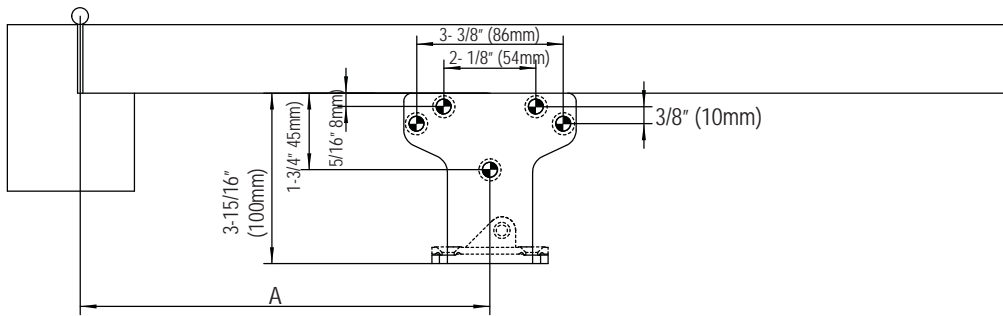
1. Drill 6 holes according to the drawing.
2. Connect the two door closers using the Connector Sleeve Nut. Use 4 screws to fix them to the mounting plate. Place the Front Body facing the Door Hinge and use the screws to fix the mounting plate to the door.
3. Fix the Shoe to the frame using the screws provided. (If more power is needed to close the door, turn the Shoe 180°)
4. Install main arm to the top pinion shaft according to the drawing. Use the screws provided.
5. Open the door, connect the rod and Forearm tube. Close the door and adjust the length of the forearm. Place the Forearm perpendicular to the frame. Fix the forearm with screws.
6. Install the cover and fix with screws provided.

### Function:

1. Before adjusting the door closers, turn all the valves to maximum speed.
2. Normal closing time is 4-6 seconds from the 90° to the 0°. To decrease the main speed of door, turn the regulating valve near the shaft, clockwise. To decrease latch speed, turn regulating valve near the hinge, clockwise.
3. Turn the Back Check Valve clockwise. Back Check function is available at 70° - 110°.
4. Increase or decrease the closing force by adjusting the power valve. See page 1 (Power adjustment and door width) for reference.

# PARALLEL ARM (PUSH SIDE) MOUNTING

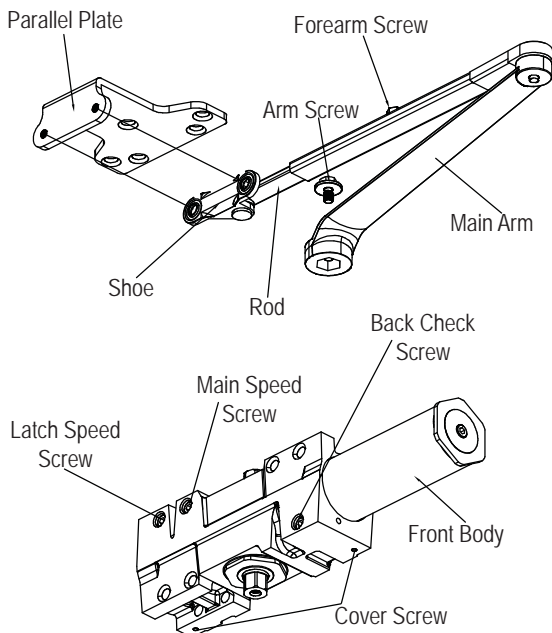
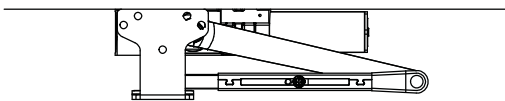
Symmetrical for Left Hand and Right Hand



DIM

Opening	A	B
100°	240	210
130°	220	185
140°	200	165

Holes	03.2	05.2
Screw		



### Installation Instructions:

1. Drill 9 holes according to the drawing.
2. Connect the two door closers using the Connector Sleeve Nut. Use 4 screws to fix them to the mounting plate. Place the Front Body facing the Door Hinge and use the screws to fix the mounting plate to the door.
3. Fix the Shoe to the frame using the screws provided. (If more power is needed to close the door, turn the Shoe 180°)
4. Install main arm to the top pinion shaft according to the drawing. Use the screws provided.
5. Open the door, connect the rod and Forearm tube. Close the door and adjust the length of the forearm. Place the Forearm perpendicular to the frame. Fix the forearm with screws.
6. Install the cover and fix with screws provided.

### Function:

1. Before adjusting the door closers, turn all the valves to maximum speed.
2. Normal closing time is 4-6 seconds from the 90° to the 0°. To decrease the main speed of door, turn the regulating valve near the shaft, clockwise. To decrease latch speed, turn regulating valve near the hinge, clockwise.
3. Turn the Back Check Valve clockwise. Back Check function is available at 70° - 110°.
4. Increase or decrease the closing force by adjusting the power valve. See page 1 (Power adjustment and door width) for reference.