

CR441 SERIES

ANSI A156.4 Grade 1, Full Cover Multi-Size, Full Feature Closer
UL Listed, Conforms to Standards UL10C and UBC7-2-1997
BHMA Certified Lifetime Warranty



MEETS
The Buy American Act
(SPECIFY **MADE IN KOREA** WHEN ORDERING)

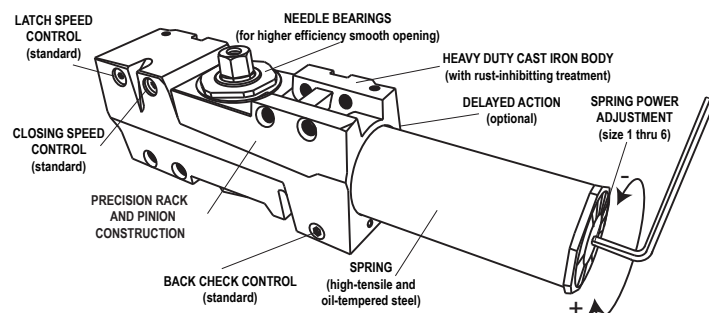
LIFETIME WARRANTY

BHMA
CERTIFIED
Be Safe. Be Secure. Look for the Mark.

- Cal-Royal's Finest Hydraulic Door Closer Series Meeting the Highest Industry Standards, Grade 1
- Heavy-Duty Double Lever Arm with Extra Smooth Action Full Feature Multi-Size Commercial Door Closer for Use In Office Buildings, Shopping Centers and other Commercial Buildings
- Standard Back-Check Function
- Standard Packaging includes Full Plastic Cover with Sex Bolts and Screws. (Metal Optional)
- Optional Plated Metal Decorative Covers Including 32D
- Optional Adjustable Delayed Action / Barrier Free for Handicapped Or Elderly

FEATURES

- Universal Application. Non-Handed for Standard, Top Jamb or Parallel Arm Installation
- Non-Sized, 1 thru 6 FACTORY PRESET SIZE 3 Meets ADA
- Door Weights: 30-260 lbs
- Hydraulic Door Closer with Standard Adjustable Back-Check Function
- Adjustable Closing and Latching Speed by Two Separate Regulating Valves
- Optional Adjustable Delayed Action (DA) Preset at the Factory for Approximately 20 Seconds, Between 70° and 0° Delay Time Easily Adjusted up to 1 Minute. **CR441 DA**
- Standard Full Plastic Cover (**CR441COV**)
- Self-Tapping Screws and Closer Gauge for Easy Adjustment is Standard Feature
- Available in Alum, Duro, Gold, US3, 26, 26D, 10B and 32D



REDUCED OPENING FORCE CR441 DOOR CLOSERS

IMPORTANT Any door closer, including those certified by BHMA to conform to ANSI Standard A156.4, that is chosen, installed and adjusted based on ADA or other reduced opening force requirement may not provide sufficient power to close and latch a door. Location of door could also affect action and efficiency of door closer.

DOOR WIDTH	36"	42"	48"
**8.5 lbs.	CR441	CR441	CR441
**5.0 lbs.	CR441	CR441	CR441

** Maximum Opening Force

TABLE OF SIZES

Closing power of CR441 closers may be adjusted 50%

→ Shows recommended range of door width for closer size.

EXTERIOR (and VESTIBULE) DOOR WIDTH

	24"	30"	36"	42"	48"
CR441 Series	size 3	size 4	size 5	size 6	

Minimum Door Width

INTERIOR DOOR WIDTH

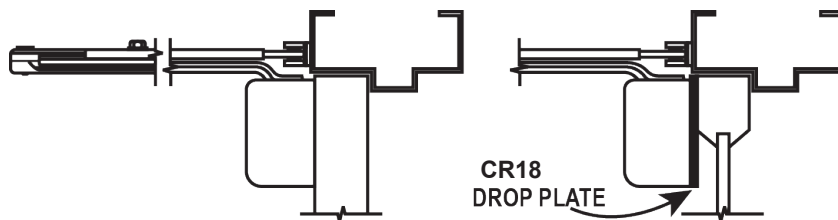
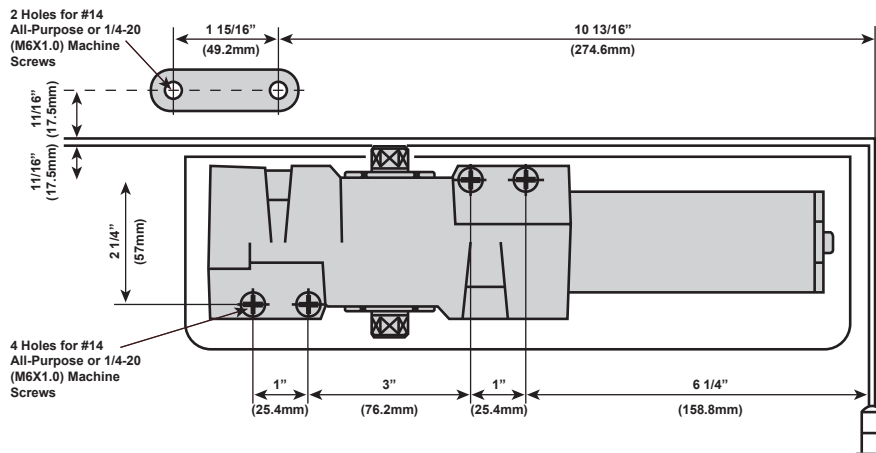
	24"	34"	38"	48"	54"	60"
CR441 Series	size 2	size 3	size 4	size 5	size 6	

Minimum Door Width

Adjustable Size 1 thru 6

DESCRIPTION	SIZE	
A. Length of Closer Body	11"	<p>Front View</p> <p>End View</p>
B. Horizontal Mounting Holes	5"	
C. Vertical Mounting Holes	1"	
D. Width of Closer Body	2 3/4"	
E. Projection from Door	2"	

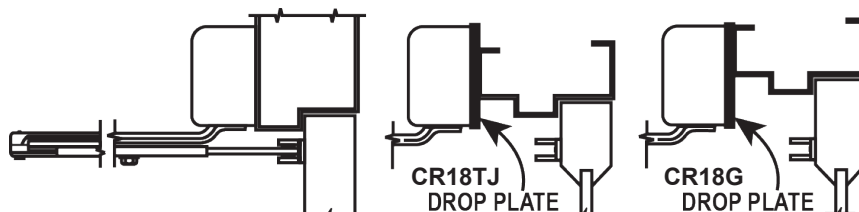
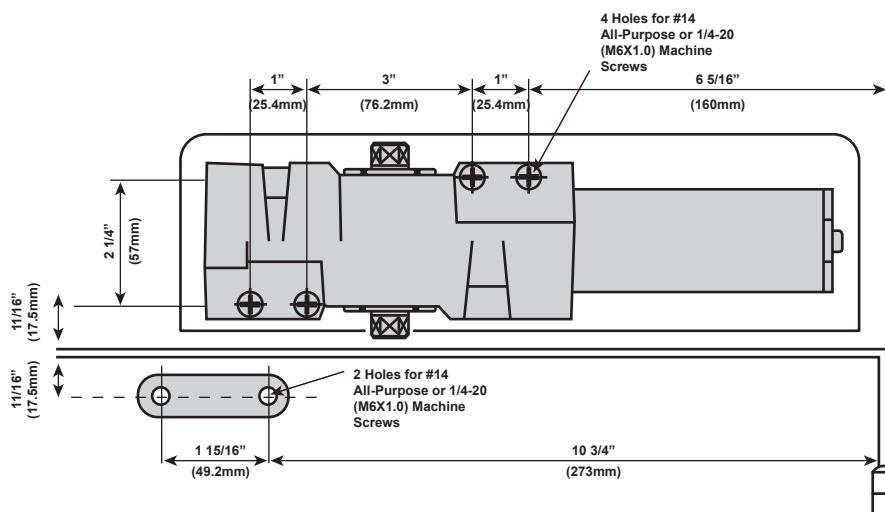
CR441 SERIES : REGULAR ARM INSTALLATION (PULL SIDE)



- **Butt Hinges** should not exceed 5" (127mm) in width.
- **Auxiliary Stop** is recommended at hold-open point or where a door cannot swing beyond 120°
- **Reveal** should not exceed 3/4" (19mm) for regular arm or hold-open arm.
- **Top Rail** less than 3 3/4" (19mm) requires PLATE, CR18. Plate requires 2" (51mm) minimum.
- **Clearance** of 2 3/8" (60mm) behind door required for 90° installation.
- **Delayed Action** - Delays closing from 120° to 70°. Delay time adjustable up to approximately 1 minute.
- See **Optional Installation** for ARMS and BRACKETS available on the next page.

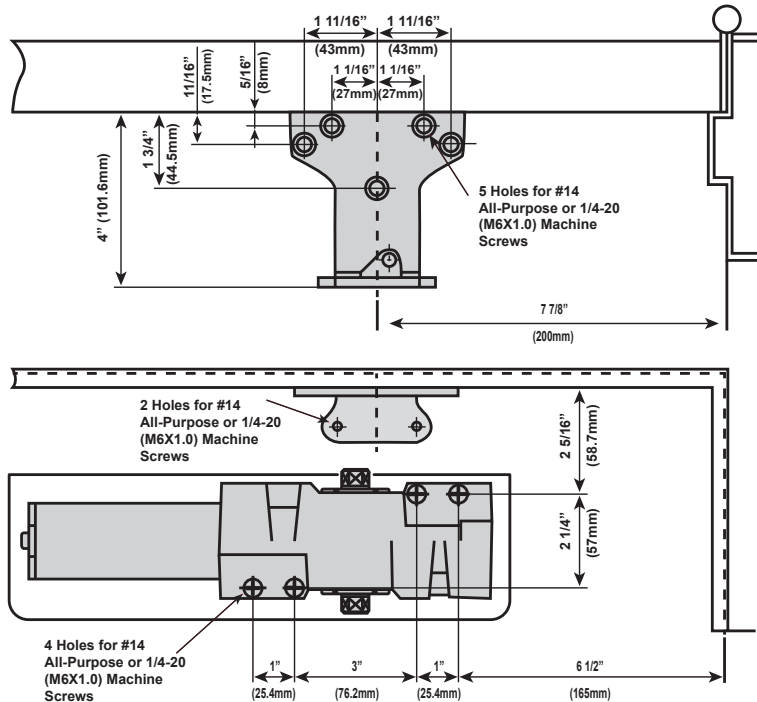
- RIGHT HAND DOOR SHOWN
- SURFACE MOUNTED
- ADJUSTABLE AND PRE-SET BACKSET
- NON-HOLD OPEN / HOLD OPEN

CR441 SERIES : TOP JAMB INSTALLATION (PUSH SIDE)



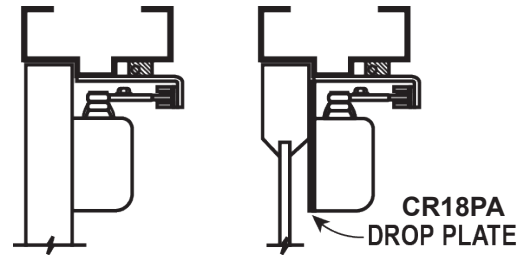
- **Butt Hinges** should not exceed 5" (127mm) in width.
- **Auxiliary Stop** is recommended at hold-open point or where a door cannot swing beyond 120°
- **Reveal** of 2 9/16" (65mm) allows 120° opening for regular or standard hold-open arm. 8" (203mm) allows up to 120° opening with CR441EXT.
- **Top Rail** requires 1 1/4" (32mm) minimum. 2 1/2" (57mm) minimum with closer on PLATE, CR18TJ. 3" (76mm) minimum with closer on PLATE, CR18G.
- **Head Frame** less than 3 1/2" (89mm) requires PLATE, CR18TJ. With flush ceiling, use PLATE, CR18G. Either plate requires 1 3/4" (44mm) minimum.
- **Delayed Action** - Delays closing from 120° to 70°. Delay time adjustable up to approximately 1 minute.
- See **Optional Installation** for ARMS and BRACKETS available on the next page.
- LEFT HAND DOOR SHOWN
- SURFACE MOUNTED
- ADJUSTABLE AND PRE-SET BACKSET
- NON-HOLD OPEN / HOLD OPEN

CR441 SERIES : PARALLEL ARM INSTALLATION (PUSH SIDE)



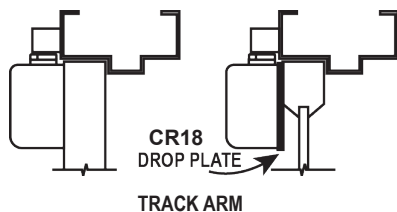
- RIGHT HAND DOOR SHOWN
- SURFACE MOUNTED
- ADJUSTABLE AND PRE-SET BACKSET
- NON-HOLD OPEN / HOLD OPEN

- **Butt Hinges** should not exceed 5" (127mm) in width.
- **Auxiliary Stop** is recommended at hold-open point or where a door cannot swing beyond 180°, or where **CR3077SPAS** arm is not used.
- **Top Rail** less than 5 3/8" (137mm) measured from the stop requires **PLATE, CR18PA**. Plate requires 2" (51mm) minimum from the stop.
- **Stop Width** minimum 1" (25mm). **CUSH** arm requires minimum 1 1/2" (38mm).
- **Delayed Action** - Delays closing from 120° to 70°. Delay time adjustable up to approximately 1 minute.
- See **Optional Installation** for ARMS and BRACKETS available on the next page.

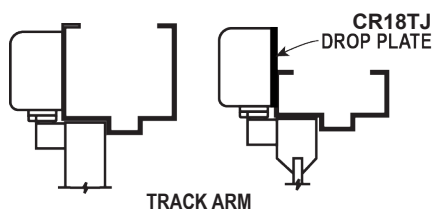


CR441 SERIES : OPTIONAL INSTALLATION

REGULAR ARM (PULL SIDE)



TOP JAMB (PUSH SIDE)



MAXIMUM OPENING: 180° (Standard), 120° (Hold Open)

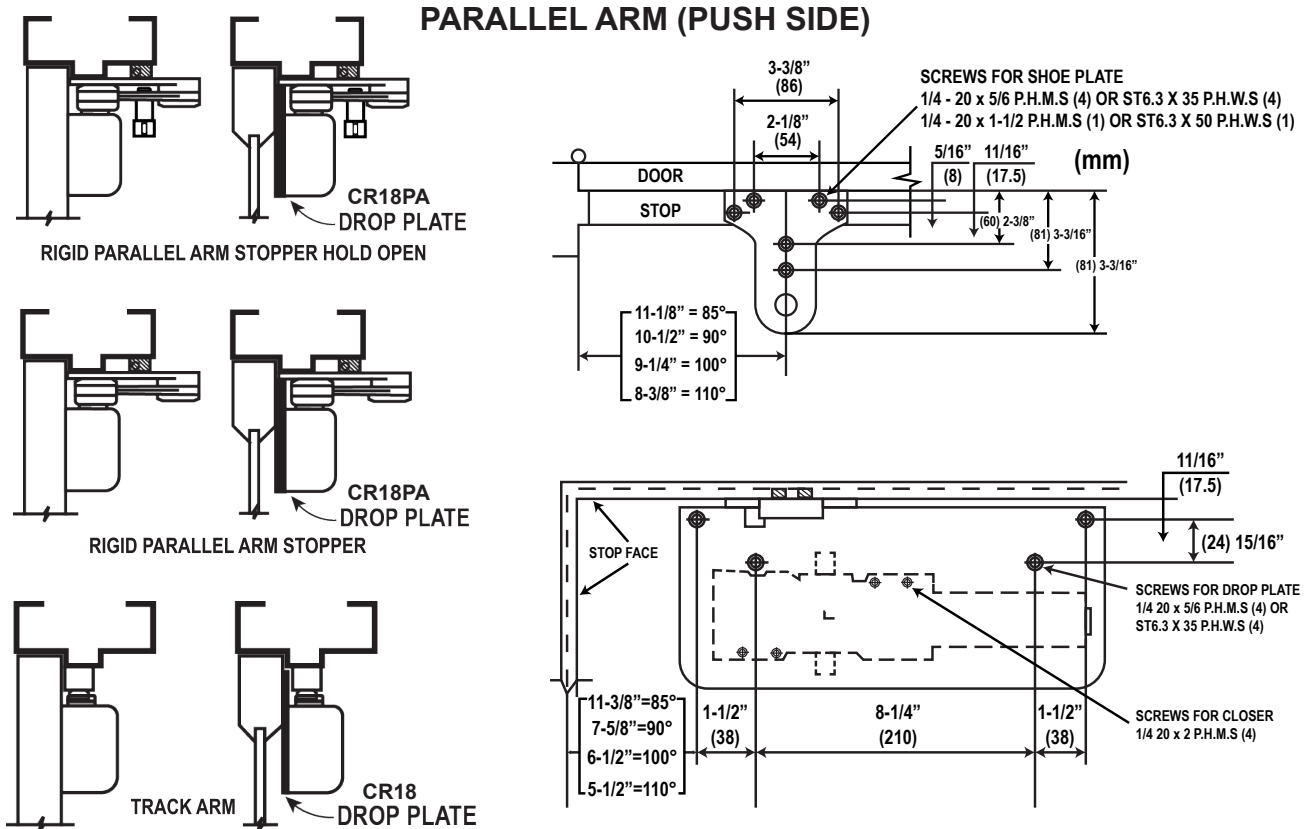
OPTIONAL INSTALLATION

ARMS

- **CR3049HO** - Non-Handed Hold Open Arm with Parallel Bracket
- **CR441ARM** - Door Closer Arm (Main and Regular Forearm)
- **CR441EXT** - Extended Long Arm (3" extension) for Top Jamb with reveals
- **TRACK441** - Slide Track Arm with Hold-Open

- **CR18PA** - Drop Plate for Parallel Arm Mounting Top Rail is less than 5 1/2" Measured from Stop. Plate Requires 2" Minimum Top Rail
- **CR18** - Drop Plate used where Top Rail is less than 3 3/4"
- **CR18TJ** - Drop Plate for Top Jamb where Face is less than 3 1/2"
- **CR18G** - Drop Plate for Top Jamb Mounted Closer Flush with Top of Head Frame Face in Flush Ceiling Condition. Plate Requires 1 3/4" Minimum Head Frame

CR441 SERIES : OPTIONAL INSTALLATION



MAXIMUM OPENING: 180° (Standard), 120° (Hold Open)

OPTIONAL INSTALLATION ARMS

- **CR3049HO** - Non-Handed Hold Open Arm with Parallel Bracket
- **CR441ARM** - Door Closer Arm (Main and Regular Forearm)
- **CR441EXT** - Extended Long Arm (3" Extension) for Top Jamb with Reveals
- **TRACK441** - Slide Track Arm with Hold-Open
- **CR3049HOSPRING** - Super Rigid Parallel Arm Stopper Hold-Open, Non-Handed with Spring Loaded Stop in Soffit Shoe
- **CR3077SPRING** - Super Rigid Non-Handed Parallel Arm with Spring Loaded Stop in the Soffit Shoe
- **CR3049HOSRPS** - Super Rigid Parallel Arm Stopper Hold-Open, Non-Handed with Stop in Soffit Shoe
- **CR3049SPAS** - Super Rigid Parallel Arm Stopper, Non-Handed with Stop in Soffit Shoe
- **CR3077HDAR** - Non-Handed Parallel Arm Features Forged, Solid Steel Main and Forearm for Potentially Abusive Installations

BRACKETS

- **CR18PA** - Drop Plate for Parallel Arm Mounting Top Rail is less than 5 1/2" Measured from Stop. Plate Requires 2" Minimum Top Rail
- **CR18** - Drop Plate Used Where Top Rail is less than 3 3/4"
- **CR18TJ** - Drop Plate for Top Jamb where Face is less than 3 1/2"
- **CR18G** - Drop Plate for Top Jamb Mounted Closer Flush with Top of Head Frame Face in Flush Ceiling Condition. Plate Requires 1 3/4" Minimum Head Frame
- **CR441PA** - Parallel Arm Bracket