

# SUMMIT SERIES LEVERSETS

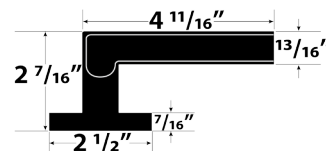
WITH PUSH BUTTON LOCKING MECHANISM & AUTO RELEASE FEATURE



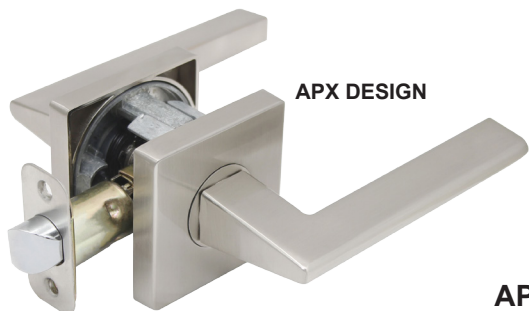
AMB DESIGN



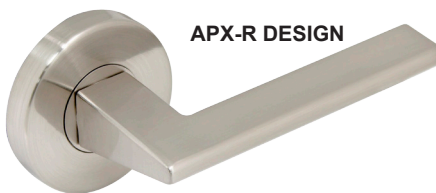
AMB-R DESIGN



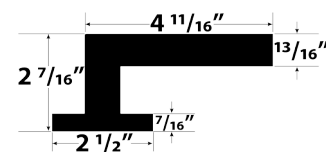
AMBER "AMB" SERIES (NON-HANDED)  
CONCEALED SCREW



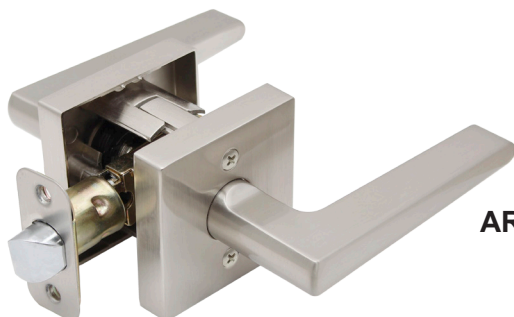
APX DESIGN



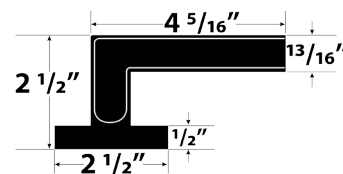
APX-R DESIGN



APEX "APX" SERIES (NON-HANDED)  
CONCEALED SCREW



ARGO "ARG" SERIES (NON-HANDED)  
EXPOSED SCREW



## FEATURES & SPECIFICATIONS

- ◆ Grade 3, ANSI Standard A156.2
- ◆ Keyed Entry on Amber Design Only, Re-keyable Kwikset 5-Pin
- ◆ Trim and Levers are Zinc Plated, Square Rose is Standard
- ◆ Round Rose Option for Amber and Apex Designs only
- ◆ Tubular Body, Concealed Screws for Amber and Apex Series, and Exposed Screws for Argo Series
- ◆ Fits 1 3/8" to 1 3/4" Wood or Metal Doors
- ◆ 2 3/8" or 2 3/4" Adjustable Backset, Size 1" x 2 1/4" Round Corner Standard
- ◆ Square Corner Option and Drive-in Latch bolt also Available (4DRIVP2-2) on Special Factory Order
- ◆ Round Corner Full Lip Strike: 1 3/4" x 2 1/4", Optional T-Strike
- ◆ **Push Button Release on Privacy from Inside by Turning Lever**
- ◆ **All Designs have Auto Release for Immediate Egress, Panic Exit Structure on Privacy Functions**
- ◆ 1" Bore Diameter for Latch, 2 1/8" Diameter for Lock Housing

## FINISHES

- ◆ US3 - Bright Brass
- ◆ US5 - Antique Brass
- ◆ US15 - Satin Nickel
- ◆ US15A - Antique Nickel
- ◆ US10B - Oil Rubbed Bronze
- ◆ US26D - Satin Chrome
- ◆ US26 - Polished Chrome
- ◆ **Refer to price list for stock finishes**

## FUNCTIONS

- 20 - Privacy (Bed & Bath)
- 30 - Passage (Hall & Closet)
- 40 - Dummy

**5 Year Finish Warranty**  
**25 Year Mechanical Warranty**