

# GENESYS

**CLUTCH MECHANISM**  
**FIXED THRU BOLT INSTALLATION**

**Interchangeable Core for**  
**BEST, FALCON & ARROW**



**MEETS**  
*The Buy American Act*



**LIFETIME**  
**WARRANTY**

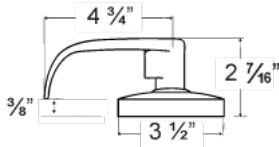
**BHMA**<sup>TM</sup>  
**CERTIFIED**  
Be Safe. Be Secure. Look for the Mark.



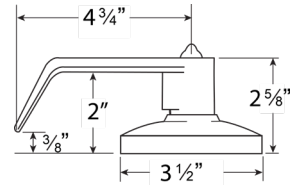
Meets ADA requirements  
Specially designed for  
Barrier Free Application  
Conforms with ANSI / BHMA A156.2,  
Series 4000, Grade 1 Requirements  
Exceeds 1,000,000 Cycles



**SPA DESIGN**



**GN DESIGN**

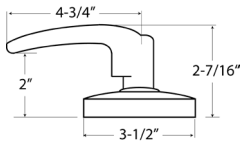


**CLUTCH**

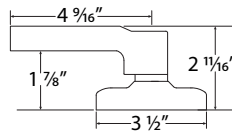
Free turning handle in the locked position,  
without retracting the latch  
to help prevent breaking of handle



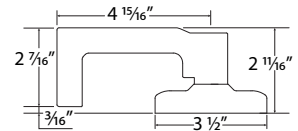
**AT DESIGN**



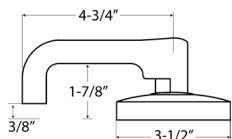
**LON DESIGN**



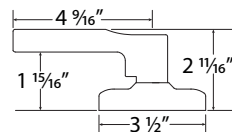
**TAC DESIGN**



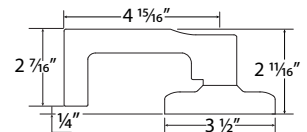
**TUB DESIGN**



**DAN DESIGN**

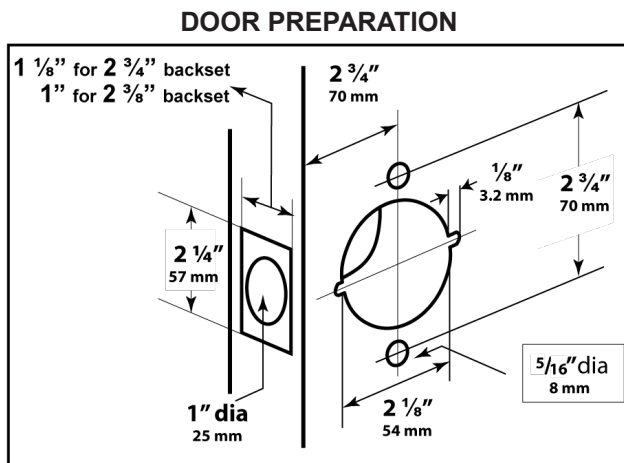


**AUG DESIGN**



FINISHES AVAILABLE		
BHMA SYMBOL	US CODE	DESCRIPTION
622	US1	Flat Black Coated
605	US3	Polished Brass
606	US4	Satin Brass
609	US5	Antique Brass
612	US10	Satin Bronze
613	US10B	Oil Rubbed Bronze
613E	US10BE	Dark Satin Bronze, Equivalent
619	US15	Satin Nickel
625	US26	Polished Chrome
626	US26D	Satin Chrome
630	US32D	Satin Stainless Steel

Refer to price list for stock finishes and functions



**LIFETIME WARRANTY**

**BHMA CERTIFIED**  
Be Safe. Be Secure. Look for the Mark.

**MEETS**  
The Buy American Act



## SPECIFICATIONS

### GENERAL:

Full length 4 3/4" lever handle with 3/8" return on GN and SPA Design. Rose diameter 3 1/2". Key removable outside lever for fast re-keying. Non-handed levers. Concealed mounting screws.

### CLUTCH:

Free turning handle in the lock position without retracting the latch, to deter breaking of handle.

### APPLICATIONS:

For offices, schools, hospitals, apartments, hotel / motel, residential, commercial and public buildings.

### DOOR RANGES:

1 3/8" to 1 3/4" thickness. 2" to 2 1/4" thickness also available on request.

### ANSI STANDARDS:

Meets or exceeds ANSI / BHMA A156.2 Series 4000, Grade 1 requirements.

### CYLINDER & KEYWAYS:

6 pin solid brass "C" keyway standard. Schlage E, Schlage C-K, Russwin D1-2-3-4, Corbin 59/60, OCorbin-Russwin L4, Sargent LA-LB-LC, Falcon / Weiser E, Arrow A, Yale 8, Yale GA and Kwikset. Can also accept Medeco, Assa, Kaba and Cal-Royal (HSK) High Security Cylinders.

### LATCH FACEPLATE:

Standard 2 1/4" x 1 1/8" for 2 3/4" backset.  
Optional 2 1/4" x 1" for 2 3/8" backset.

### STRIKES:

ASA 1 1/4" x 4 7/8" standard. Other strikes available upon request.

### TRIM:

Thru-bolted assembly through door with separate spring cage for each lever.

### HOUSING:

Cold Rolled Steel and Zinc Dichromate finish for rust resistance with precision cast steel retractor. 2 1/8" diameter bore.

### SMALL FORMAT INTERCHANGEABLE CORE (IC):

Interchangeable Core locks will accept compatible 6 or 7 pin cores with **BEST, FALCON and ARROW**. Prefix "IC" before part number.

### LARGE FORMAT INTERCHANGEABLE CORE (IC):

Also available with **SCHLAGE, CORBIN / RUSSWIN, SARGENT and YALE** large format cylinders. For Schlage, Corbin / Russwin, Sargent and Yale format specifications, **refer to page 29**.

### LATCH OPTIONS:

2 3/4" standard, brass with 1/2" throw. 2 3/8", 3 3/4" and 5" backset optional. GND750 deadlatch reversible for flat and beveled door. 3/4" throw anti-friction deadlatch for pair of fire doors.

### ELECTRIFIED LOCKS, TACTILE & LEAD LINING:

available upon request.

**SEE PAGE 28 ON HOW TO ORDER AND FOR LIST OF AVAILABLE FUNCTIONS**

# GENESYS US32D

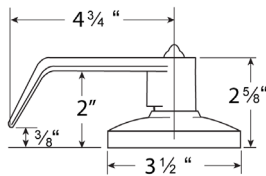
**CLUTCH MECHANISM**  
**FIXED THRU BOLT INSTALLATION**

**Interchangeable Core for BEST, FALCON & ARROW**

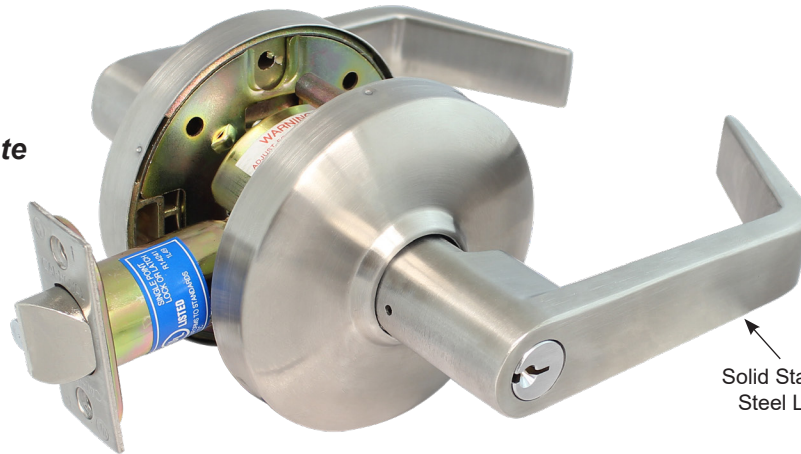
## ALL EXCLUSIVE STAINLESS STEEL EXTERIOR

**Includes:**

- Grade 304 SS Lever,
- Grade 304 SS Rose,
- Corrosion Resistant Material
- ASA Strike and Latch Faceplate



**GN DESIGN**



Solid Stainless Steel Lever

**REFER TO PAGE 28 FOR AVAILABLE FUNCTIONS**

### CLUTCH

Free turning handle in the locked position, without retracting the latch to help prevent breaking of handle.



Meets ADA requirements  
Specially designed for  
Barrier Free Application  
Conforms with ANSI / BHMA A156.2,  
Series 4000, Grade 1 Requirements  
Exceeds 1,000,000 Cycles

## SPECIFICATIONS

### GENERAL

Full length 4 3/4" lever handle with 3/8" return  
Rose diameter 3 1/2". Key removable outside lever for fast re-keying.  
Non-handed levers. Concealed mounting screws.

### CLUTCH

Free turning handle in the lock position without retracting the latch, to deter breaking of handle.

### APPLICATIONS

For offices, schools, hospitals, corrosive environments, commercial and public buildings.

### DOOR RANGES

1 3/8" to 1 3/4" thickness. 2" to 2 1/4" thickness also available on request.

### ANSI STANDARDS

Meets or exceeds ANSI / BHMA A156.2 Series 4000, Grade 1 requirements.

### LATCH FACEPLATE

Standard 2 1/4" x 1 1/8" for 2 3/4" backset. Optional 2 1/4" x 1" for 2 3/8" backset.

### STRIKES

ASA 1 1/4" x 4 7/8" standard. Other strikes available upon request.

### CYLINDER & KEYWAYS

6 pin solid brass "C" keyway standard. Schlage E, Schlage C-K, Russwin D1-2-3-4, Corbin 59/60, Corbin-Russwin L4, Sargent LA-LB-LC, Falcon / Weiser E, Arrow A, Yale 8, Yale GA and Kwikset. Can also accept Medeco, Assa, Kaba and Cal-Royal (HSK) High Security Cylinders.

### TRIM

Thru-bolted assembly through door with separate spring cage for each lever.

### HOUSING

Cold Rolled Steel and Zinc Dichromate finish for rust resistance with precision cast steel retractor. 2 1/8" diameter bore.

### INTERCHANGEABLE CORE (IC)

Interchangeable Core locks will accept compatible 6 or 7 pin cores with BEST, FALCON and ARROW. Refer to page 29 for SCHLAGE, CORBIN / RUSSWIN, SARGENT and YALE large format specifications.

### LATCH OPTIONS

2 3/4" standard, brass with 1/2" throw. 2 3/8", 3 3/4" and 5" backset optional. GND750 deadlatch reversible for flat and beveled door. 3/4" throw anti-friction deadlatch for pair of fire doors.

**ELECTRIFIED LOCKS, TACTILE & LEAD LINING** available upon request.

# GENESYS SERIES FUNCTIONS



## HOW TO ORDER:

For "AT", "SPA", "TUB", "AUG", "DAN", "LON", or "TAC" designs, replace design name.  
 Example: CGN00 entrance in "AT" is CAT00.

<p><b>CGN00</b>  <b>ICCGN00</b>                      ANSI: F109                      FED#161A</p>		<p><b>ENTRANCE / OFFICE LOCK</b>                      Turn / Push button locking. Pushing and turning button locks outside lever requiring use of key until button is manually unlocked. Pushing button locks outside lever until unlocked with key or inside lever is turned.</p>	<p><b>CGN06</b>  <b>ICCGN06</b>                      ANSI: F88                      FED#161C</p>		<p><b>VESTIBULE</b>                      Deadlocking latch bolt operated by lever from either side except when outside lever is locked by key from inside. Latch bolt may be retracted by key in outside lever or by rotating inside lever.</p>
<p><b>CGN01</b>  <b>ICCGN01</b>                      ANSI: F82                      FED#161B</p>		<p><b>ENTRANCE LOCK PUSH BUTTON</b>                      Pushing button in inside lever locks outside lever. Turning inside lever or operating key in outside lever releases button automatically. Closing door does not release button. Button cannot be fixed in lock position. Inside lever always free. Latch bolt automatically deadlocks when door is closed.</p>	<p><b>CGN07</b>  <b>ICCGN07</b>                      ANSI: F110</p>		<p><b>CLASSROOM / INTRUDER</b>                      Latch bolt is operated by rotating the inside lever, or rotating the outside lever only when not locked from the inside or outside key.</p>
<p><b>GN101</b>  <b>ICGN101</b>                      ANSI: F90                      FED#161T</p>		<p><b>DORMITORY NON-CLUTCH</b>                      Deadlocking latch bolt operated by lever from either side except when outside lever is locked by key or by push button on inside lever. Key in outside lever locks or unlocks outside lever. Outside key releases push button when locked from inside. Rotating inside lever or closing the door releases push button. (Non Clutch)</p>	<p><b>CGN09</b>  <b>ICCGN09</b>                      ANSI: F87                      FED#161W</p>		<p><b>INSTITUTION</b>                      Deadlocking latch bolt operated by key in lever from either side. Both lever always fixed.</p>
<p><b>GN02</b>  <b>ICGN02</b>                      ANSI: F91                      FED#161G</p>		<p><b>STORE LOCK NON-CLUTCH</b>                      Deadlocking latch bolt operated by lever from either side, except when both levers are locked by key in lever from either side. (Non Clutch)</p>	<p><b>CGN20</b>                      ANSI: F76                      FED#161L</p>		<p><b>PRIVACY LOCK</b>                      Latch bolt operated by lever from either side. Outside lever is locked by push button inside and unlocked by emergency release outside. Turning inside lever or closing door releases push button.</p>
<p><b>CGN03</b>  <b>ICCGN03</b>                      ANSI: F84                      FED#161R</p>		<p><b>CLASSROOM LOCK</b>                      Deadlocking latch bolt operated by lever from either side except when outside lever is locked from outside by key. When outside lever is locked, latch bolt is operated by turning inside lever.</p>	<p><b>GN30</b>                      ANSI: F75                      FED#161N</p>		<p><b>PASSAGE SET</b>                      Latch bolt operated by lever from either side at all times.</p>
<p><b>CGN04</b>  <b>ICCGN04</b>                      ANSI: F80                      FED#161S</p>		<p><b>COMMUNICATING LOCK</b>                      Deadlocking latch bolt operated by lever from either side. Turning key in either lever locks or unlocks its own lever independently.</p>	<p><b>GN40</b></p>		<p><b>DUMMY LEVER</b>                      Single dummy trim for one side of door. Pull only.</p>
<p><b>CGN05</b>  <b>ICCGN05</b>                      ANSI: F86                      FED#161D</p>		<p><b>STOREROOM LOCK</b>                      Deadlocking latch bolt operated by key in outside lever or by rotating inside lever. Outside lever is always locked.</p>	<p><b>GN50</b>                      ANSI: F89</p>		<p><b>EXIT LOCK</b>                      Blank plate outside. Inside lever always unlocked.</p>

Indicates function available with BEST, FALCON & ARROW Interchangeable Core.

**OTHER FUNCTIONS NOT LISTED AVAILABLE UPON REQUEST**

# GENESYS

**CLUTCH MECHANISM**

**FIXED THRU BOLT INSTALLATION**

**Interchangeable Core for SCHLAGE,  
SARGENT, CORBIN / RUSSWIN, & YALE**

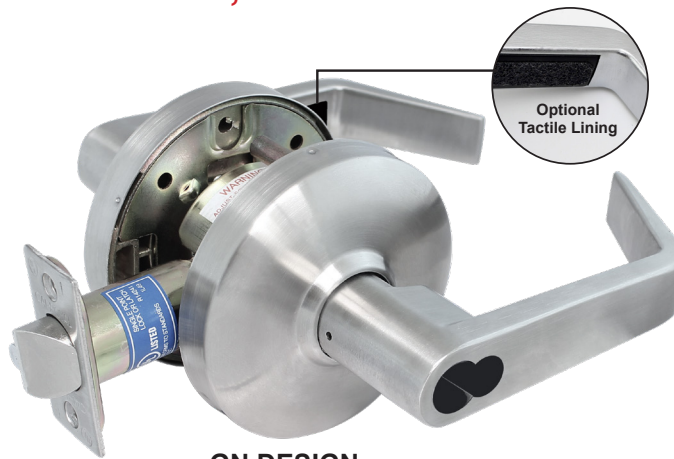


Meets ADA requirements  
Specially designed for  
Barrier Free Application  
Conforms with ANSI / BHMA A156.2,  
Series 4000, Grade 1 Requirements  
Exceeds 1,000,000 Cycles

**CLUTCH**

Free turning handle in the  
locked position, without  
retracting the latch to help  
prevent breaking of handle

**\*\*YALE LFC ONLY AVAILABLE IN  
GN, AT, SPA LEVER DESIGNS**



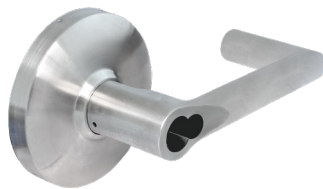
**GN DESIGN**



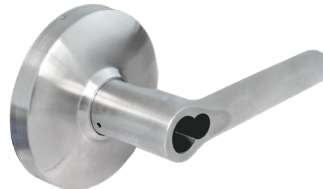
**SPA DESIGN**



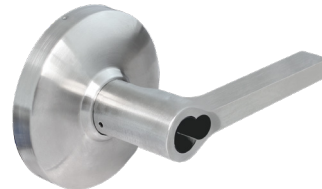
**AT DESIGN**



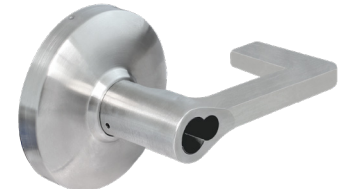
**AUG DESIGN**



**DAN DESIGN**



**LON DESIGN**



**TAC DESIGN**

## SPECIFICATIONS

**GENERAL**

Full length 4 3/4" lever handle with 3/8" return on GN and SPA Design.  
Rose diameter 3 1/2". Key removable outside lever for fast re-keying.  
Non-handed levers. Concealed mounting screws.

**CLUTCH**

Free turning handle in the lock position without retracting the latch,  
to deter breaking of handle.

**APPLICATIONS**

For offices, schools, hospitals, apartments, hotel / motel, residential,  
commercial and public buildings.

**DOOR RANGES**

1 3/8" to 1 3/4" thickness. 2" to 2 1/4" thickness also available on request.

**HOUSING**

Cold Rolled Steel and Zinc Dichromate finish for rust resistance with  
precision cast steel retractor. 2 1/8" diameter bore.

**ANSI STANDARDS**

Meets or exceeds ANSI / BHMA A156.2 Series 4000, Grade 1 requirements.

**TRIM**

Thru-bolted assembly through door with separate spring cage for each lever.

**LARGE FORMAT INTERCHANGEABLE CORE (IC)**

Interchangeable Core locks will accept compatible 6 or 7 pin cores with  
**CORBIN / RUSSWIN**, 6 pin cores with **SARGENT**, and **SCHLAGE** large format  
cylinders in all seven lever designs (**GN, AT, SPA, AUG, DAN, LON, and TAC**);  
6 pin cores **YALE** large format cylinders in **GN, AT, and SPA** lever designs only.

**LATCH OPTIONS**

2 3/4" standard, brass with 1/2" throw. 2 3/8", 3 3/4" and 5" backset optional. GND750  
deadlatch reversible for flat and beveled door. 3/4" throw anti-friction deadlatch for  
pair of fire doors.

**LATCH FACEPLATE**

Standard 2 1/4" x 1 1/8" for 2 3/4" backset.  
Optional 2 1/4" x 1" for 2 3/8" backset.

**STRIKES**

ASA 1 1/4" x 4 7/8" standard. Other strikes available upon request.

**ELECTRIFIED LOCKS, TACTILE & LEAD LINING** available upon request.

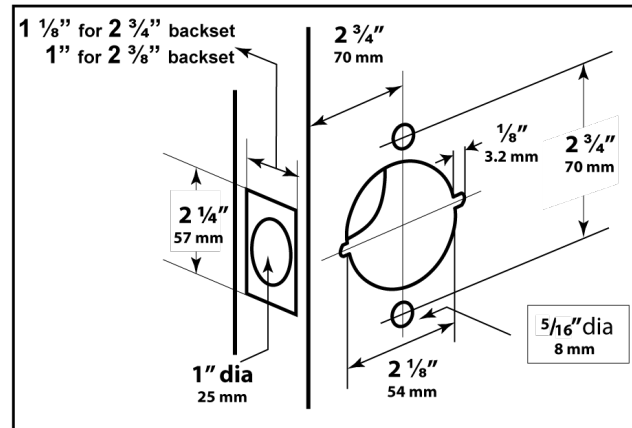
*See reverse page on how to order*

# GENESYS SERIES FINISHES AND FUNCTIONS



FINISHES AVAILABLE		
BHMA SYMBOL	US CODE	DESCRIPTION
605	US3	Polished Brass
606	US4	Satin Brass
609	US5	Antique Brass
612	US10	Satin Bronze
613	US10B	Oil Rubbed Bronze
613E	US10BE	Dark Satin Bronze, Equivalent
619	US15	Satin Nickel
625	US26	Polished Chrome
626	US26D	Satin Chrome
630	US32D	Satin Stainless Steel

## DOOR PREPARATION



Refer to price list for stock finishes and functions

### HOW TO ORDER SCHLAGE LFIC

#### Design:

CGN / CSPA / CAT / CAUG /  
CDAN / CLON / CTAC

- Replace "ICGYS" with "ICSC"
- Add: DESIGN + FUNCTION + FINISH when ordering.
- Example: ICGYS00 US26D in "SPA" design, Entrance function with US26D finish will be: "ICSCCSPA00 US26D"

### HOW TO ORDER CORBIN / RUSSWIN, SARGENT, YALE LFIC

#### Keyway: RUSIC / SARIC / YALIC

RUSIC - Corbin / Russwin Large Format IC  
SARIC - Sargent Large Format IC  
YALIC - Yale Large Format IC

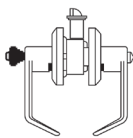
#### Design:

CGN / CSPA / CAT /  
CAUG / CDAN / CLON  
/ CTAC

**\*\*Note:** Yale LFIC is only available in GN, AT, SPA lever designs

- Specify: Replace "ICGYS" with specified KEYWAY,
- Add: DESIGN + FUNCTION + FINISH when ordering.
- Example: "ICGYS00 US26D with Corbin/Russwin Keyway, in "SPA" design, Entrance function with US26D finish will be: "RUSICCSPA00 US26D"

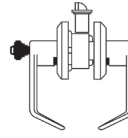
● ICGYS00  
RUSICCGN00  
SARICCGN00  
YALICCGN00  
ANSI: F109  
FED#161A



#### ENTRANCE / OFFICE LOCK

Turn / Push button locking. Pushing and turning button locks outside lever requiring use of key until button is manually unlocked. Pushing button locks outside lever until unlocked with key or inside lever is turned.

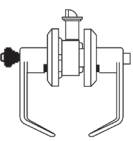
● ICGYS05  
RUSICCGN05  
SARICCGN05  
YALICCGN05  
ANSI: F86  
FED#161D



#### STOREROOM LOCK

Deadlocking latch bolt operated by key in outside lever or by rotating inside lever. Outside lever is always fixed.

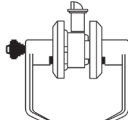
● ICGYS101  
RUSICCGN101  
SARICCGN101  
YALICCGN101  
ANSI: F90  
FED#161T



#### DORMITORY NON-CLUTCH

Deadlocking latch bolt operated by lever from either side except when outside lever is locked by key or by push button on inside lever. Key in outside lever locks or unlocks outside lever. Outside key releases push button when locked from inside. Rotating inside lever or closing the door releases push button. (Non Clutch)

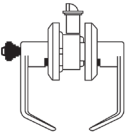
● ICGYS06  
RUSICCGN06  
SARICCGN06  
YALICCGN06  
ANSI: F88  
FED#161C



#### VESTIBULE

Deadlocking latch bolt operated by lever from either side except when outside lever is locked by key from inside. Latch bolt may be retracted by key in outside lever or by rotating inside lever.

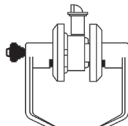
● ICGYS03  
RUSICCGN03  
SARICCGN03  
YALICCGN03  
ANSI: F84  
FED#161R



#### CLASSROOM LOCK

Deadlocking latch bolt operated by lever from either side except when outside lever is locked from outside by key. When outside lever is locked, latch bolt is operated by turning inside lever.

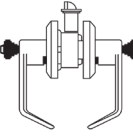
● ICGYS07  
RUSICCGN07  
SARICCGN07  
YALICCGN07  
ANSI: F110



#### CLASSROOM / INTRUDER

Latch bolt is operated by rotating the inside lever, or rotating the outside lever only when not locked from the inside or outside key.

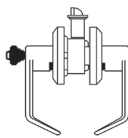
● ICGYS04  
RUSICCGN04  
SARICCGN04  
YALICCGN04  
ANSI: F80  
FED#161S



#### COMMUNICATING LOCK

Deadlocking latch bolt operated by lever from either side. Turning key in either lever locks or unlocks its own lever independently.

● ICGYS09  
RUSICCGN09  
SARICCGN09  
YALICCGN09  
ANSI: F87  
FED#161W



#### INSTITUTION

Deadlocking latch bolt operated by key in lever from either side. Both lever always fixed.

● Indicates function available with SCHLAGE, CORBIN / RUSSWIN, SARGENT and YALE Interchangeable Core.

OTHER FUNCTIONS NOT LISTED AVAILABLE UPON REQUEST. SEE PAGE 108 FOR SPECIFICATION ON CYLINDERS