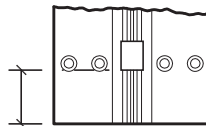


#12 x 82° F.H. countersunk wood or machine screw (38 places).

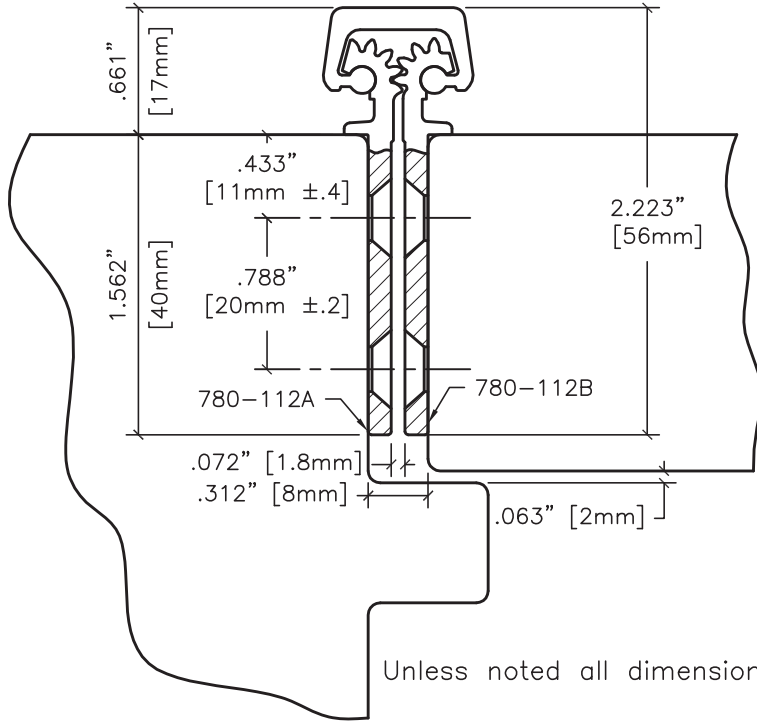


32 bearings spaced equally @ 2.563" center to center.



1.4375" [36.5125mm] Ref.

End Of Hinge To First Bearing, Both Ends.



Unless noted all dimensions $\frac{\pm.020}{\pm.5mm}$

Vertical Hole Spacing

Non cumulative tolerances on hole to hole spacing.

	Metric (mm)	Decimal (in.)
A	2108.0 $^{+0.00}$ _{-0.80}	82.992 $^{+0.000}$ _{-0.030}
B	40.0 ±.25	1.575 ±.010
C	85.0 ±.20	3.346 ±.008
D	130.0 ±.20	5.118 ±.008
E	200.0 ±.20	7.874 ±.008
F	257.0 ±.20	10.118 ±.008



6605 Flotilla St.
City of Commerce
CA 90040 USA
Tel: (323) 888-6601
FAX: (323) 888-6699
Website: cal-royal.com
Email: sales@cal-royal.com

ITEM NO.:	DESCRIPTION:	SCALE:
CRHD78112083	FULL CONCEALED MORTISE 83" HEAVY DUTY CONTINUOUS GEARED HINGE	NOT TO SCALE
ANSI:	UNIT:	VERSION:
	inches [mm]	ver. 1.0 rev. 04/12
		BY:
		scarlos