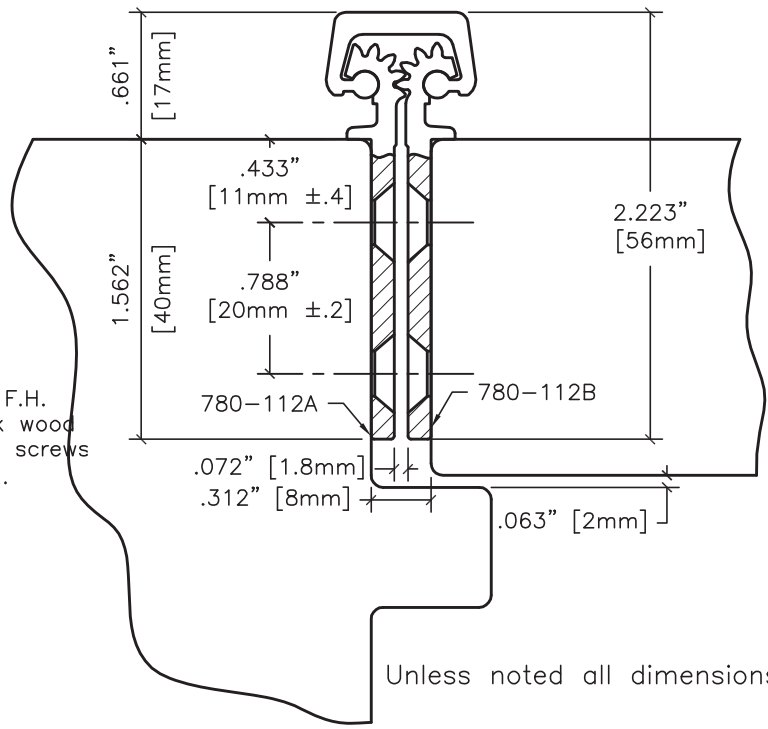


#12 x 82° F.H.  
countersunk wood  
or machine screws  
(38 places).



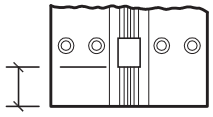
Unless noted all dimensions  $\frac{\pm.020''}{\pm.5mm}$

### Vertical Hole Spacing

Non cumulative tolerances on hole to hole spacing.

	Metric (mm)	Decimal (in.)
A	2414.0 $\pm 0.000$	95.039 $\pm 0.000$
B	40.0 $\pm 0.25$	1.575 $\pm 0.010$
C	85.0 $\pm 0.20$	3.346 $\pm 0.008$
D	200.0 $\pm 0.20$	7.874 $\pm 0.008$
E	260.0 $\pm 0.20$	10.236 $\pm 0.008$
G	277.0 $\pm 0.20$	10.906 $\pm 0.008$

37 bearings  
spaced equally  
@ 2.563"  
center to center.



1.1024"  
[28mm] Ref.

End of hinge to first bearing, both ends.