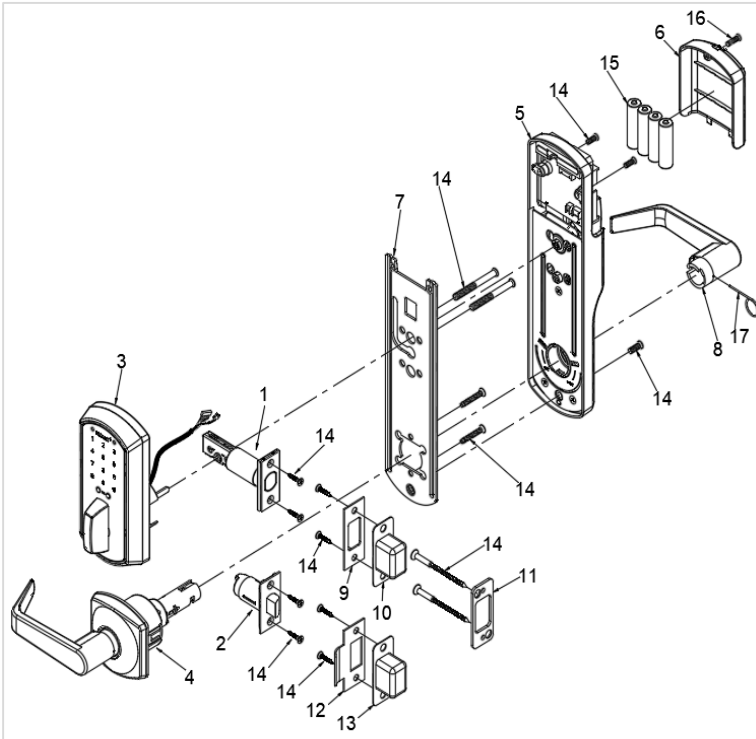


INSTALLATION INSTRUCTIONS

EJHIL Series - Touchscreen Electronic Interconnected Lock with Clutch locking mechanism



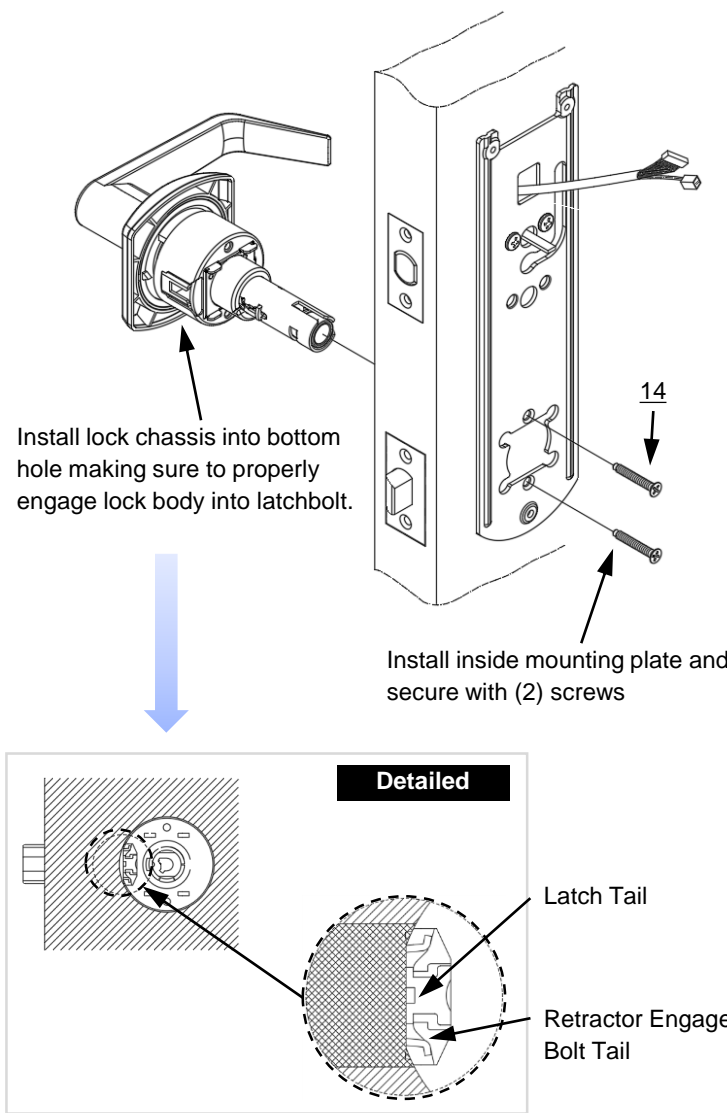
IMPORTANT NOTES

DO NOT use a power drill for installation

- Install and test lock with door open to avoid being locked out.
- Please use four alkaline batteries for the best performance.
- Read the precautions and instructions in this manual before installing and using this lock. Save this manual for future reference.

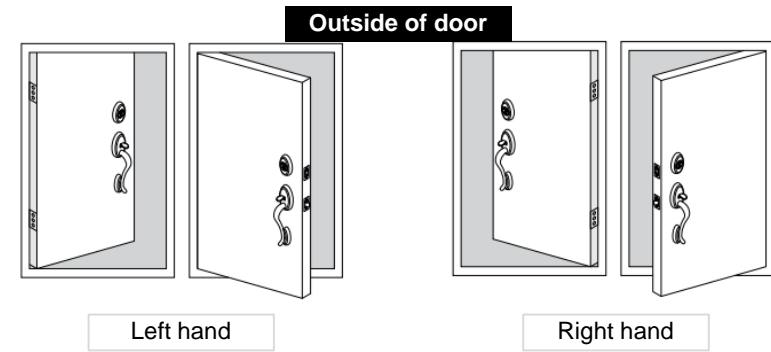
4. Install the bottom part of the lock.

- A. Install the handing plate into the lever assembly.



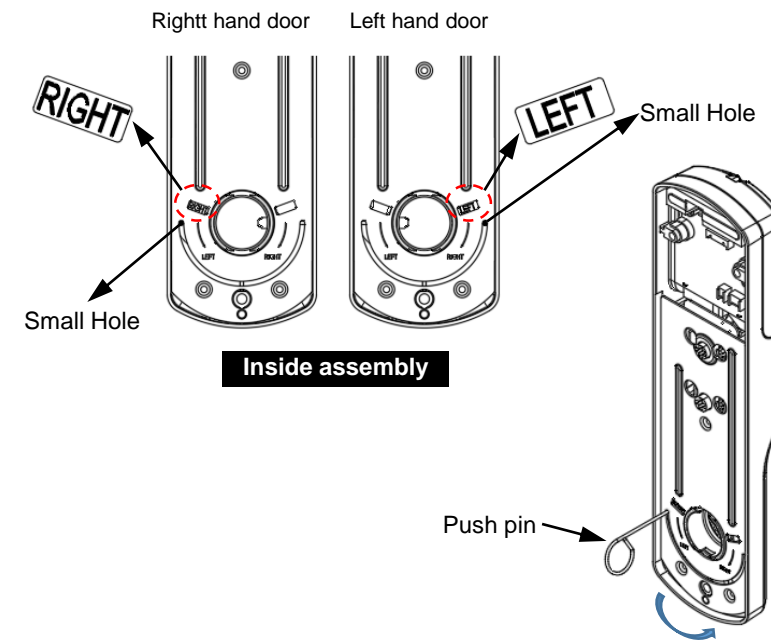
5. Determine the Handing

Determine the handing of your door.



6. How to change Door Hand

- A. The standard setting from factory is for right-hand door.
B. Check right-hand or left hand.
C. Insert push pin provided into a small hole at the end of semicircle as shown on following diagram.

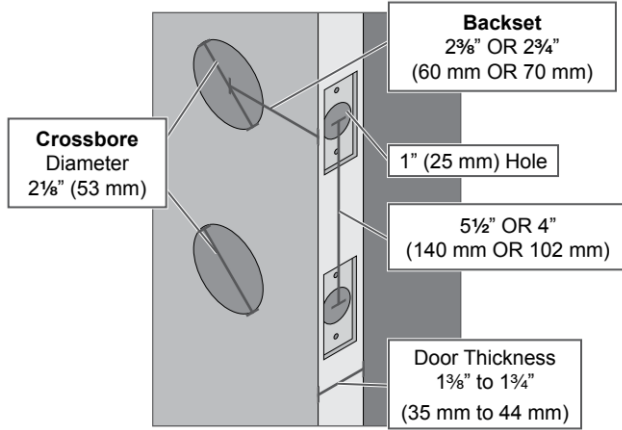


Prepare for installation

1. Check door dimension

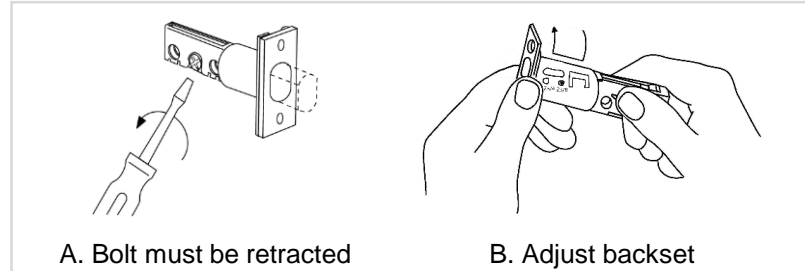
TEMPLATE and use to mark the door, drill holes, and chisel out the mortise.

- A. If your door is pre-drilled, check the hole sizes to make sure they are the proper size. If they are the proper size, skip to the Installation section.
B. Drill from both sides of the door to prevent wood splitting.



2. Adjust bolt length, if necessary

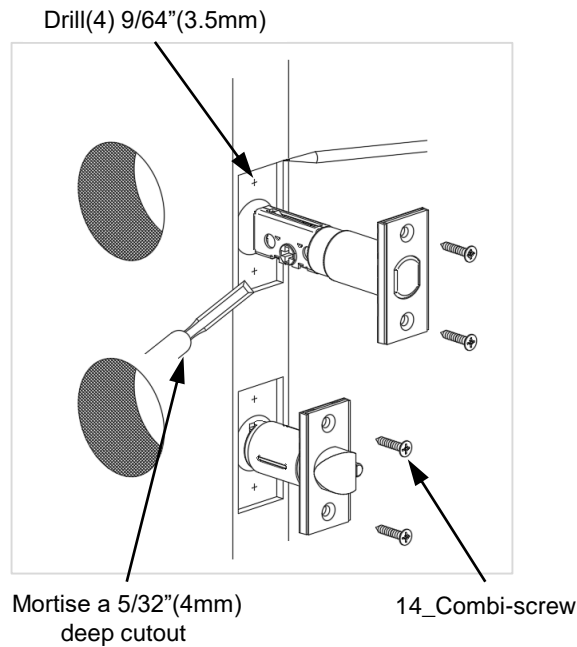
- A. If the backset of your door is 2-3/8\" (60mm), you need to adjust your bolt.
B. Press on the bolt with thumb. Rotate faceplate and push down to move housing to next position.



Install the Lock

1. Install the bolt and latch.

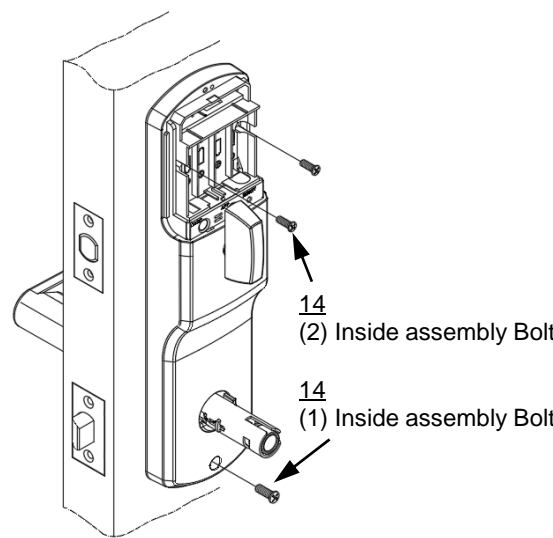
Install the bolt and the latch into the door.



- A. Insert bolt and latch into hole. Trace around faceplate.
B. Chisel out wood until faceplate fits flat with door edge.
C. Drill(4) 9/64\" (3.5mm) holes and secure bolt and latch with combi-screws supplied.

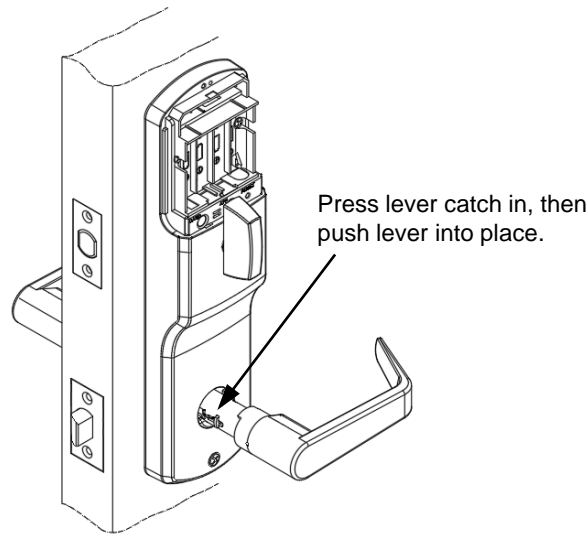
B. Install the inside assembly.

Secure the inside assembly with three screws.



8. Install the lever.

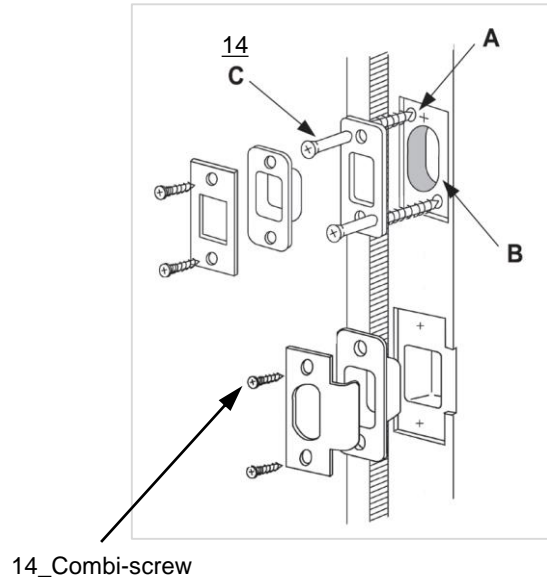
Install the lever on the inside of the door.



2. Install the strikes.

Install the strikes into the frame.

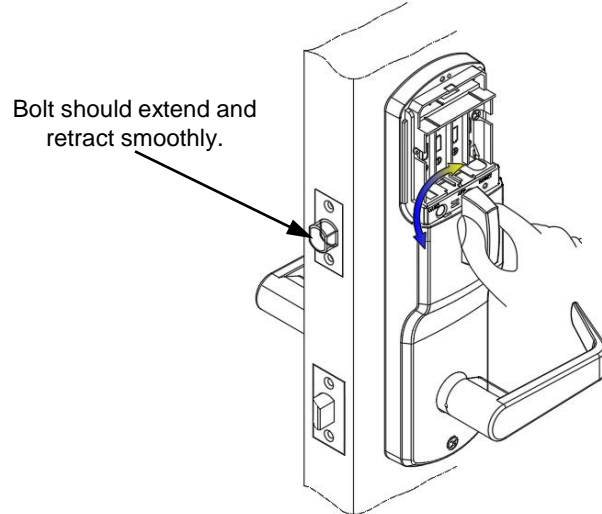
★ Install all the parts shown for maximum security.



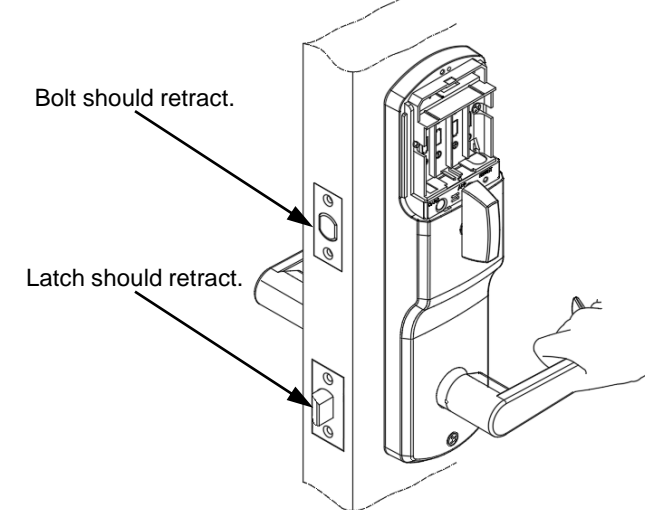
- A. Place reinforcer in cutout with screw holes as shown. Mark and drill 1/8\" (3.2mm) pilot holes.
B. Chisel about 1/4\" (6mm) deep for flush fit of reinforcer, box and strike.
C. Install reinforcer with 3\" (76mm) wood screw.
D. Install strike box and strike.

9. Test the lock

- A. Extend and then retract the bolt using the inside bolt throw.

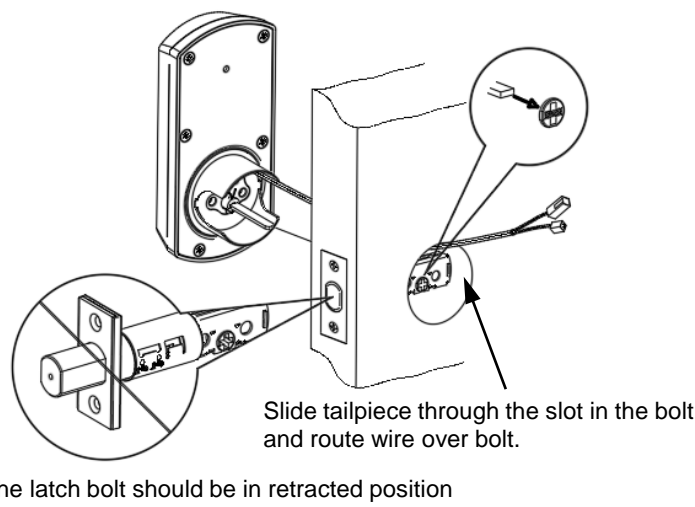


- B. Extend the bolt using the bolt throw and then rotate the inside lever.

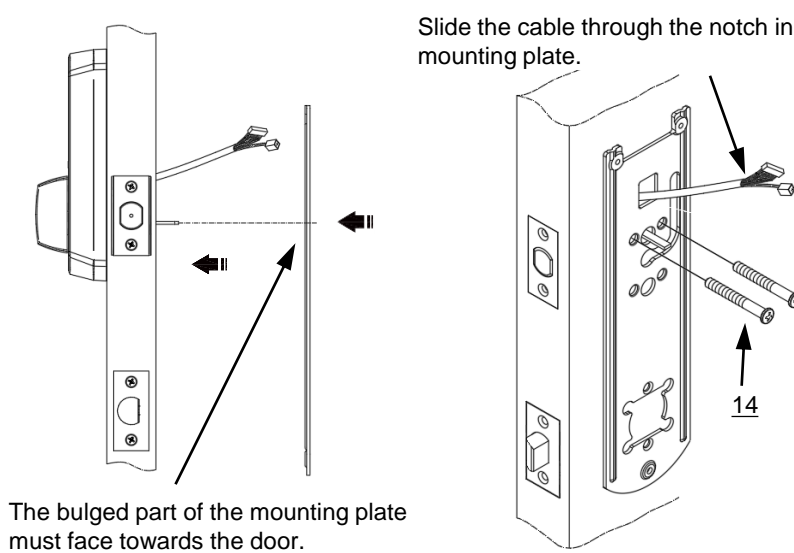


3. Install the top part of the lock.

- A. Install the outside deadbolt assembly on the outside of the door.

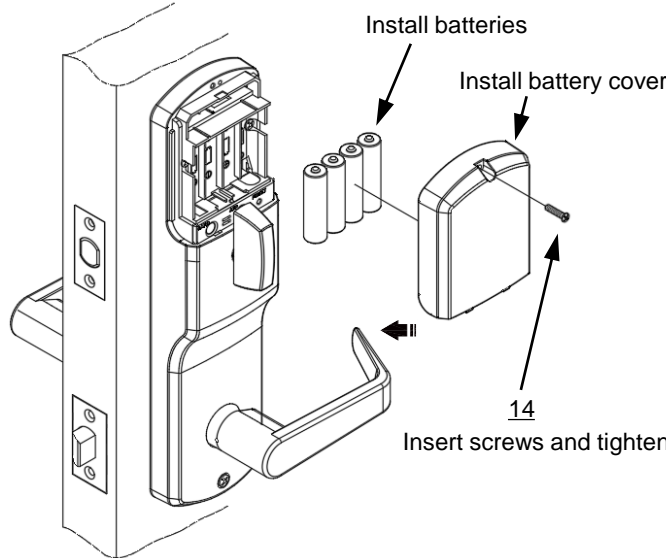


- B. Install the outside lock assemblies



10. Install the batteries and Cover.

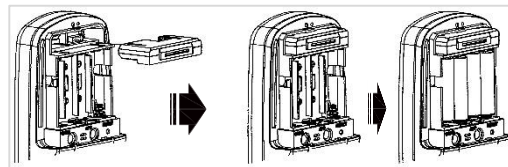
Please use four alkaline batteries for better performance.



11. Installation Option

Adding the Key Module to your lock(optional)

★ **IMPORTANT: The batteries must be removed prior to removing and/or inserting the Key Module:**



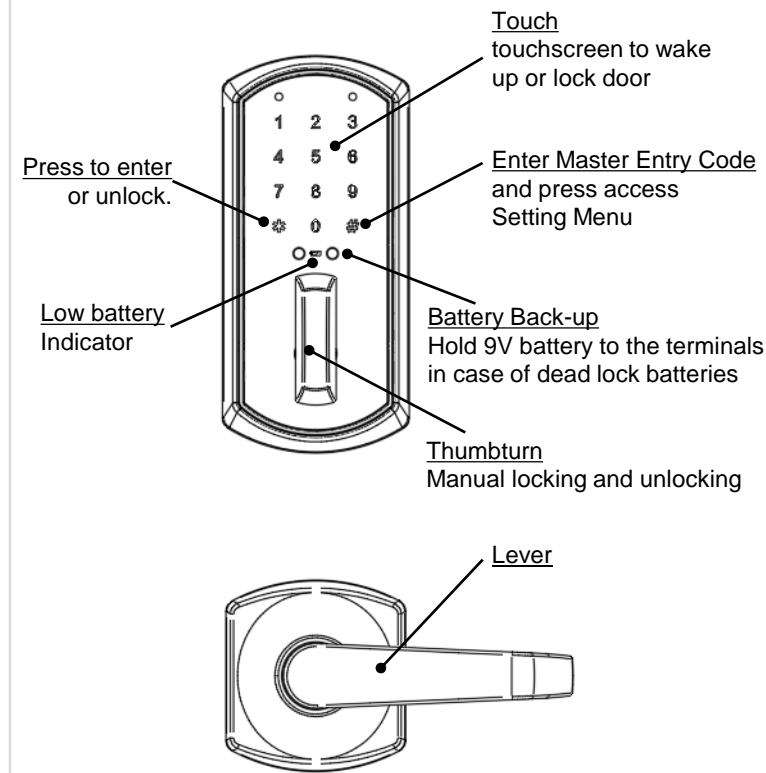
1. Install the Key Module into the slot above the battery compartment
2. Open the app on your smartphone.
3. Follow the app programming instructions for enrolling a new device.

PROGRAMMING GUIDE

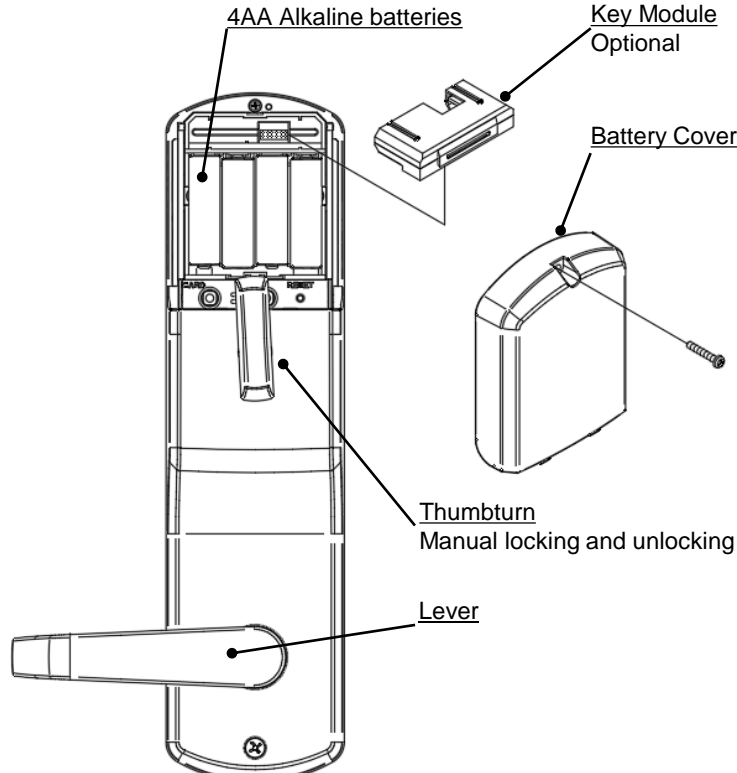
Take the time to read through this guide to familiarize yourself with the features and operation of the lock, and its quick and easy programming procedures.

Programming Features

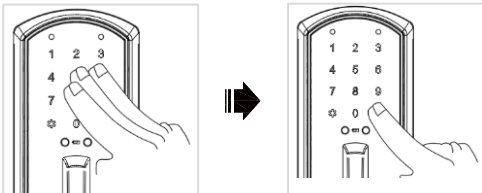
Touchscreen Escutcheon



Inside Escutcheon



4. Customizing Lock Using Settings Menu



★ Enter digit corresponding to the function to be performed followed by the # button.

4 One-Time User Code

4 # ➡ Enter 4-6 digit Entry User Code # ➡ # ➡ *

5 Setting Up/Releasing Passage Mode

5 # ➡ 1 Enable *
3 Disable *

★ Another method to disable Passage Mode:

➡ Enter Master Entry Code # ➡ 5 *

7 Setting Up/Releasing Lockout Mode

7 # ➡ 1 Enable *
3 Disable *

0 Setting Up/Releasing Lockout Mode

0 # ➡ 1 Volume # ➡ 1 ~ 4 *
3 Re-lock Time # ➡ 1 sec ~ 9 sec *

★ Sound Volume: 1 minimum ~ 3 maximum 4 mute
★ Here is an example of how to set Auto Lock to 9 seconds :

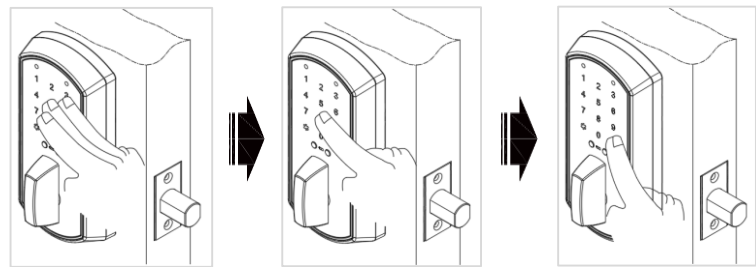
➡ Enter Master Entry Code # 0 # 3 Re-lock Time # 5 *

Stand-Alone Access Control System is a series of State-of-the-Art Microprocessor-Based programmable Touchscreen-Entry Security Locks.

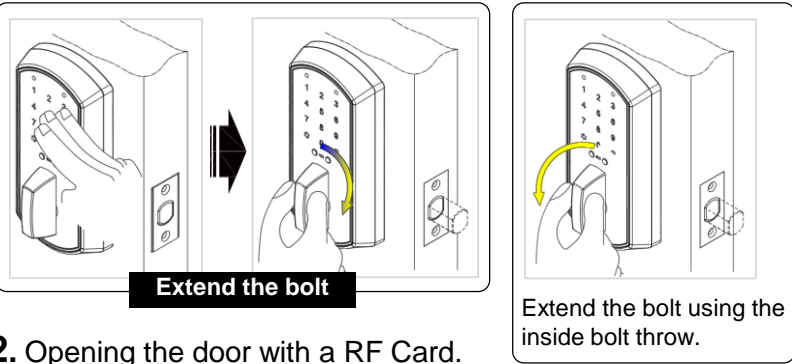
Operation of lock

1. Opening the door with a Pin Code.

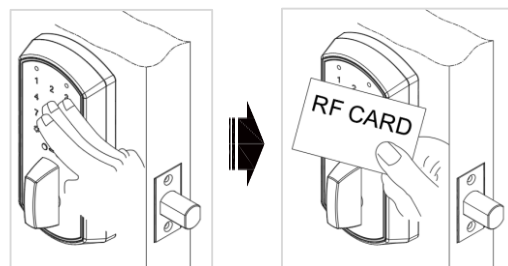
Factory Default : 123456



Touch touchscreen with back of hand or fingers to activate. Enter a registered PIN Code. Press the [*] button to confirm the selection.



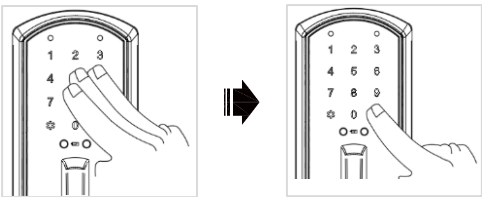
2. Opening the door with a RF Card.



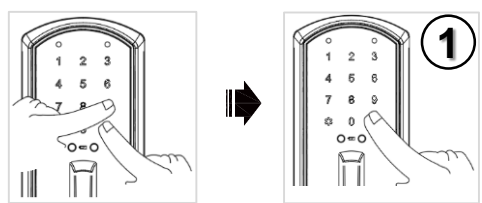
Touch touchscreen with back of hand or fingers to activate. Place a registered RF Card in front of the touchscreen like above figure.

6. Deleting RF Cards

Master entry code must be changed first.



1 Enter Master Entry Code
2 Press [#]



1 Enter Master Entry Code
2 Press [#]



1 Enter Master Entry Code
2 Press [#]

1 Enter the Card Register No. (0-499)
2 Press [#]

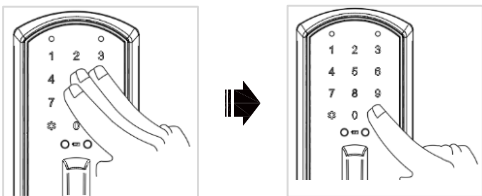
1 Enter the Card Register No. (0-499)
2 Press [#]

Programming

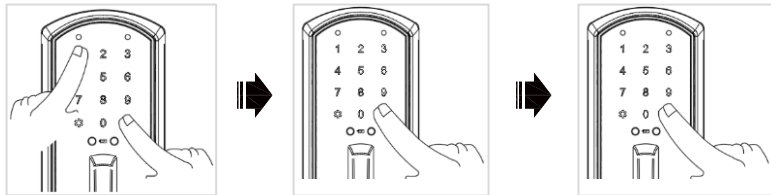
1. Change Default Master Entry Code

The master entry code is used to change the lock settings. A security best practice is to set your master entry code with 6 digits and create a separate code that is used daily to lock and unlock the door.

★ The lock is preset at the factory with Master PIN Code [123456].



1 Enter Master Entry Code
2 Press [#]



1 Enter 6 digit new Master Entry Code
2 Press [#]

1 Enter 6 digit new Master Entry Code
2 Press [#]

To end programming
1 Press [*]

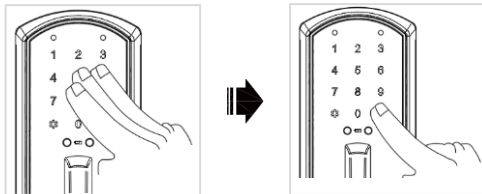
7. Setting Definitions

| Settings | Default Setting | Definition |
|------------------------|------------------|--|
| Master Entry Code | 123456 [6 digit] | The Master Entry Code is used for programming and for feature settings. The Master code will also operate (unlock/lock) the lock. |
| User Code | 4~6 digits | The User PIN code is used for operating the lock. |
| One-Time User Code | 4~6 digits | This PIN Code can only be used once and the PIN information is deleted automatically after use. User can program in up to 2 different One-Time User PIN Codes. |
| Lockout Mode | Disabled | his feature is enabled by the Master Entry Code. When enabled, it restricts all Entry Code access (except Master). When attempting to enter a code the lock is in Lockout Mode, the RED will appear on the screen. |
| Auto Re-lock | 5 Seconds | When enabled, After successful code entry and the unit unlocks, it will automatically re-lock after 1~9 seconds. |
| Low Battery | Red LED | When battery power is low, the low battery icon will begin blinking. If battery power is completely lost, the key cylinder can be used. |
| Beep Sound | 2 levels | The Beep Sound can be turned on/off if desired. |
| Shutdown Time | 60 Seconds | The Lock will shutdown (flashing RED) for sixty(60) seconds and not allow operation after the wrong code entry limit (5 attempts) has been met. |
| Wrong Code Entry Limit | 5 Times | After five (5) unsuccessful attempts at entering a valid Entry Code, the lock will shut down and not allow operation for sixty (60) seconds. |

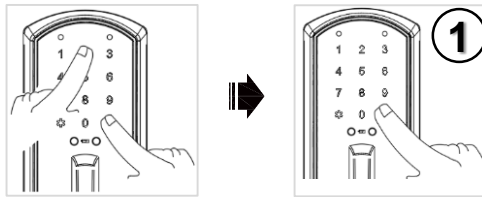
2. Creating Entry User Codes

Master entry code must be changed first.

★ Max Entry User Code = 500

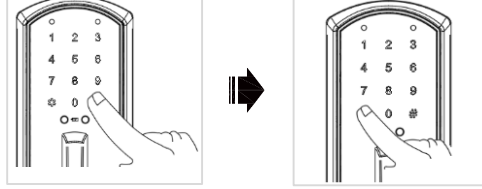


1 Enter Master Entry Code
2 Press [#]



1 Press [2]
2 Press [#]

1 Enter 4-6 digit Entry User Code
2 Press [#]



1 Press [2]
2 Press [#]

1 Enter 4-6 digit Entry User Code
2 Press [#]

1 Enter 4-6 digit Entry User Code
2 Press [#]

8. Resetting Lock to Factory Default

- Remove the battery cover and batteries.
- After 10 seconds reinsert the batteries.
- Touch touchscreen with back of hand or fingers to activate within 5 seconds.
- Enter the [#] button 5 times and factory defaults Master Code [123456] [#] and [30] [#] and press the [1] [*] button.

➡ 123456 # ➡ 30 # ➡ 1 *

- A little later, the number pad is turned off and reset is complete.

Note:

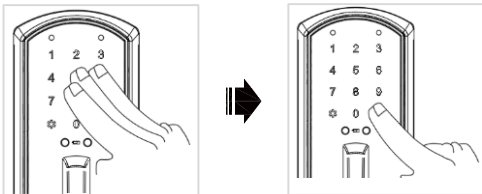
All registered Master and User PIN Code data, etc., will be deleted, and the lock will reset to the factory default.

9. Battery Replacement

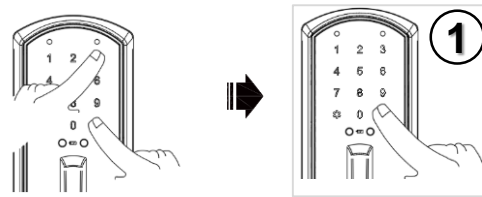
When battery power is low, the low battery icon will begin blinking with beep sound. Always replace weak batteries as soon as possible. The locks use four (4) AA-size 1.5 volt alkaline batteries.

3. Deleting Entry User Codes

To delete one Entry Code, you must enter the Entry Code you wish to delete. Enter 4-8 digit entry code.

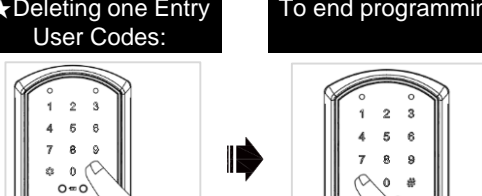


1 Enter Master Entry Code
2 Press [#]



1 Press [3]
2 Press [#]

1 Deleting one Entry User Code
2 Press [#]



1 Press [#]

1 Deleting one Entry User Code
2 Press [#]

10. Troubleshooting

| Symptom | Suggested Action |
|--|---|
| Lock does not respond – door is open and accessible. | <ul style="list-style-type: none">Keypad becomes active when touch touchscreen is pressed. Verify contact with the touchscreen.If keypad numbers are visible, check they respond when pressed.Check batteries are installed and oriented correctly (polarity) in battery case.Replace batteries* if batteries are dead.Check keypad cable is fully connected and not pinched. |
| Lock does not respond – door is locked and inaccessible. | <ul style="list-style-type: none">Batteries may not have enough power. Replace batteries.Apply a 9V battery to terminals front the keypad for backup power option. |
| Lock beeps indicating code acceptance, but door will not open | <ul style="list-style-type: none">Check for any foreign objects between door and frame.Check that cable is firmly connected to inside lock. |
| Entry Codes will not register | <ul style="list-style-type: none">Entry Codes must consist of 4 to 6 digits.The same Entry Code cannot be used for multiple users.Entry Codes are set by the Master Entry Code, which is set first. Contact the Master user.Entry Codes must be entered within 10 seconds (while keypad is active) or process will have to be restarted. |
| Upon entering Entry Code and pressing * key, the lock displays "invalid code" error or lock times out without responding | <ul style="list-style-type: none">Verify entered code is a valid, previously programmed, 4 to 6 digit code.All Code Lockout is enabled. Only the Master Entry Code can change All Code Lockout. Contact the Master user. |
| Lock responds "Low Battery" | <ul style="list-style-type: none">This is the alert to replace the batteries. Replace all four (4) batteries* with new AA Alkaline batteries. |
| Upon entering Entry Code and pressing the * key, lock responds "Beep 5 time". | <ul style="list-style-type: none">The digits entered were incorrect or incomplete. Re-enter the correct code followed by the * key. |
| I can't change the Master Entry Code. | <ul style="list-style-type: none">There was a delay while entering the new Master PIN Code. The number pad must be illuminated while the new Master PIN Code is being entered. Also, after entering the first digit the next digit must be entered within 10 seconds.If batteries are discharged, try again after replacing the batteries.Refer to the changing the Master PIN Code section in the programming instructions and try changing again. |