

ELDB-89

ELECTRONIC DEADBOLT

User's Guide



ELECTRONIC DEADBOLT LOCK


REMOTE CONTROL INSTRUCTION


G00-000010
Rev. 11/10-00

BASIC FUNCTIONS AND COMPONENTS

LOCK AND UNLOCK

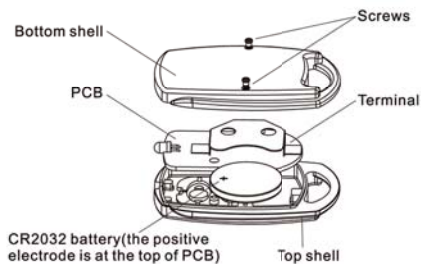
Note: 1.The enclosed remote controls have been preset.
2.Remote controls must be pointed at the outside face of the lock.

LOCK: Press the button , then the green LED on the key pad will light and beep will sound once.

UNLOCK: Press the button , then the green LED on the key pad will light and beep will sound once.

CHANGE THE BATTERY

- 1.Loose 2 screws before open the bottom shell.
- 2.Take the PCB out.
- 3.Push the battery out.
- 4.Push into the new battery.
- 5.Replace the PCB.
- 6.Close the bottom shell and tighten the screws.





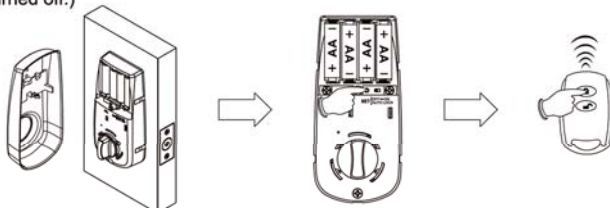
1

SETTING MODE

ADD A REMOTE CONTROL

Following these steps:

1. Press [SET] button for 2 seconds until the Red LED lights up and "beep" sounds twice. You are now under programming mode.
2. Enter 123456 (or current programming code) and press . Enter (20) then press  again. Press any buttons on the remote control until the Green LED is turned on. The Red LED will light continuously for 10 seconds. This lock will have new remote controls sets. (You can add other remote controls continuously before red light is turned off.)





Remote control capacity: 10 maximum.

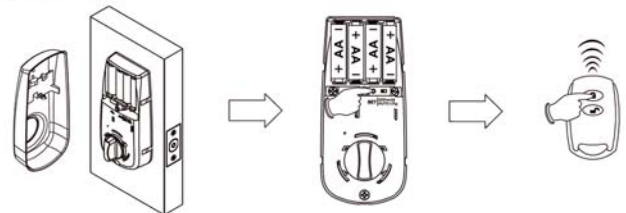
2

SETTING MODE

DELETE INDIVIDUAL REMOTE CONTROL

Following these steps:

1. Press [SET] button for 2 seconds until the Red LED lights up and "beep" sounds twice. You are now under programming mode.
2. Enter 123456 (or current programming code) and press . Enter (30) then press  again. Press any buttons on the remote control you want to delete from the lock. The Red LED will light continuously for 10 seconds. The lock will have the existing remote controls deleted. (You can delete other remote controls before the Red LED light is turned off.)





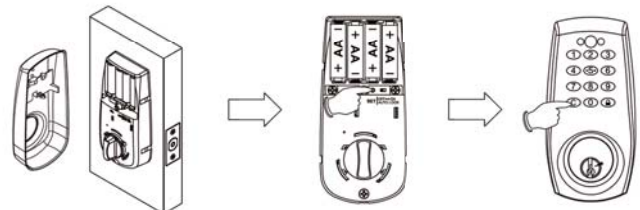
3

SETTING MODE

DELETE ALL EXISTING REMOTE CONTROLS AT ONCE

Following these steps:

1. Press [SET] button for 2 seconds until the Red LED lights up and "beep" sounds twice. You are now under programming mode.
2. Enter 123456 (or current programming code) and press . Enter (41) then press  again. Press button C until the Green LED is turned on. The Red LED will light continuously for 10 seconds. This lock will have all existing remote controls deleted.



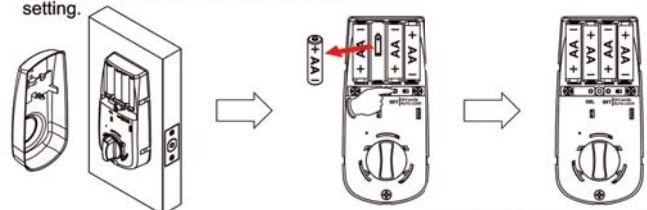
4

SETTING MODE

RESTORE FACTORY SETTING

Following these steps:

1. Remove one battery away from the battery pack.
2. Press [SET] button and connect the battery back simultaneously. The Green LED will light and then "beep" will sound twice. All functions will be restored back to factory setting.



Note : All existing user codes, existing remote controls and current programming code will be deleted. Lock will be restored to preset programming code with programming code of 1-2-3-4-5-6. Please change the programming code and add a new user code and a new remote control immediately before operating the lock.

5