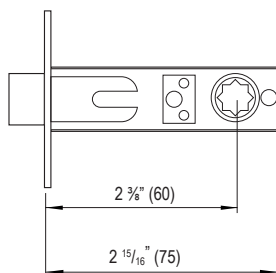
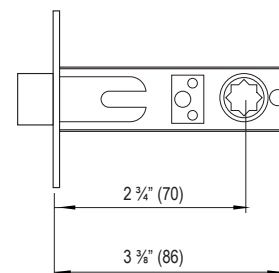


LATCHES



CTPAS238 (Passage)
CTPRI238 (Privacy)
45 Degree Latch Retraction
 (Grade 3)
Backset: 2 3/8" (60)
Function: Passage, Privacy
Faceplate: 1" x 2 1/4" (25 x 57)
Material: Stainless Steel



CTPAS234 (Passage)
CTPRI234 (Privacy)
45 Degree Latch Retraction
 (Grade 3)
Backset: 2 3/4" (70)
Function: Passage, Privacy
Faceplate: 1" x 2 1/4" (25 x 57)
Material: Stainless Steel

UNITS: in (mm)



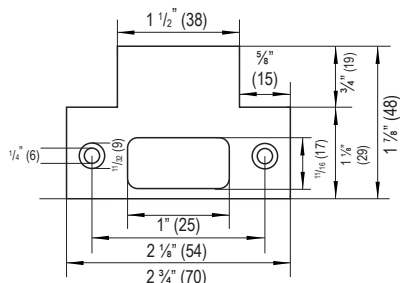
APS PVC
Anti-Pry Shield (PVC)
 (Optional)
Backset: 2 3/8" (60) standard, 2 3/4" (70) optional
Door Thickness: 1 3/8" (35) and 1 3/4" (44)
Material: Heat Resistant PVC



APS ZINC
Anti-Pry Shield (Zinc Alloy)
 (Optional)
Backset: 2 3/8" (60) standard, 2 3/4" (70) optional
Door Thickness: 1 3/8" (35) and 1 3/4" (44)
Material: Zinc Alloy

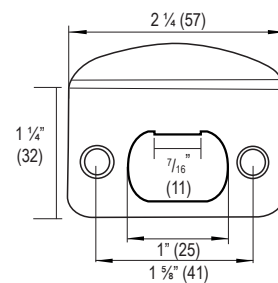
STRIKES

All latches come with both T-Strike and Full-lip Strike standard



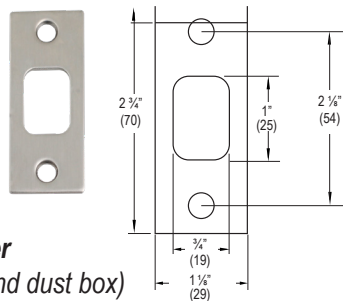
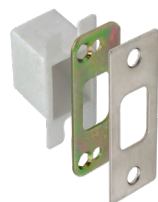
TS
T-Strike
 1 1/8" x 2 3/4", with lip 1 1/2" x 1/2"

UNITS: in (mm)



FLS
Full-lip Strike 1/4" Corner
 1 3/4" x 2 1/4"

UNITS: in (mm)

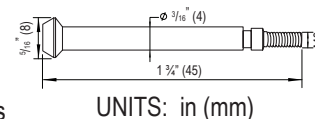


T2STRK
Deadbolt Strike 1/8" Corner
 (with reinforcement plate and dust box)
 1 1/8" x 2 3/4" (29 x 70)

UNITS: in (mm)



CTPRIPIN
Privacy Pin
 Comes with all privacy latches



UNITS: in (mm)



ALLENKEY
Allen Key
 Comes with all locksets



EMRELPIN
Emergency Release Pin
 Comes with all privacy latches