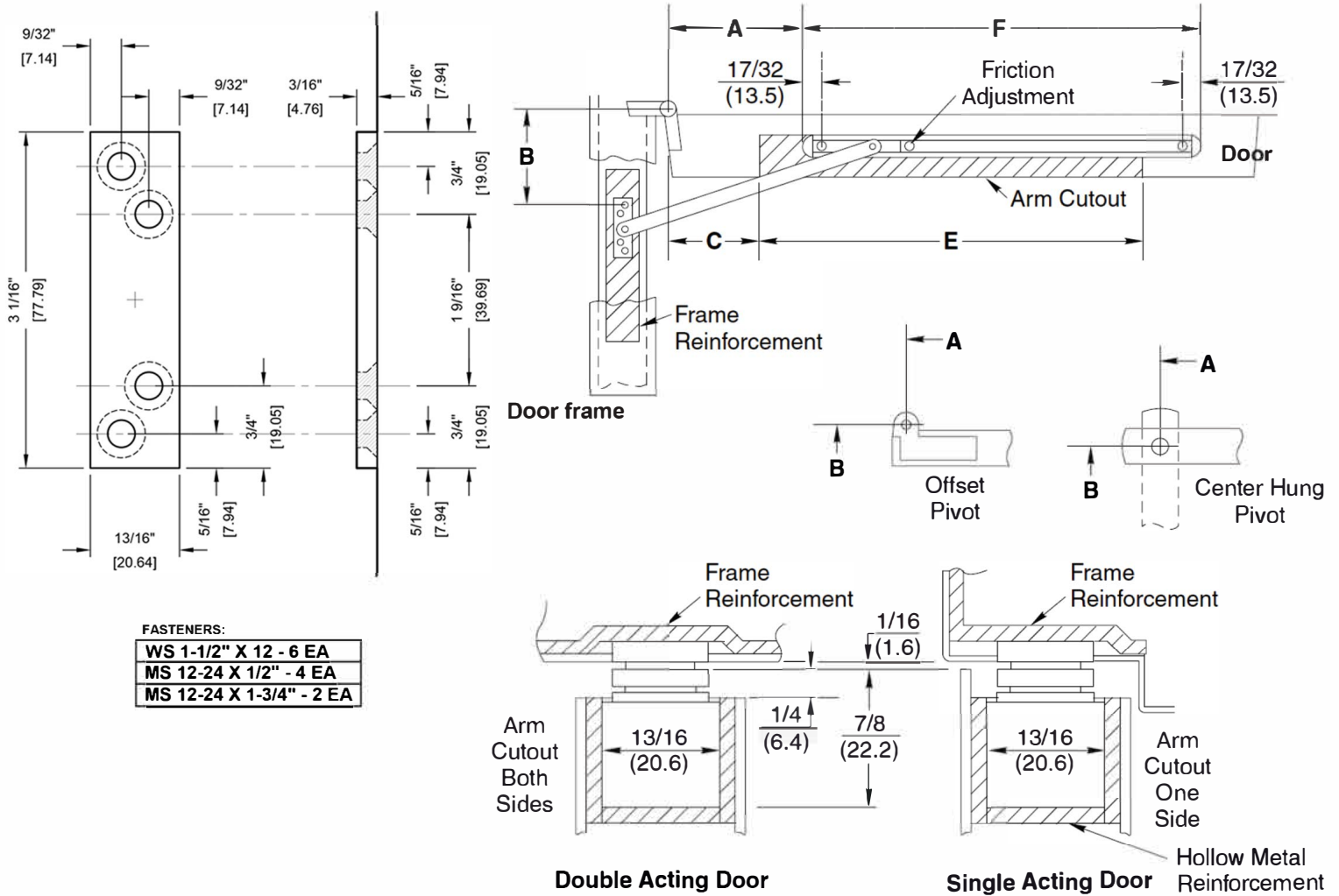




CON770 Series Installation Instructions

(Medium Duty, Concealed Mount - MULTI-FUNCTION)



Installation:

1. Select proper dimensions from the dimension chart.
2. Locate "B" dimension on frame and mortise 3/16" deep for jamb bracket.
3. Locate "A" and "F" dimensions on center line of door and mortise 13/16" wide x 7/8" deep for channel. 1/16" head clearance shown. Coordinate the arm and rail cutout dimensions if head clearance varies.
4. Locate "C" and "E" dimensions on top of door and mortise 1/4" deep as shown for arm clearance.
5. Install door stop with screws provided.

Notes:

1. All hollow metal frames are to be provided with 3/16" min. thickness x 12" min. length reinforcement plates.
2. All hollow metal doors are to be properly reinforced as shown.
3. If dead stop is required add 5/8" to "A" dimension.
4. A, B and C dimensions are measured from center line of pivot, not edge of door.
5. Reversible, non-handed.
6. All dimensions are given in inches.

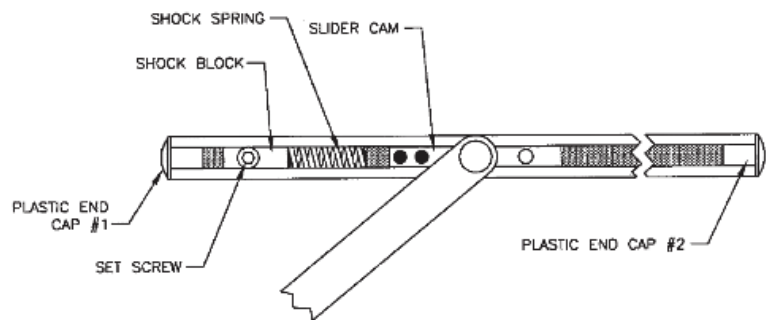
CON770 Series Installation Instructions

(Medium Duty, Concealed Mount - MULTI-FUNCTION)

CON770 Series Dimensions							
Hinge	Model	Door opening	A	B	C	E	F
$1\frac{3}{4}$ ~ $2\frac{1}{4}$ Butts & $\frac{3}{4}$ Offset Pivot	CON772H	18~24	$1\frac{3}{16}$	$3\frac{11}{16}$	0	$15\frac{5}{16}$	$15\frac{7}{8}$
	CON773H	$24\frac{1}{16}$ ~30	4	$4\frac{3}{8}$	$2\frac{9}{16}$	$16\frac{9}{16}$	$17\frac{1}{16}$
	CON774H	$30\frac{1}{16}$ ~36	$6\frac{3}{4}$	$5\frac{9}{16}$	$4\frac{11}{16}$	19	$18\frac{13}{16}$
	CON775H	$36\frac{1}{16}$ ~42	$9\frac{7}{8}$	$7\frac{1}{4}$	$6\frac{3}{8}$	23	$21\frac{1}{4}$
	CON776H	$42\frac{1}{16}$ ~48	$13\frac{13}{16}$	$8\frac{1}{2}$	$7\frac{5}{8}$	$27\frac{1}{2}$	$23\frac{1}{16}$
Center Hung	CON772H	---	---	---	---	---	---
	CON773H	27~32	$5\frac{7}{16}$	$6\frac{1}{8}$	$5\frac{1}{4}$	$15\frac{5}{8}$	$17\frac{1}{16}$
	CON774H	$32\frac{1}{16}$ ~ $38\frac{1}{2}$	$7\frac{3}{16}$	6	$5\frac{9}{32}$	19	$18\frac{13}{16}$
	CON775H	$38\frac{9}{16}$ ~45	$10\frac{5}{16}$	$7\frac{11}{16}$	$6\frac{13}{16}$	23	$21\frac{1}{4}$
	CON776H	$45\frac{1}{16}$ ~48	$14\frac{1}{4}$	$8\frac{15}{16}$	$8\frac{1}{16}$	$27\frac{1}{2}$	$23\frac{1}{16}$

Adjust the degree of stop:

1. Use a 3/16 hexagon key wrench, loosen the set screw in the shock block.
2. Open door to desired degree of opening.
3. Slide shock block and spring until the spring touches slider cam.
4. Tighten set screw.
5. Verify door opening position and re-adjust as needed.

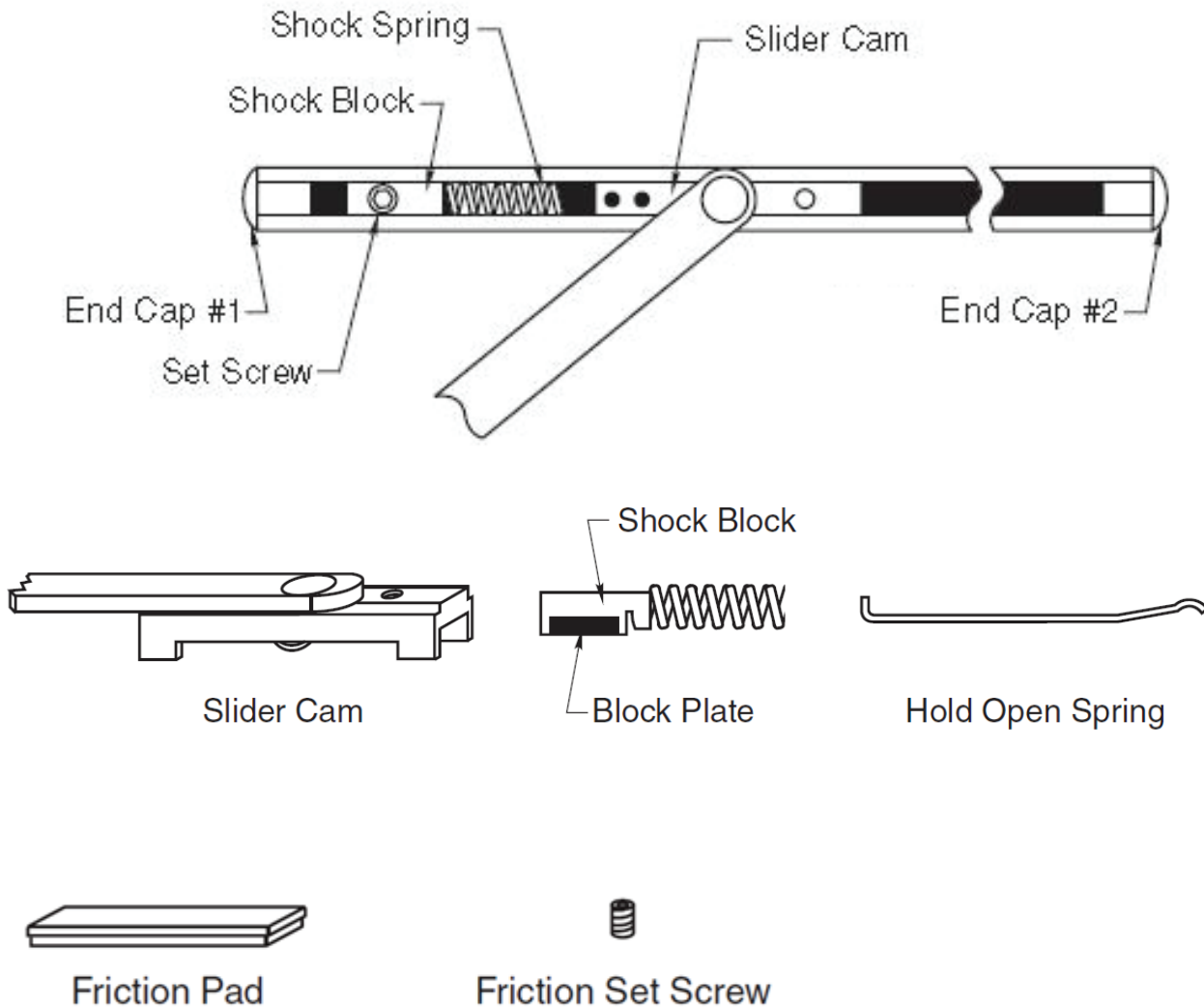




Installation Instructions

MEDIUM DUTY - MULTI-FUNCTION

After installing products on door and frame, select the function desired and proceed.
All units are shipped as stops.

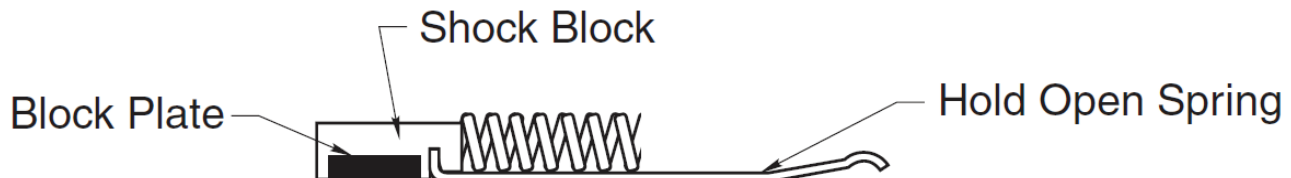


TO SELECT DEGREE OF STOP

1. With a 3/16" hex key wrench, loosen the set screw in the shock block.
2. Open door to desired degree of opening.
3. Slide shock block and spring until the spring touches slider cam.
4. Tighten set screw.
5. Verify door opening position and re-adjust, as needed.

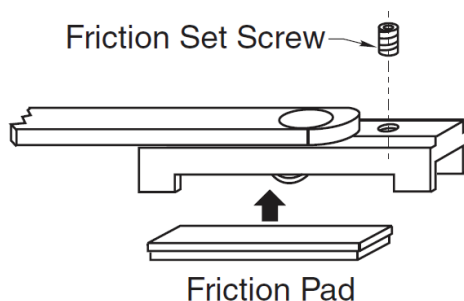
WARNING: THESE FUNCTIONS CANNOT BE USED ON LABELED OPENINGS!

To Convert to Hold Open:



1. Follow instructions for **select degree of stop.**
2. With pencil, mark the position of the shock block, on the channel.
3. Remove the end cap #1 at the spring end of the channel.
4. With a 3/16" hex key wrench, loosen the set screw in shock block.
5. Remove shock block and block plate from channel.
6. Insert the hold open spring into the slot of the shock block.
7. Replace the shock block, block plate and hold open spring into channel.
8. Be sure the shock plate assembly is positioned as shown.
9. Replace the end cap #1.
10. Slide shock block until it lines up with mark you made on the channel.
11. Tighten set screw of shock block.

To Convert to Friction Stay:



1. Follow instructions for **select degree of stop.**
2. Remove end cap #2, farthest away from the spring.
3. Slide arm and slider cam out of the channel.
4. Turn slider cam over.
5. Place friction pad in recess in slider cam. (Metal side of friction pad closest to slider cam).
6. Turn slider cam and arm over.
7. Insert the slider cam and friction pad in the channel. (End with 2 rivets are toward the spring)
8. Replace the plastic end cap.
9. Adjust the set screw to the desired tension.