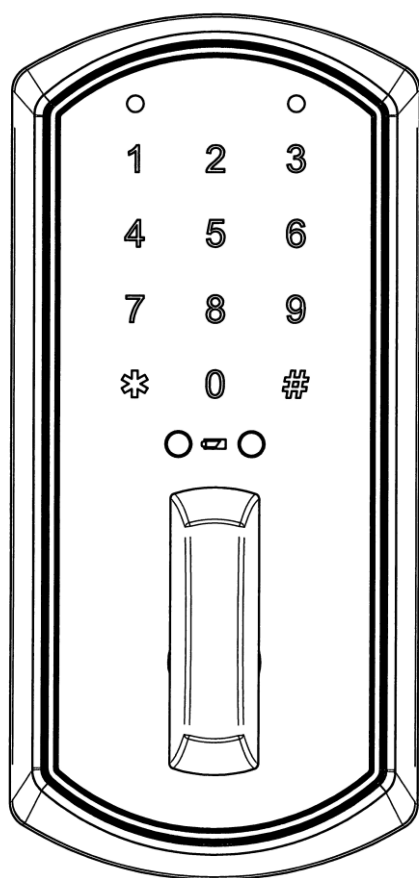




# JE-40C

## Stand-Alone Clutch Deadbolt

### Installation and Programming Instructions



Take the time to read through this guide to familiarize yourself with the features and operation of the lock, and its quick and easy programming procedures.

***Please keep this PROGRAMMING INSTRUCTIONS for future reference***

- Note: Improper installations may result in damage to the lock and void the factory warranty.

# INSTALLATION INSTRUCTIONS

## IMPORTANT NOTES

### DO NOT use a power drill for installation

- Install and test lock with door open to avoid being locked out.
- Please use four alkaline batteries for the best performance.
- Read the precautions and instructions in this manual before installing and using this lock. Save this manual for future reference.

## Prepare for installation

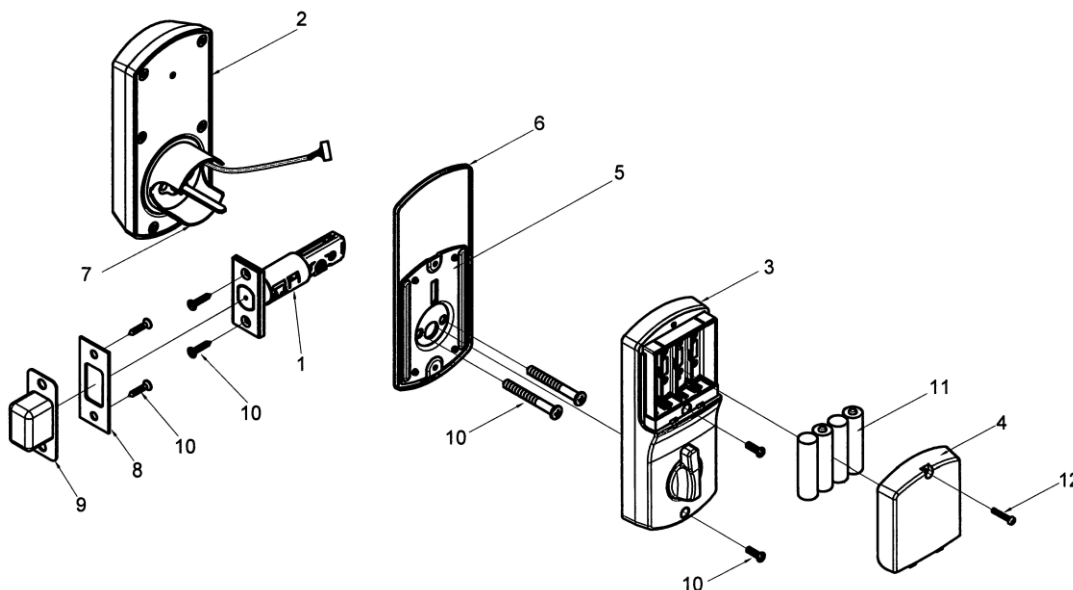
### Tools Needed

- Phillips screwdriver
- Tape Measure
- Pencil

### Optional

- Flathead screwdriver
- Wood Block
- Hammer

## Pre-installation – Hardware



| Part | Description                  | Quantity |
|------|------------------------------|----------|
| 1    | Latch                        | 1        |
| 2    | Exterior Escutcheon Assembly | 1        |
| 3    | Interior Escutcheon Assembly | 1        |
| 4    | Battery Cover                | 1        |
| 5    | Mounting Plate               | 1        |
| 6    | Interior Gasket              | 1        |
| 7    | Anti-pry shield              | 1        |

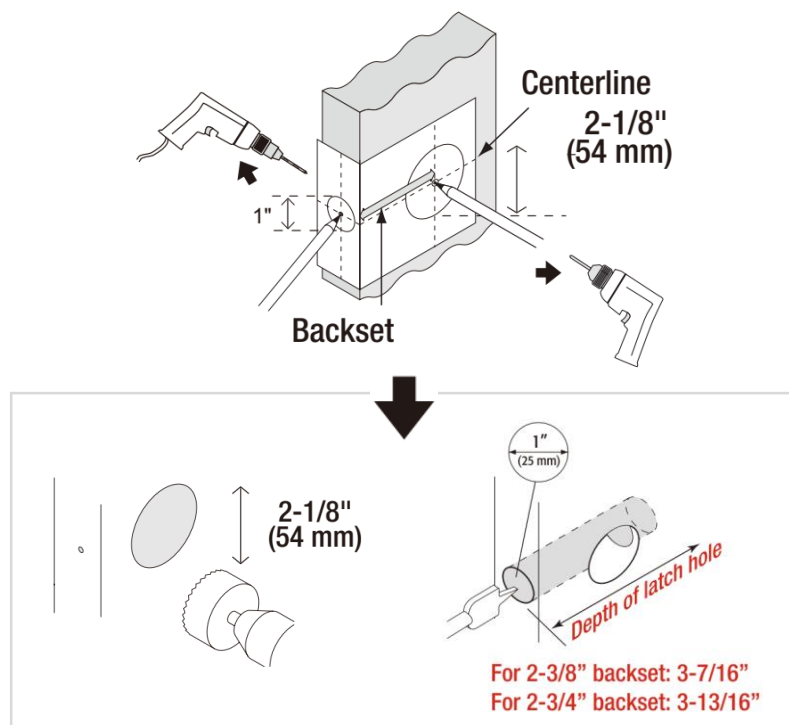
| Part | Description   | Quantity |
|------|---|----------|
| 8    | Strike  | 1        |
| 9    | Strike box  | 1        |
| 10   | Screw Pack<br>• (4) 8-32x3/4" (19mm) Combination Screw<br>• (2) 1/4"x28x2" (50.8mm) Mounting Bolt<br>• (2) M4.0xP0.7-15/32" (12mm) Interior Escutcheon Bolt | 1        |
| 11   | AA Alkaline Batteries   | 4        |
| 12   | Battery Cover Screw   | 1        |

## Pre-installation (continued) – Door Preparation

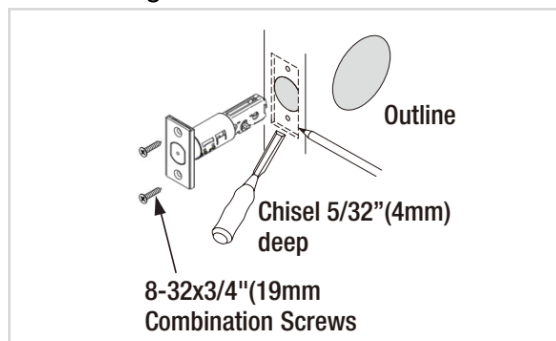
### 1. TEMPLATE and use to mark the door, drill holes, and chisel out the mortise.

#### NOTE:

- If your door is pre-drilled, check the hole sizes to make sure they are the proper size. If they are the proper size, skip to the Installation section.
- Drill from both sides of the door to prevent wood splitting.



- Installing the latch



### 2. Prepare the door jamb

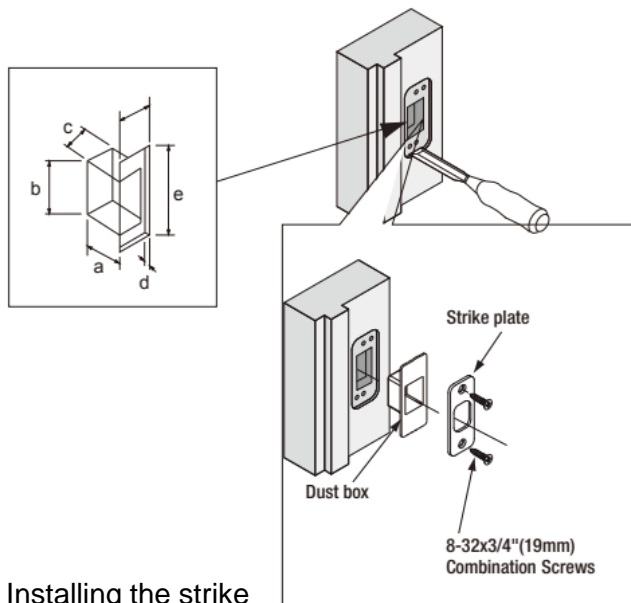
use the strike plate as a template to drill the latch and screw holes and chisel out the mortise. The strike plate must fit flush with the surface of the door jamb.

#### Door jamb hole dimension

- 1-3/16" (30mm)
- 1-9/64" (29mm)
- 7/8" (22mm)

#### Strike dimension

- 5/32" (4mm)
- 2-1/4" (57mm)
- 1" (25mm)

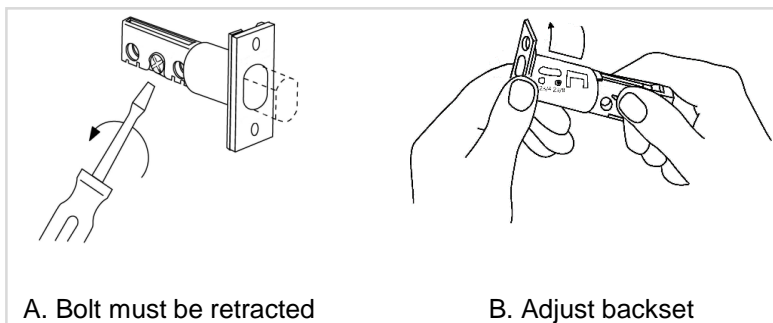


- Installing the strike

### 3. Adjust bolt length, if necessary

#### NOTE

- If the backset of your door is 2-3/4" (70mm), you do not need to do anything. Bolt ships with factory preset 2-3/4" (70mm) backset.
- If the backset of your door is 2-3/8" (60mm), you need to adjust your bolt.
  - Bolt must be in a retracted (unlocked) position. (If necessary, use screwdriver to turn cam and retract bolt.)
  - Press on the bolt with thumb. Rotate faceplate and push down to move housing to next position.



A. Bolt must be retracted

B. Adjust backset

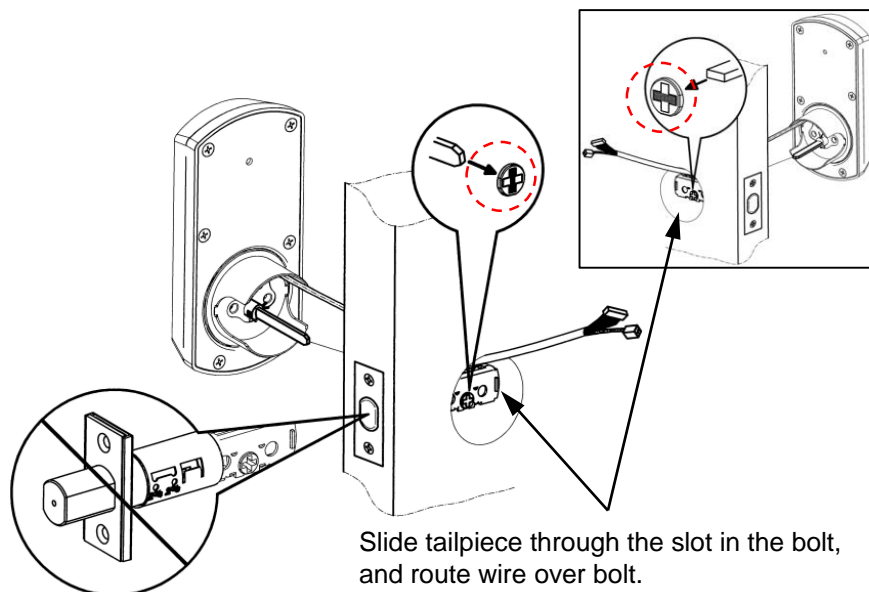
# Installation

## 1. INSTALLING THE LOCK ASSEMBLIES.

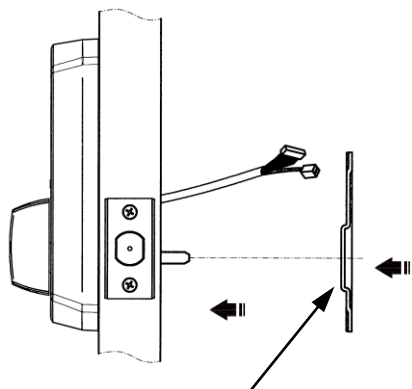
A. Install the outside deadbolt assembly on the outside of the door.

★ Slide tailpiece through the slot in the bolt (make sure the direction of the tailpiece is correct).

The latch bolt should be in retracted position

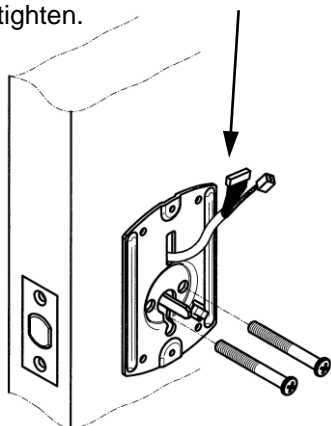


B. Install the outside lock assemblies



The bulged part of the mounting plate must face towards the door.

Slide the cable through the notch in mounting plate. Insert screws and tighten. Do not overtighten.



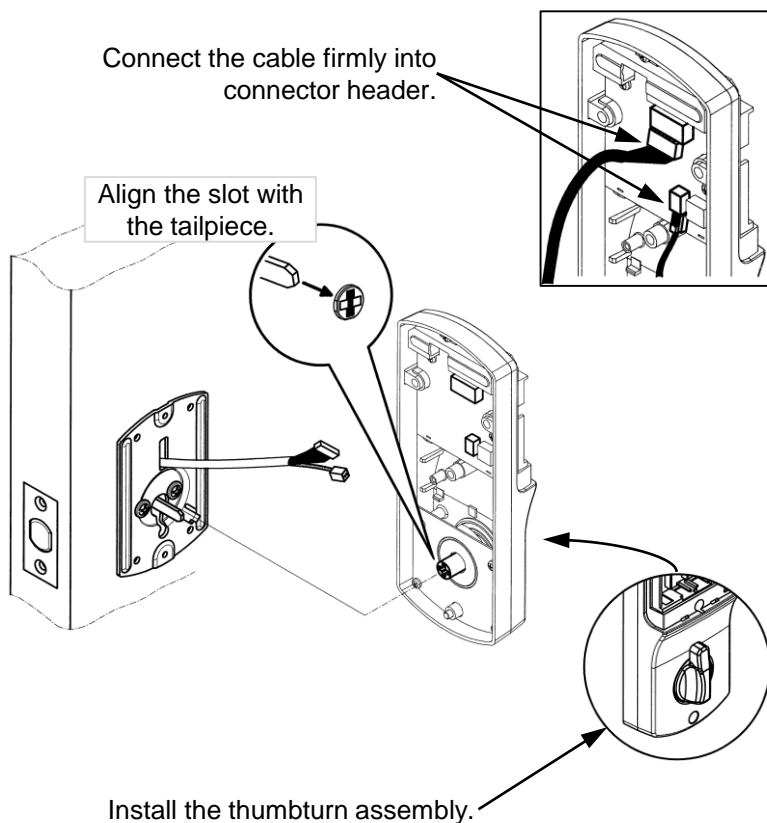
C. Install the Inside assemblies.

### NOTE

- Connect the cable to the inside assembly.
- Make sure thumbturn is vertical.

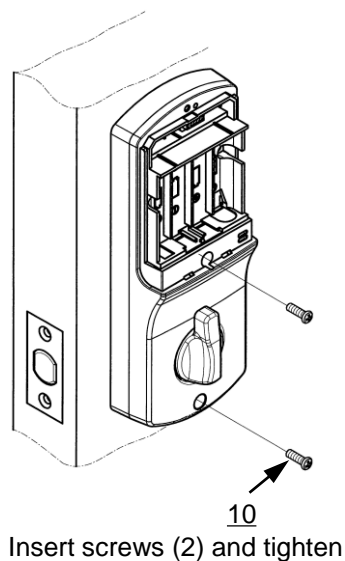
Connect the cable firmly into connector header.

Align the slot with the tailpiece.



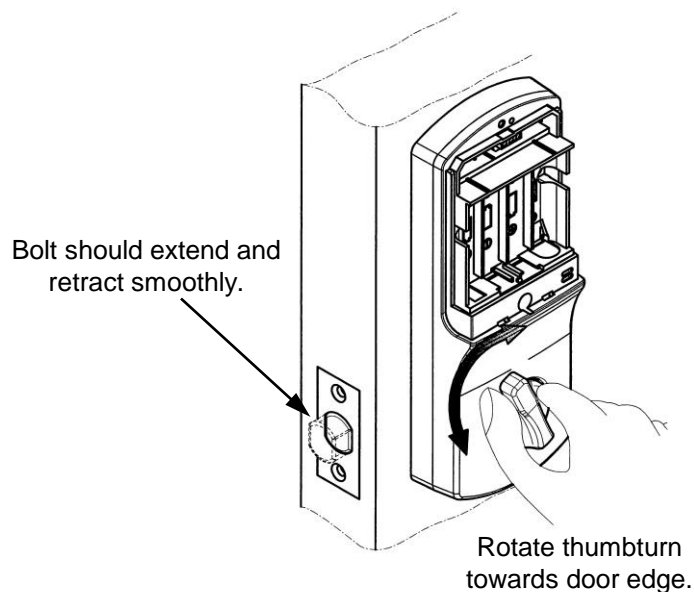
## D. Install the inside assemblies

Secure the inside assembly with two screws.



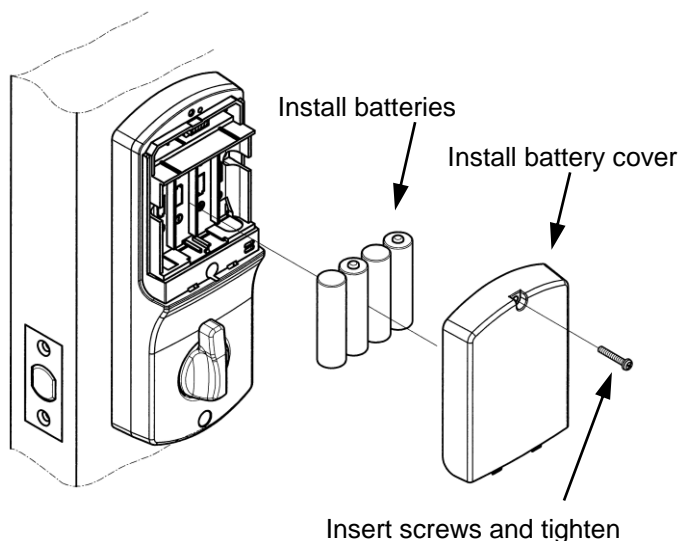
## 2. Test the lock.

Extend and then retract the bolt using the inside bolt throw.



## 3. Install the batteries and Cover.

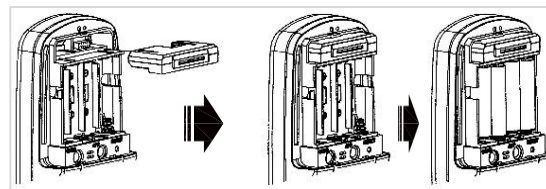
Please use four alkaline batteries for better performance.



## 4. Installation Option

Adding the Key Module to your lock(optional)

★ **IMPORTANT:** The batteries must be removed prior to removing and/or inserting the Key Module:



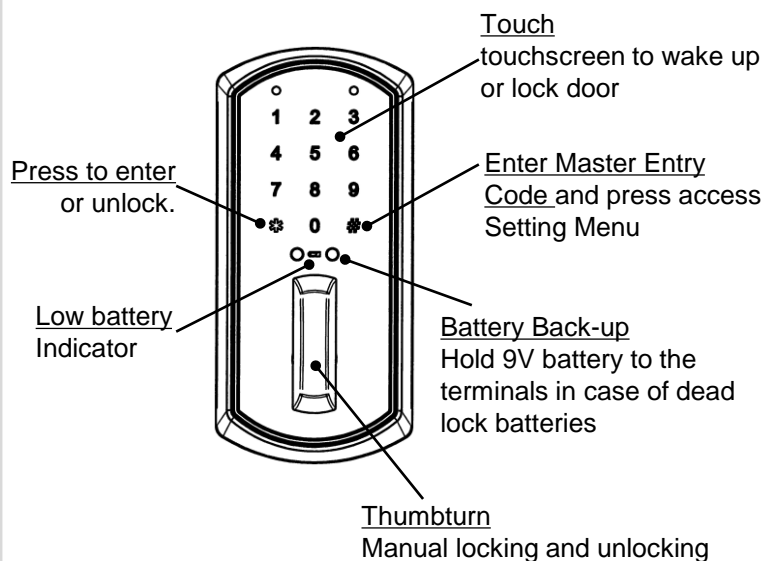
1. Install the Key Module into the slot above the battery compartment
2. Open the app on your smartphone.
3. Follow the app programming instructions for enrolling a new device.

# PROGRAMMING GUIDE

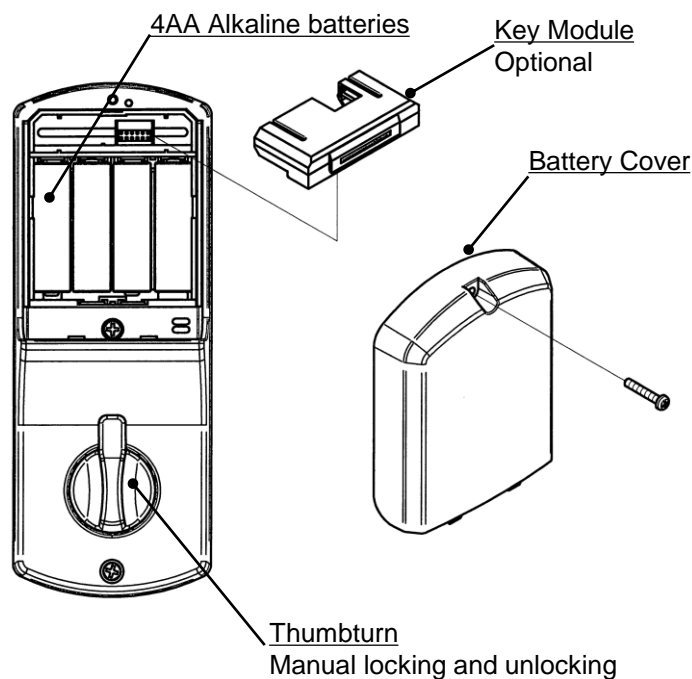
Take the time to read through this guide to familiarize yourself with the features and operation of the lock, and its quick and easy programming procedures.

## Programming Features

### Touchscreen Escutcheon



### Inside Escutcheon



## Overview

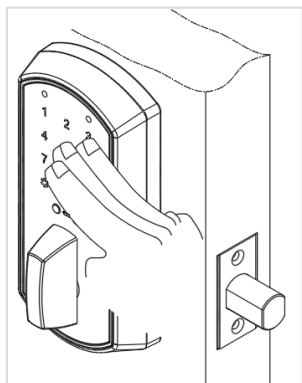
Stand-Alone Access Control System is a series of State-of-the-Art Microprocessor-Based programmable Touchscreen-Entry Security Locks.

- User Access Methods
  - Touchscreen Entered User PIN Code
  - RF Card
  - Mobile App(Optional)
- User Features
  - 500 User
  - User code length from 4~6 digits.

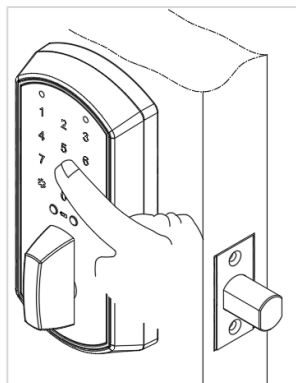
## Operation of lock

### 1. Opening the door with a Pin Code.

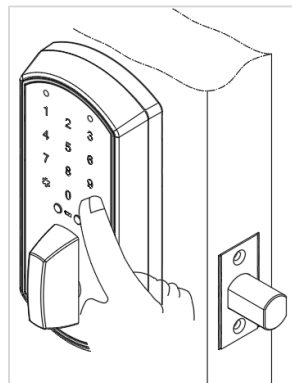
Factory Default : 123456 [ 6digit]



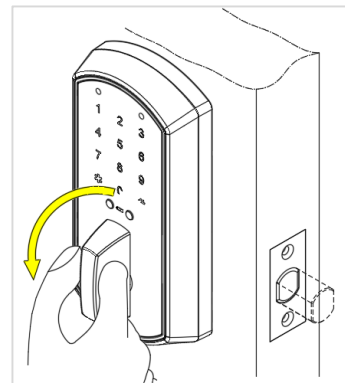
Touch touchscreen with back of hand or fingers to activate.



Enter a registered PIN Code.

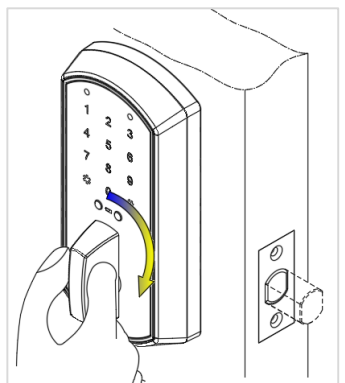
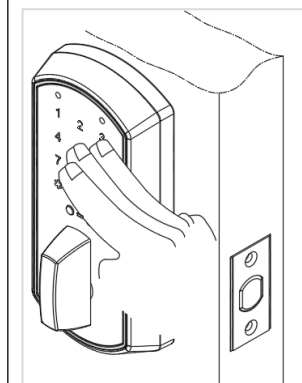


Press the [\*] button to confirm the selection.

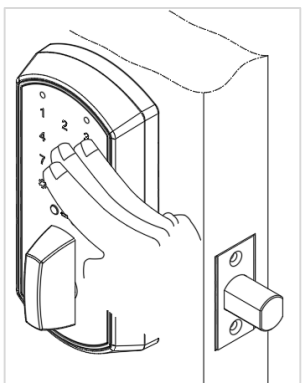


Extend the bolt using the inside bolt throw.

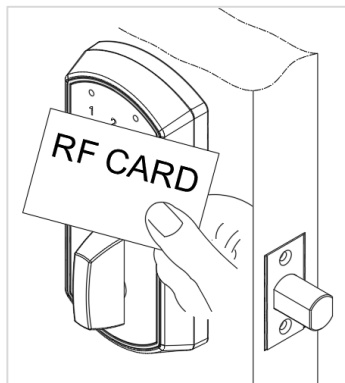
#### Extend the bolt



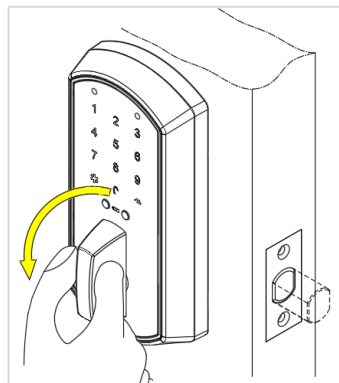
### 2. Opening the door with a RF Card.



Touch touchscreen with back of the hand or fingers to activate.



Place a registered RF Card in front of the touchscreen like above figure.



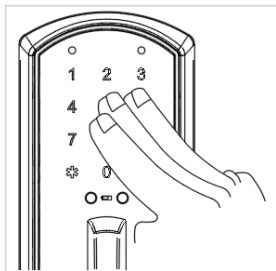
Extend the bolt using the inside bolt throw.

# Programming

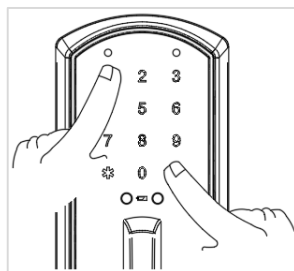
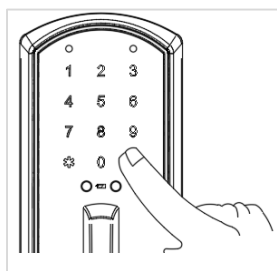
## 1. Change Default Master Entry Code

The master entry code is used to change the lock settings.

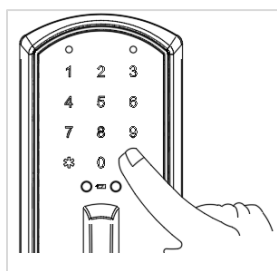
A security best practice is to set your master entry code with 6 digits and create a separate code that is used daily to lock and unlock the door. [ Factory with Master PIN Code [123456]. ]



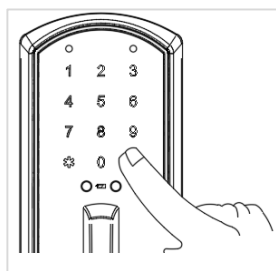
- ① Enter Master Entry Code
- ② Press [ # ]



- ① Press [ 1 ]
- ② Press [ # ]



- ① Enter 6 digit new Master Entry Code
- ② Press [ # ]



- ① Enter 6 digit new Master Entry Code
- ② Press [ # ]



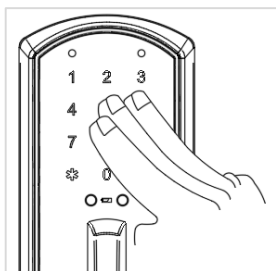
To end programming



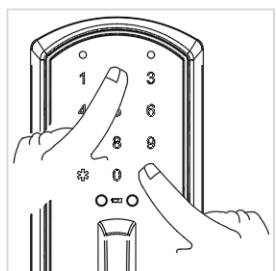
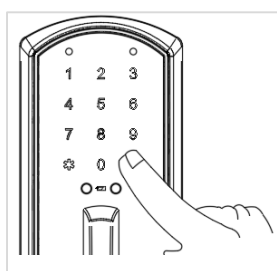
- ① Press [ \* ]

## 2. Creating Entry User Codes

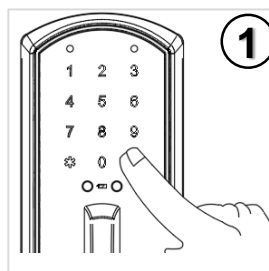
Master entry code must be changed first. [ Max Entry User Code = 500 ]



- ① Enter Master Entry Code
- ② Press [ # ]

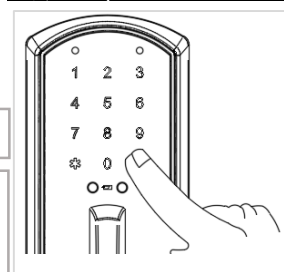


- ① Press [ 2 ]
- ② Press [ # ]

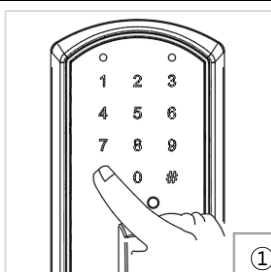


- ① Enter 4~6 digit Entry User Code
- ② Press [ # ]

Adding more  
★Entry User Codes:



To end programming

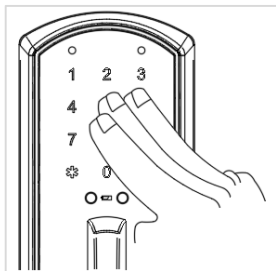


- ① Press [ \* ]

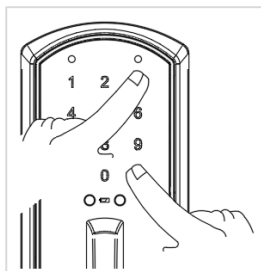
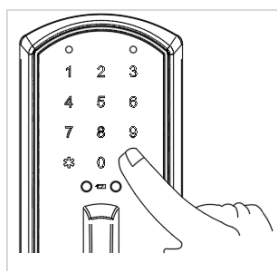


### 3. Deleting Entry User Codes

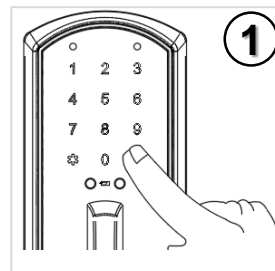
To delete one Entry Code, you must enter the Entry Code you wish to delete. Enter 4-6 digit entry code.



- ① Enter Master Entry Code
- ② Press [ # ]



- ① Press [ 3 ]
- ② Press [ # ]



- ① Enter User Code to be deleted
- ② Press [ # ]

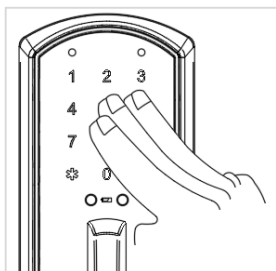
**Deleting more**  
★ Deleting one Entry User Codes:

① Press [ # ]  
 ① Deleting one Entry User Code  
 ② Press [ # ]

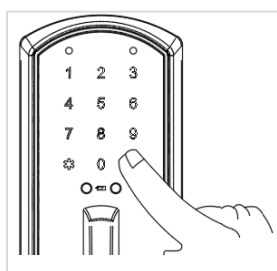
**To end programming**

① Press [ \* ]

### 4. Customizing Lock Using Settings Menu



- ① Enter Master Entry Code
- ② Press [ # ]



★ Enter digit corresponding to the function to be performed followed by the # button.

#### 4 One-Time User Code

4 # → Enter 4~6 digit Entry User Code → # → # → \*

#### 5 Setting Up/Releasing Passage Mode

5 # → 1 Enable \*  
3 Disable \*



Enter Master Entry Code

# → 5 \*

#### 7 Setting Up/Releasing Lockout Mode

7 # → 1 Enable \*  
3 Disable \*

#### 0 Setting Up/Releasing Lockout Mode

0 # → 1 Volume # → 1 ~ 4 \*  
3 Re-lock Time # → 1 sec ~ 9 sec \*

★ Sound Volume: minimum ~ maximum mute

★ Here is an example of how to set Auto Lock to 9 seconds :

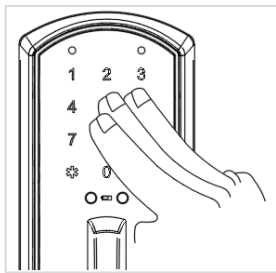


Enter Master Entry Code

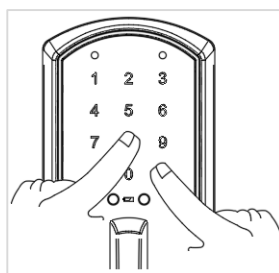
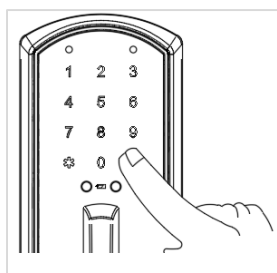
# 0 # 3 Re-lock Time # 5 \*

## 5. Creating RF Cards

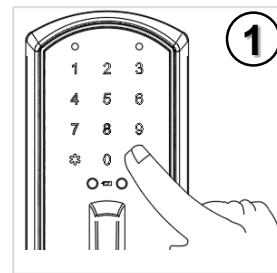
Master entry code must be changed first. [Max Entry User Code = 500]



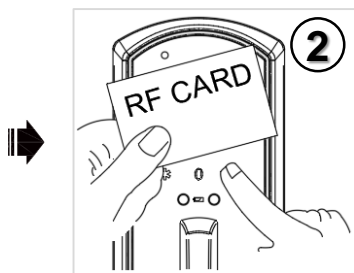
- ① Enter Master Entry Code
- ② Press [ # ]



- ① Press [ 8 ]
- ② Press [ # ]



- ① Enter the Card Register No. (0~499)
- ② Press [ # ]



- ① Touch RF Card
- ② Press [ # ]

**Adding more**  
★ Entry User RF Card:

- ① Press [ # ]

- ① Enter the Card Register No.(0~499)
- ② Press [ # ]

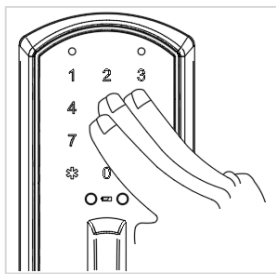
- ② ① Touch RF Card
- ② Press [ # ]

**To end programming**

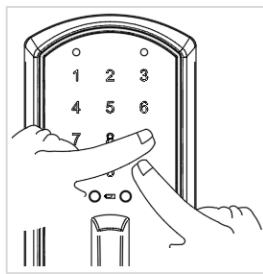
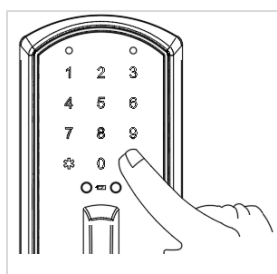
- ① Press [ \* ]

## 6. Deleting RF Cards

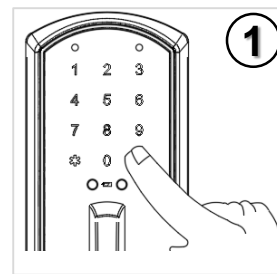
Master entry code must be changed first.



- ① Enter Master Entry Code
- ② Press [ # ]



- ① Press [ 9 ]
- ② Press [ # ]



- ① Enter the Card Register No. (0~499)
- ② Press [ # ]

**Deleting more**  
★ Deleting one Entry User RF Codes:

- ① Press [ # ]

- ① Enter the Card Register No.(0~499)
- ② Press [ # ]


**To end programming**

- ① Press [ \* ]

## 7. Setting Definitions

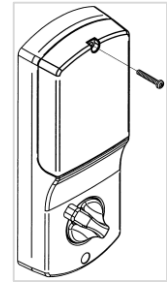
| Settings               | Default Setting     | Definition   |
|------------------------|---------------------|--|
| Master Entry Code      | 123456<br>[6 digit] | The Master Entry Code is used for programming and for feature settings. The Master code will also operate (unlock/lock) the lock.  |
| User Code              | 4~6 digits          | The User PIN code is used for operating the lock.  |
| One-Time User Code     | 4~6 digits          | This PIN Code can only be used once and the PIN information is deleted automatically after use. User can program up to 2 different One-Time User PIN Codes.  |
| Lockout Mode           | Disabled            | This feature is enabled by the Master Entry Code. When enabled, it restricts all Entry Code access (except Master).<br>When attempting to enter a code the lock is in Lockout Mode, the RED will appear on the screen. |
| Auto Re-lock           | 5 Seconds           | When enabled, After successful code entry and the unit unlocks, it will automatically re-lock after 1~9 seconds.   |
| Low Battery            | Red LED             | When battery power is low, the low battery icon will begin blinking. If battery power is completely lost, the key cylinder can be used.  |
| Beep Sound             | 2 levels            | The Beep Sound can be turned on/off if desired.  |
| Shutdown Time          | 60 Seconds          | The Lock will shutdown (flashing RED) for sixty(60) seconds and will not allow operation after the wrong code entry limit (5 attempts) has been met.   |
| Wrong Code Entry Limit | 5 Times             | After five (5) unsuccessful attempts at entering a valid Entry Code, the lock will shut down and not allow operation for sixty (60) seconds.   |

## 8. Resetting Lock to Factory Default

1. Remove the battery cover and batteries.
2. After 10 seconds reinsert the batteries.
3.  Touch the touchscreen with the back of hand or fingers to activate within 5 seconds.
4. Enter the [#] button 5 times and factory defaults Master Code [123456] [#] and [30] [#] and press the [1] [\*] button.

**#####** ➡ **123456** **#** ➡ **30** **#** ➡ **1** **\***

5. A little later, the number pad is turned off and reset is complete.



### Note:

All registered Master and User PIN Code data, etc., will be deleted, and the lock will reset to the factory default.

## 9. Battery Replacement

When battery power is low, the low battery icon will begin blinking with beep sound. Always replace weak batteries as soon as possible. The locks use four (4) AA-size 1.5 volt alkaline batteries.

## 10. Troubleshooting

| Symptom  | Suggested Action  |
|--|---|
| Lock does not respond – door is open and accessible.   | <ul style="list-style-type: none"> <li>Keypad becomes active when touch touchscreen is pressed. Verify contact with the touchscreen.</li> <li>If keypad numbers are visible, check they respond when pressed.</li> <li>Check batteries are installed and oriented correctly (polarity) in battery case.</li> <li>Replace batteries* if batteries are dead.</li> <li>Check keypad cable is fully connected and not pinched.</li> </ul>   |
| Lock does not respond – door is locked and inaccessible.   | <ul style="list-style-type: none"> <li>Batteries may not have enough power. Replace batteries.</li> <li>Apply a 9V battery to the terminals in front of the keypad for backup power option.</li> </ul>  |
| Lock beeps indicating code acceptance, but door will not open  | <ul style="list-style-type: none"> <li>Check for any foreign objects between door and frame.</li> <li>Check that the cable is firmly connected to the inside lock.</li> </ul>   |
| Entry Codes will not register  | <ul style="list-style-type: none"> <li>Entry Codes must consist of 4 to 6 digits.</li> <li>The same Entry Code cannot be used for multiple users.</li> <li>Entry Codes are set by the Master Entry Code, which is set first. Contact the Master user.</li> <li>Entry Codes must be entered within 10 seconds (while keypad is active) or process will have to be restarted.</li> </ul>  |
| Upon entering Entry Code and pressing * key, the lock displays "invalid code" error or lock times out without responding | <ul style="list-style-type: none"> <li>Verify entered code is a valid, previously programmed, 4 to 6 digit code.</li> <li>All Code Lockout is enabled. Only the Master Entry Code can change All Code Lockout. Contact the Master user.</li> </ul>  |
| Lock responds "Low Battery"  | <ul style="list-style-type: none"> <li>This is the alert to replace the batteries. Replace all four (4) batteries* with new AA Alkaline batteries.</li> </ul>   |
| Upon entering Entry Code and pressing the * key, lock responds "Beep 5 time".  | <ul style="list-style-type: none"> <li>The digits entered were incorrect or incomplete. Re-enter the correct code followed by the * key.</li> </ul>   |
| Can't change the Master Entry Code.  | <ul style="list-style-type: none"> <li>There was a delay while entering the new Master PIN Code. The number pad must be illuminated while the new Master PIN Code is being entered. Also, after entering the first digit the next digit must be entered within 10 seconds.</li> <li>If batteries are discharged, try again after replacing the batteries.</li> <li>Refer to the changing the Master PIN Code section in the programming instructions and try changing again.</li> </ul> |