

1. SURFACE OF DOOR WHERE EXIT DEVICE IS TO E APPLIED MUST BE FLUSHED.
2. SEE MASTER SHEET FOR AREAS REQUIRING REINFORCEMENTS.
3. SEE STRIKE TEMPLATE FOR TOP AND BOTTOM STRIKES.
4. WE RECOMMEND THAT ALL TAPPED HOLES BE DRILLED AND TAPPED IN FIELD.
5. TOLERANCE ON ALL DIMENSION +/- 1/64"

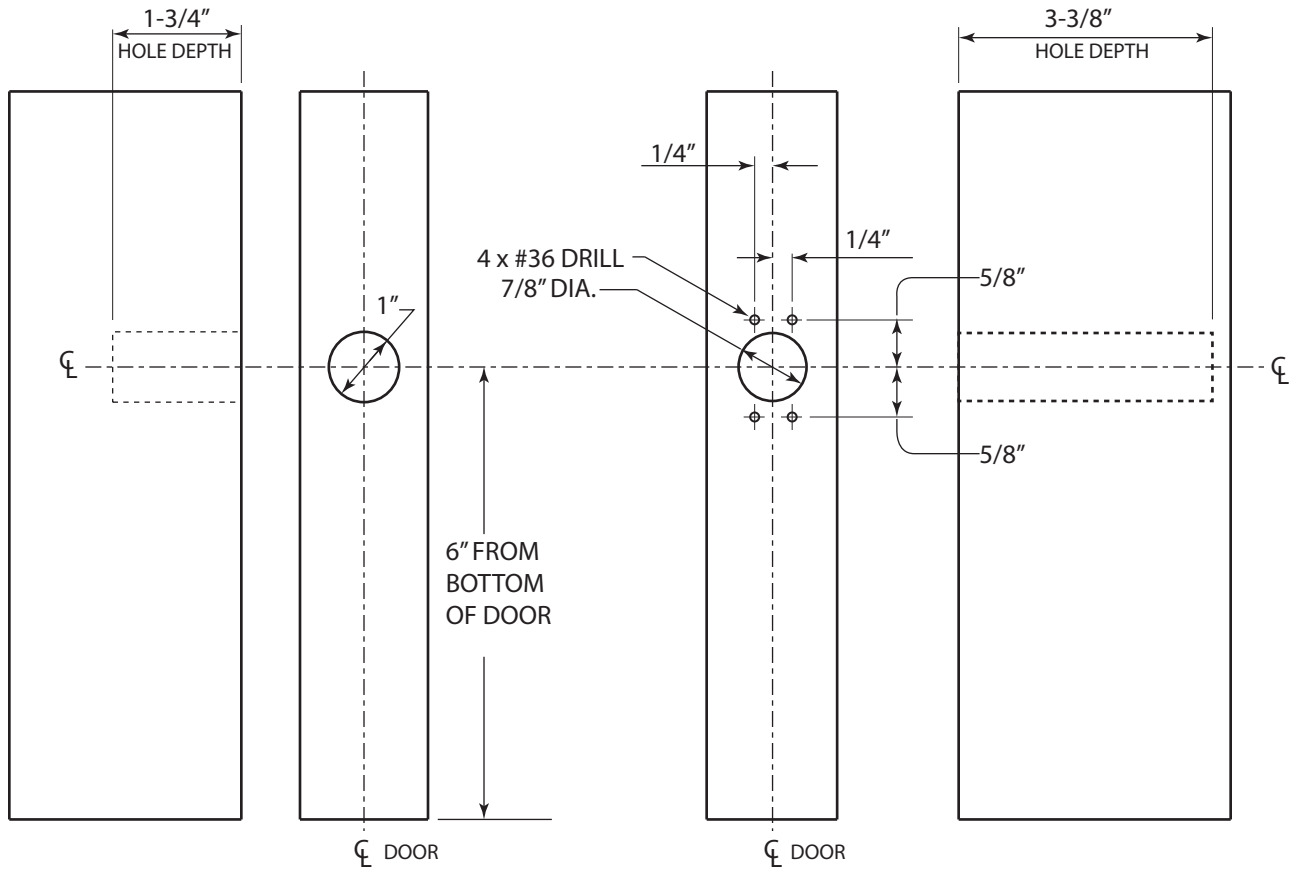
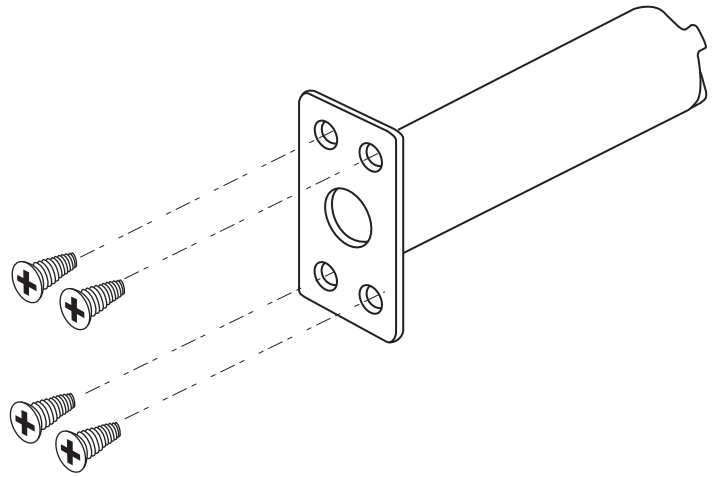
The illustration and technical description in this cut sheet is current as of the date in version date on the right. Cal-Royal Product reserves the right to, and may, on occasions, make changes and/or improvements in designs and dimensions without prior notice.

	6605 Flotilla Street City of Commerce CA 90040 USA Tel:# (323) 888-6601 FAX # (323) 888-6699 WEB SITE: CAL-ROYAL.COM Email: sales@cal-royal.com		ITEM NO.	DESCRIPTION :	NOT TO SCALE	UNIT PRIMARY DIMENSION SHOWN IN INCHES, DIMENSIONS IN ( ) ARE MM	Prepared By: BBT / ADG AED / CVL	DATE 08/28/23	DWG. NO. EDT-4087-08/23-1of2
	LBRF2260SVR	TEMPLATE LAY-OUT FOR 2260 SURFACE VERTICAL ROD	PAGE 1 OF 2	REV					

DESCRIPTION	QTY.
AUXILLIARY FIRE LATCH ASSEMBLY	1
#6 X 3/6" TYPE AB FLAT HEAD SCREW	4
STRIKE HOLE PLUG	1



STRIKE HOLE PLUG



**STRIKE HOLE PLUG  
DOOR LEAF**

**AUXILLIARY FIRE LATCH ASSEMBLY  
DOOR LEAF**



6605 Flotilla St.  
City of Commerce  
CA 90040 USA  
Tel: (323) 888-6601  
FAX: (323) 888-6699  
Website: cal-royal.com  
Email: sales@cal-royal.com

ITEM NO:	DESCRIPTION:	DRWNG:
<b>AUXFL</b>	AUXILLIARY FIRE LATCH ASSEMBLY	EDT-4087-08/23-2of2
ANSI:	UNIT:	VERSION:
	inches [mm]	ver. 1.0 rev. 04/12
	BY:	
	bteves/adg	