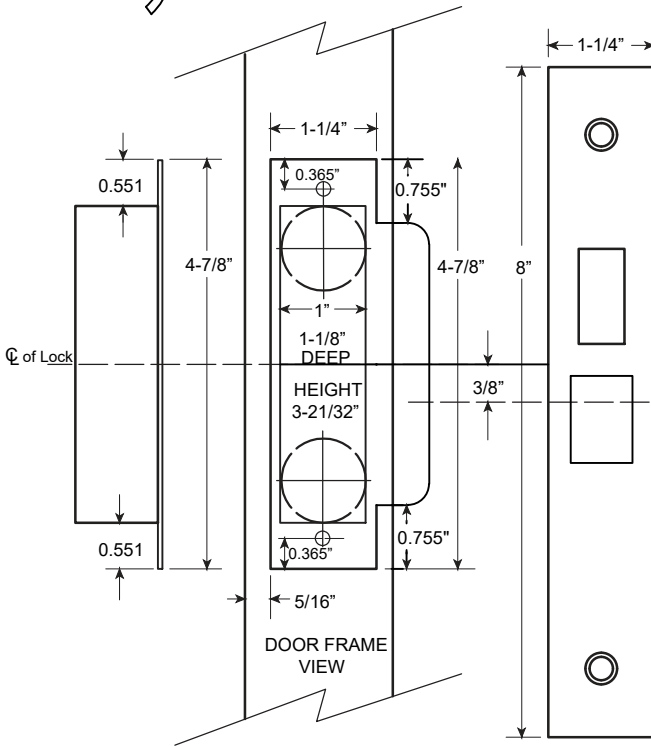
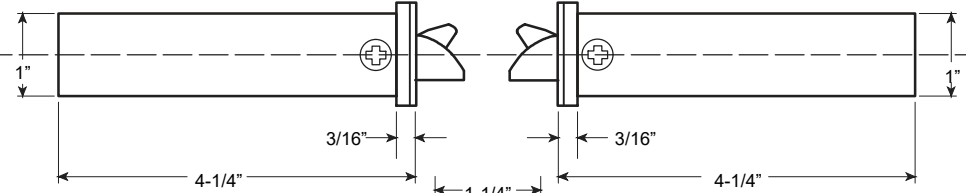


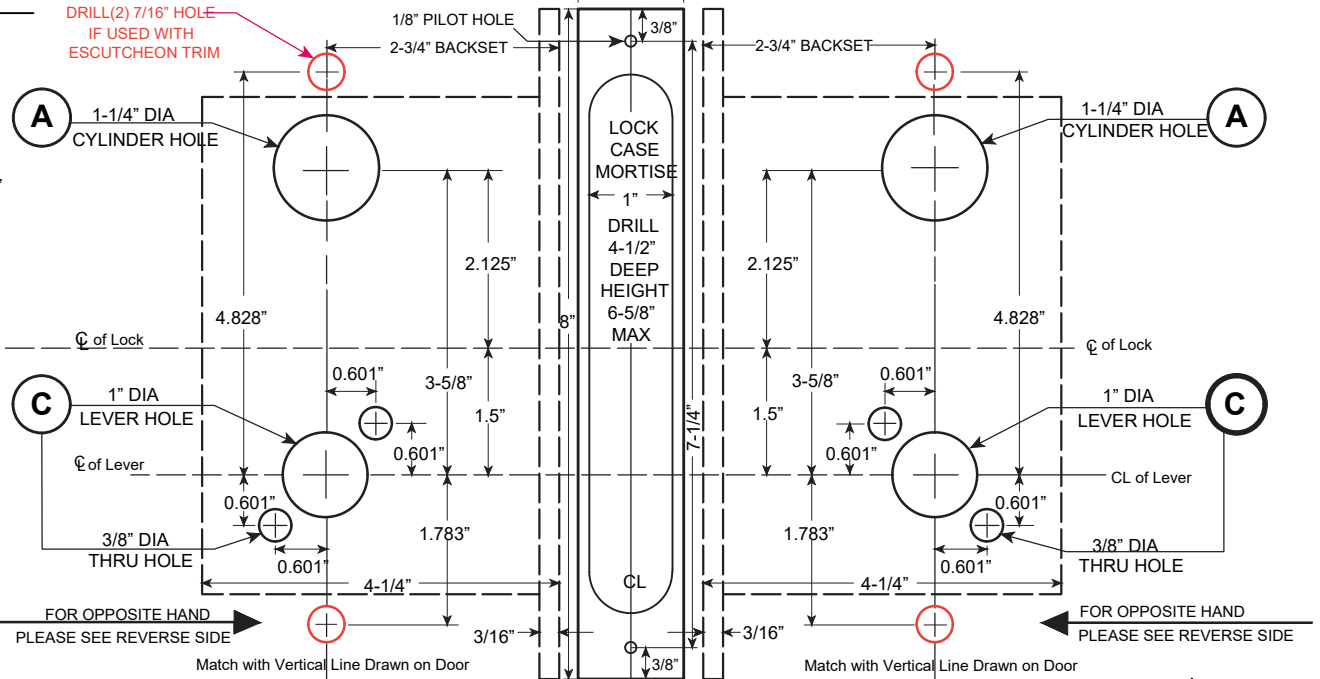
MORTISE LOCK
INSTALLATION TEMPLATE

☉ of Lock (top view)



DOOR FRAME
VIEW

DRILL (2) 7/16" HOLE
IF USED WITH
ESCUTCHEON TRIM



FOR OPPOSITE HAND
PLEASE SEE REVERSE SIDE

FOR OPPOSITE HAND
PLEASE SEE REVERSE SIDE

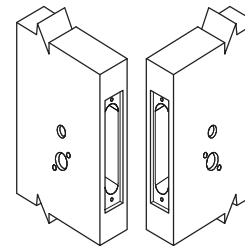
Match with Vertical Line Drawn on Door

Match with Vertical Line Drawn on Door

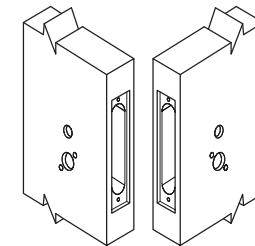
DOOR PREPARATION CHART

ITEM NO.	OUTSIDE			INSIDE		
	CYLINDER HOLE (A)	THUMBTURN HOLE (B)	LEVER HOLE (C)	CYLINDER HOLE (A)	THUMBTURN HOLE (B)	LEVER HOLE (C)
NM8465	●		●			●

● Indicates positions that needs to be drilled.



OUTSIDE INSIDE
LEFT HANDED DOORS



INSIDE OUTSIDE
RIGHT HANDED DOORS



The illustration and technical description in this cut sheet is current as of the date in version date on the right. Cal-Royal Product reserves the right to, and may, on occasions, make changes and/or improvements in designs and dimensions without prior notice.



6605 Flotilla Street
City of Commerce
CA 90040 USA
Tel.# (323) 888-6601
FAX # (323) 888-6699
WEB SITE:
CAL-ROYAL.COM
Email: sales@cal-royal.com

ITEM NO.	DESCRIPTION :
NM8465	Mortise Lockset (Closet / Storeroom)

NOT TO SCALE
PAGE 1 OF 1

UNIT
PRIMARY DIMENSION SHOWN IN INCHES

Prepared By:
BBT / ADG / CVL

DATE
09/05/2024

DWG. NO.
LST-2056-09/24-1of1
Ver.: 1.1 rev.09/24