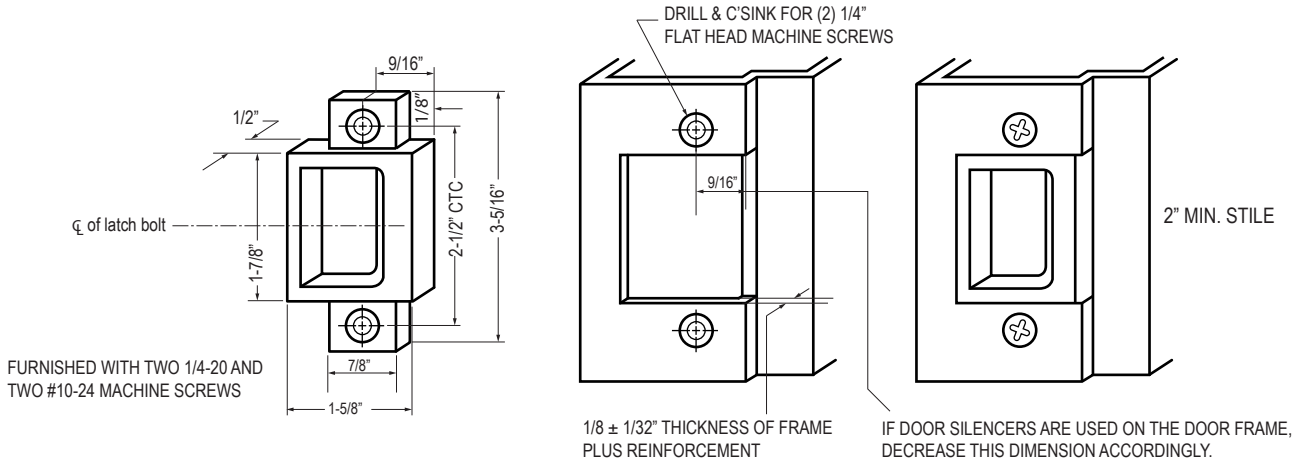


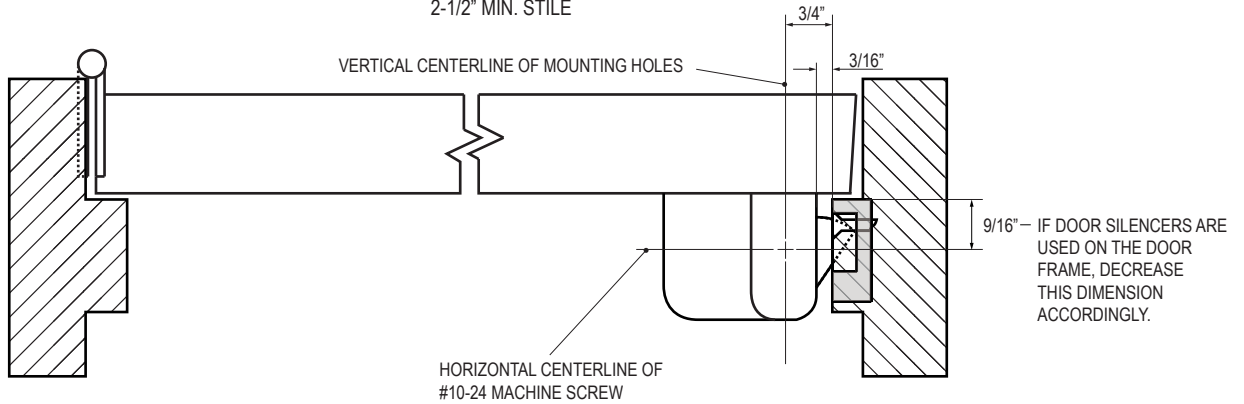
# 246 UNIVERSAL STRIKE

## INTEGRAL STOP APPLICATION



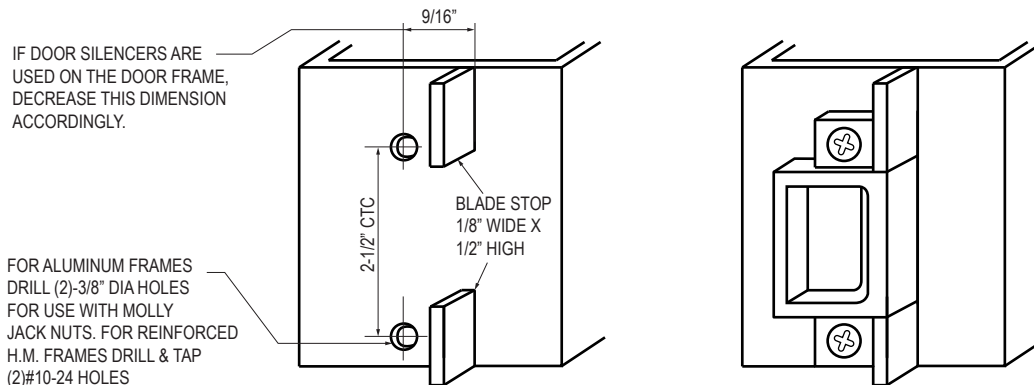
## SINGLE DOOR

2-1/2" MIN. STILE



## BLADE STOP APPLICATION

1-7/8" MIN. STILE



**NOTES:** FRACTIONAL TOLERANCE ± 1/64"

SEE METAL DOOR TEMPLATES TO MOUNT EXIT DEVICE.