

IF LOCK STILE IS 4-1/2" WIDE OR
WIDER DIM IS 2-3/4" IF LOCK STILE IS
UNDER 4-1/2" DIM IS 1/2 OF STILE

2 3/4"

THIS DIMENSION WILL VARY WITH
STOP HEIGHT AND DOOR
CLEARANCE. (SEE ILLUSTRATION)

2 1/2"

1 3/8"

INSIDE FACE OF
DOOR

APPROX
EQUAL

1 5/16"

3/4"

APPROX
EQUAL

CL OF THE PUSH RAIL / KNOB (IF REQUIRED)

3/4"

IF LEVER HANDLE TRIM IS USED A
2-1/8" DIA. THRU HOLE IS REQUIRED

3 1/2"

1 3/4"

3/8"

B. 41" FROM FINISH FLOOR

C. (40-5/16" WHEN USING
ANSI 161 CUT OUT)

18" APPROX

3/8"

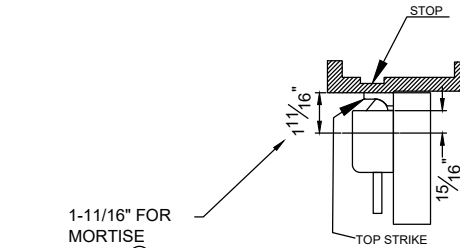
1 5/16"

10-24 TAPPED HOLES

2 1/4"

1/4"

1/8"



1-11/16" FOR
MORTISE
STRIKE (SEE,
NOTE # 3)

STOP

TOP STRIKE

DOGGING KIT
FOR NON
FIRE RATED
(ONLY)

VERTICAL CENTER LINE

HORIZONTAL CENTER LINE

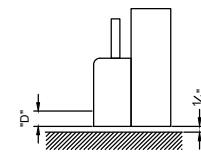
9/16"

1 3/8"

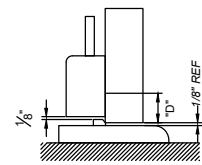
2 1/4"

1 15/16"

5/8"



IF FLAT STRIKES ARE
USED DIM "D" IS 15/16"



IF THRESHOLD
STRIKES ARE USED
DIM "D" IS 1 3/16"

1 5/8"

1/8"

1 5/8"

1/8"

2 1/8"

4"

1. SURFACE OF DOOR WHERE EXIT DEVICE IS TO BE APPLIED MUST BE FLUSHED
2. SEE MASTER SHEET FOR AREAS REQUIRING REINFORCEMENTS
3. SEE STRIKE TEMPLATE FOR TOP AND BOTTOM STRIKES
4. WE RECOMMEND THAT ALL TAPPED HOLES BE DRILLED AND TAPPED IN FIELD
5. TOLERANCE ON ALL DIMENSIONS ± 1/64"

The illustration and technical description in this cut sheet is current as of the date in version date on the right. Cal-Royal Product reserves the right to, and may, on occasions, make changes and/or improvements in designs and dimensions without prior notice.

	6605 Flotilla Street City of Commerce CA 90040 USA Tel: # (323) 888-6601 FAX: # (323) 888-6699 WEB SITE: CAL-ROYAL.COM Email: sales@cal-royal.com		ITEM NO.	DESCRIPTION :	NOT TO SCALE	UNIT	Prepared By:	DATE	DWG. NO.
	5000V / F5000V	TEMPLATE FOR SURFACE VERTICAL ROD EXIT DEVICE	PAGE 1 OF 1	PRIMARY DIMENSION SHOWN IN INCHES. DIMENSIONS IN () ARE MM	BBT / ADG AED / CVL	11/08/2023	EDT-4114-11/23-1of1		
								REV	