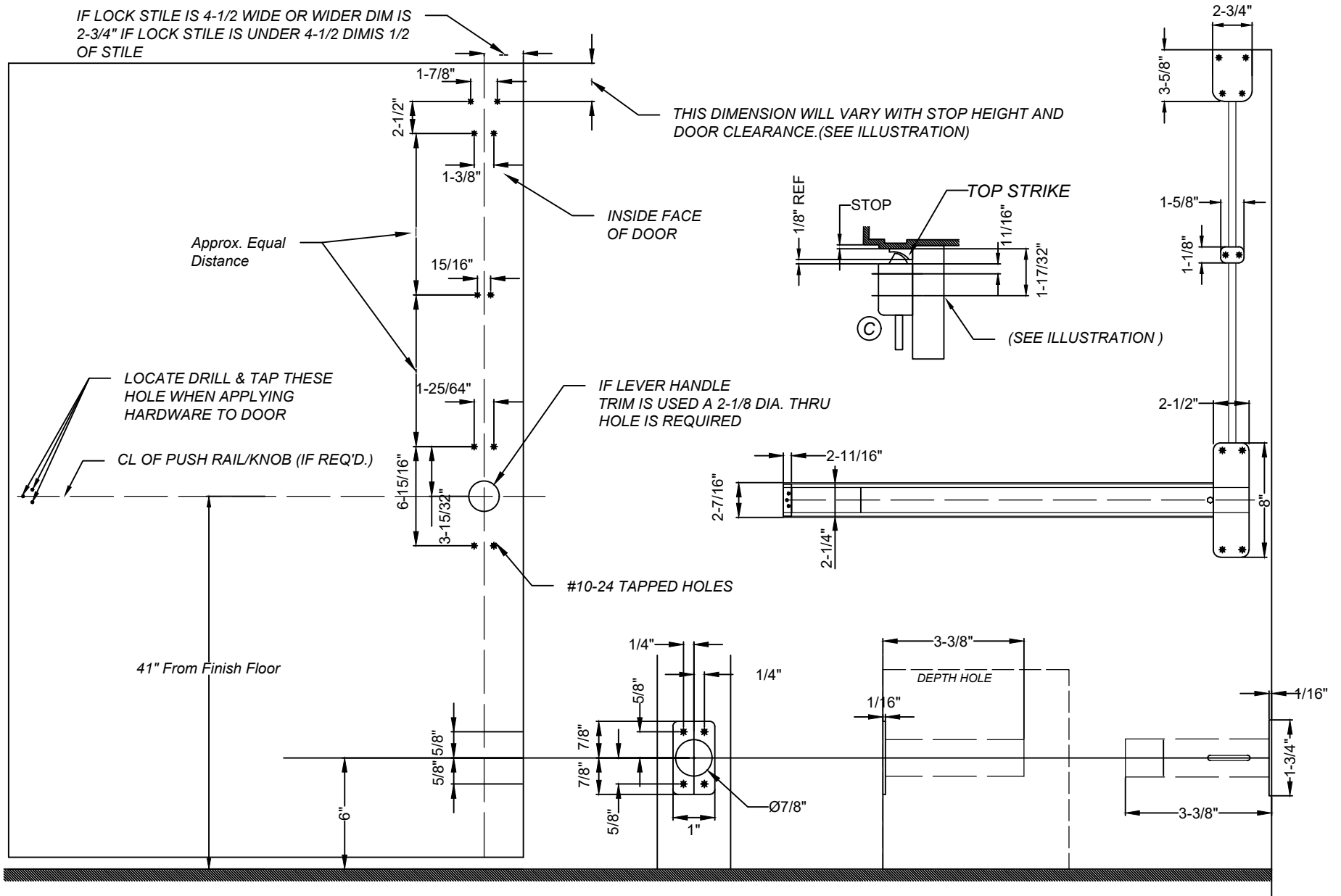


IF LOCK STILE IS 4-1/2 WIDE OR WIDER DIM IS 2-3/4" IF LOCK STILE IS UNDER 4-1/2 DIM IS 1/2 OF STILE



1. TOLERANCE OF ALL DIMENSIONS $\pm 1/64"$.
2. WE RECOMMEND THAT ALL TAPPED HOLES BE DRILLED & TAPPED IN FIELD
3. SEE STRIKE TEMPLATE FOR TOP AND BOTTOM STRIKES.
4. SEE MASTER SHEET FOR AREAS REQUIRING REINFORCEMENTS.
5. SURFACE OF DOOR WHERE EXIT DEVICE IS TO BE APPLIED MUST BE FLUSH.

The illustration and technical description in this cut sheet is current as of the date in version date on the right. Cal-Royal Product reserves the right to, and may, on occasions, make changes and/or improvements in designs and dimensions without prior notice.

	6605 Fiolilla Street City of Commerce CA 90040 USA Tel.# (323) 888-6601 FAX # (323) 888-6699 WEB SITE: CAL-ROYAL.COM Email: sales@cal-royal.com		ITEM NO.	DESCRIPTION :	NOT TO SCALE	UNIT	Prepared By:	DATE	DWG. NO.
	ALBRF7760V	TEMPLATE SURFACE VERTICAL LESS BOTTOM ROD FIRE RATED EXIT DEVICE	PAGE 1 OF 1	PRIMARY DIMENSION SHOWN IN INCHES		BBT / ADG / CVL	08/12/2024	EDT-4133-08/24-1 of 1	
								REV: Ver-01	